



# 1c What does energy storage system mean





## Overview

---

A 1C battery is designed to charge or discharge at a rate equal to its full capacity within one hour. The “C” rating serves as a measure of how quickly the battery can deliver or accept energy. The most typical characteristic of an energy storage system is that it contains an electricity storage medium – batteries. Battery systems can support a wide range of services needed for the transition, from providing frequency response, reserve capacity, black-start capability and other grid services, to storing power in electric vehicles, upgrading mini-grids and renewable.



## 1c What does energy storage system mean

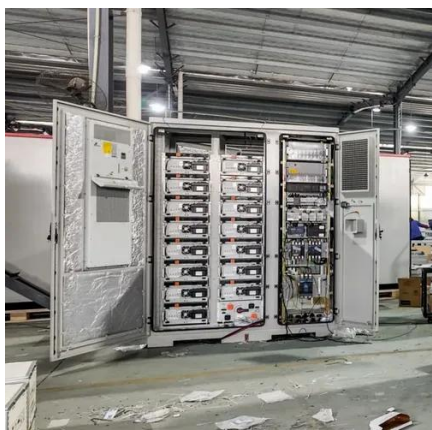


### [Energy storage container charging and discharging rate 1c](#)

What is a Battery Energy Storage System (BESS)?  
By definition, a Battery Energy Storage Systems (BESS) is a type of energy storage solution, a collection of large batteries within a container, that can ...

### [What is Battery C-rate? 2026 Comprehensive Guide](#)

Battery C-rate refers to the rate at which a battery is charged or discharged relative to its maximum capacity. A 1C rate means the battery discharges (or charges) its entire capacity in one hour, while ...



### **The meaning of 1c energy storage**

The capacity of a battery is usually specified as 1C, which means that a fully charged battery with a capacity of 1Ah will deliver 1A for one hour. The same battery discharged at 0.5C ...

### [Battery storage definitions: a glossary of BESS terminology](#)

The process of charging and discharging a battery energy storage system. One cycle is completed when the asset is charged to the allowed maximum and discharged to the allowed minimum.



### Energy Storage Batteries: Why Is It Always 0.5C?

A charging and discharging rate of 1C means that the energy storage battery can discharge all its electricity within one hour; 2C means that the energy storage battery can discharge all its electricity ...



### What's the Difference Between a Battery and an Energy Storage System?

For example, a 1C battery means it can discharge its full capacity in one hour. So, if a battery is rated at 10Ah (amp-hours), a 1C rate equals 10A of current. A 2C rate would mean 20A ...



### **What is a Battery C Rating**

Smaller batteries usually list a 1C rating, also called the one-hour rate. For example, if a battery is labeled 3000mAh at the one-hour rate, its 1C rating is 3000mAh.

### **What does 1c mean in energy storage**



renewable energy: how to store it. Storing fossil fuels like coal or oil until it's time to use them isn't a problem, but storage systems for solar and wind energy are still being developed that would let them ...

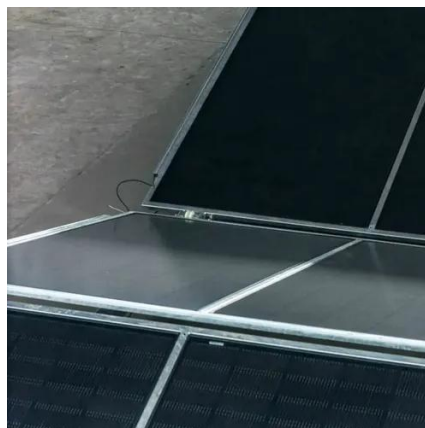


### [Understanding BESS: MW, MWh, and Charging/Discharging Speeds \(1C...](#)

o 1C Rate: At a 1C rate, the battery can be fully charged or discharged in one hour. For a 10 MWh BESS operating at 1C, it can deliver 10 MW of power for one hour or recharge entirely in ...

### **What Is the 1C Battery?**

A 1C battery is designed to charge or discharge at a rate equal to its full capacity within one hour. The "C" rating serves as a measure of how quickly the battery can deliver or accept ...





## Contact Us

---

For catalog requests, pricing, or partnerships, please visit:

<https://www.iwap.com.pl>

Phone: +34 919 456 782

Email: [info@iwap.com.pl](mailto:info@iwap.com.pl)

Scan the QR code to access our WhatsApp.

