



# 295mw photovoltaic panel specifications





## Overview

---

All you need to know about the Sunmodule Plus SW295 Mono solar panel including rating, cost, efficiency, and warranty terms. Fully-automated production lines and seamless monitoring of the process and material ensure the quality that the company sets as its benchmark for its sites worldwide. Plus-Sorting guarantees highest system efficiency. These panels are particularly suitable for a range of applications, from residential to commercial settings, due to their. This high-performance solar panel, with its state-of-the-art design, guarantees impressive energy output. Boasting a capacity of 295 watts, it provides a powerful solution for residential, commercial, and industrial applications. Note: Your Enquiry will be sent directly to Kaneka Corporation. Detailed profile including pictures, certification details and manufacturer PDF . Exclusive linear AXITEC high performance guarantee! 80% 85% 90% Value! 9,54 A 9,67 A 9,74 A 9,83 A 9,94 A 200 W/m2 400 W/m2 600 W/m2 800 W/m2 1000 W/m2 30 840 Technical data are subject to change without prior notice, errors excepted. Need More than 4 Pallets?

Call or Text 646-504-7184 For Greater Savings .



## 295mw photovoltaic panel specifications

---

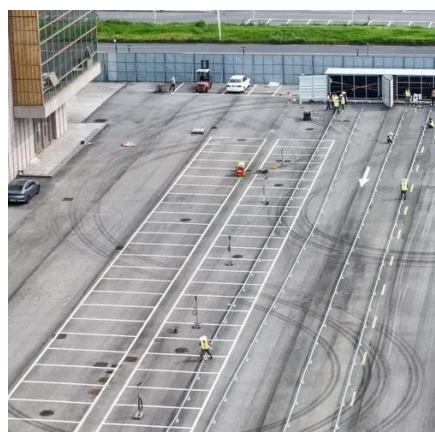


[Kaneka , GRANSOLA\(TM\) 225-295W , Solar Panel Datasheet , ENF ...](#)

Kaneka Corporation Solar Panel Series GRANSOLA(TM) 225-295W. Detailed profile including pictures, certification details and manufacturer PDF.

### S-Energy 295 W Mono Solar panel

\$0.57/watt , S-Energy 295 W Mono Solar Panel , Black Frame , Black Backsheet - BoB , 60 Monocrystalline Cells - 6x10 ( 18.1% efficiency) , Power Tolerance STC +5 W / -0 W , Plug Type: MC4 compatible , PV Wire ...



### Solarworld 295w Datasheet

The Solarworld 295w datasheet provides us with a comprehensive overview of the panel's key specifications, allowing us to understand its capabilities in greater depth.

### SolarWorld Sunmodule Plus SW 280

Fully-automated production lines and seamless monitoring of the process and material ensure the quality that the company sets as its benchmark for its sites worldwide. Plus-Sorting guarantees highest system ...



### [Solar Panel Guide Specification Data Sheet](#)

AXITEC Energy GmbH & Co. KG AXIpremium AC-290-315M/60S AC-295M/60S Also available on the web at [EnergyPal /axitec-energy-gmbh-co-kg-solar-panels/ac-295m-60s](#) 290 - 315 Wp

### [SM-295PC8, S-Energy 295 Watt Solar Panel, 72 Cell](#)

Package our solar panels with an enclosure, mounts, batteries, and an assembly for a turnkey solution! Take the guesswork out of your solar system design - we can engineer, build, and integrate a system to meet ...



### **Comprehensive Guide to 295W Solar Panels**

295W solar panels have emerged as a pivotal solution in the realm of solar energy, providing a harmonious balance between physical size, efficiency, and power output. These panels are particularly ...



### **SWA 295 MONO BLACK**



For over four decades SolarWorld Americas has been creating the highest quality solar cells and panels. Driven by uncompromising standards of quality and reliability, every solar panel we produce demonstrates our ...



### THE MODULE

Black (DD05A.08(II), DD05A.05(II)) IP 67 or IP 68 rated Cables Photovoltaic Technology Cable 4.0mm<sup>2</sup> (0.006 inches<sup>2</sup>), 1000 mm (39.4 inches) Connector MC4 Compatible or Amphenol H4/UTX Fire Type Type 1 or Type 2

### SolarWorld Sunmodule Plus SW295 Mono

All you need to know about the Sunmodule Plus SW295 Mono solar panel including rating, cost, efficiency, and warranty terms.





## Contact Us

---

For catalog requests, pricing, or partnerships, please visit:

<https://www.iwap.com.pl>

Phone: +34 919 456 782

Email: [info@iwap.com.pl](mailto:info@iwap.com.pl)

Scan the QR code to access our WhatsApp.

