



310wp photovoltaic panel





310wp photovoltaic panel



[AXITEC 310W Solar Panel 120 cell](#)
[AXIblackpremium HC 310M](#)

AXITEC Solar Panels are high-performance premium European solar modules that offer great power output in various weather conditions and under low irradiance. They achieve the highest ...

[Ofca Power Technology , OFC 310Wp , Solar Panel](#)

...

Ofca Power Technology Pvt Ltd Solar Panel Series OFC 310Wp. Detailed profile including pictures, certification details and manufacturer PDF.



Silfab Solar SLA-M 310 310W Solar Panel

Premium made in North America 310 watt all-black solar panel for grid-tie solar systems. Contact us for discount price, complete systems and reviews.

[Astronergy CHSM6612P-310 > 310 Watt Solar Panel](#)

Astronergy CHSM6612P-310 solar panels are a reliable and cost-effective 72-cell panel suitable for residential, commercial and utility-scale PV systems. Astronergy produces cells at their state-of-the ...



[S-Energy 310 Watt Solar Panel - SS310M-10T](#)

S-Energy 310 Watt Solar Panel - SS310M-10T Add To Quote Categories: Solar Panels, Panels by Wattage, 230-450 Watt Solar Panels Description



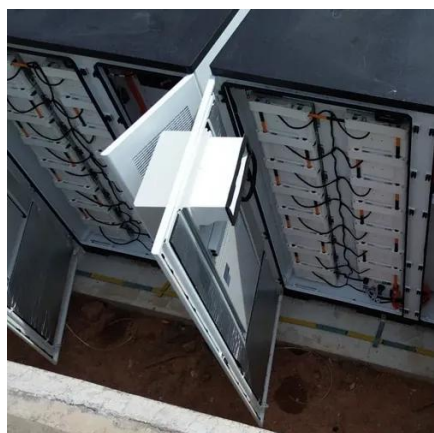
[Panasonic Solar Panel \(Module\), 310Wp, 72 cell](#)

Panasonic Solar Panel (Module), 310Wp, 72 cell , Monocrystalline , 72 cells , Designed for 600V and 1000V applications , Compatible with MC4 connectors , Module Efficiency: 15.68% / Condition: New , ...



[310 Watt Solar Panels: Complete 2025 Guide & Best Models](#)

Complete guide to 310W solar panels including specifications, performance, top brands, and buying advice. Compare Mission Solar, REC, Longi & more.



[Access Solar ASL-310Wp Solar Panel Specifications](#)



The ASL-310Wp solar panels have a rated output of 310 Wp and an impressive efficiency of 16.01 %, making them an excellent choice for homeowners looking to harness the power of the sun and ...

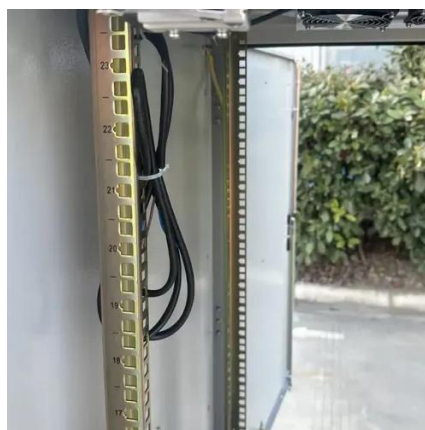


S-Energy 310 W Mono Solar Panel

S-Energy 310 W Mono Solar Panel- SN310M-10T/15T, \$0.43/watt, Black Frame, Black Backsheet - BoB , 60 Cells - 6x10 Matrix 19.22% efficiency, Power Tolerance STC +5 W, Plug MC4 compatible, 20A ...

210mm Cells 310Wp

High-efficiency 310Wp solar panel with 210mm cells. Ideal for rooftop solar projects requiring stable power output and competitive cost.





Contact Us

For catalog requests, pricing, or partnerships, please visit:

<https://www.iwap.com.pl>

Phone: +34 919 456 782

Email: info@iwap.com.pl

Scan the QR code to access our WhatsApp.

