



5G base station electricity cost burden





5G base station electricity cost burden



[Economic research on 5G base station peak regulation](#)

In view of the above problems, combined with Communication load characteristics of 5G communication base station, this paper created a schedulable capacity model of 5G communication ...

[Energy Efficiency for 5G and Beyond 5G: Potential, Limitations, and](#)

Simulation results demonstrated the effectiveness of the proposed technology in reducing energy consumption and improving energy efficiency in 5G base station networks.



[5G Infrastructure Costs: What Telcos Are Paying . PatentPC](#)

While 5G promises faster speeds and lower latency, it comes at the cost of higher energy consumption. Estimates suggest that 5G networks require 3 to 4 times more energy than their 4G counterparts.

[Communication Base Station Cost Optimization: Navigating the 5G Era](#)

With operators spending \$180 billion annually on network infrastructure, how can we reconcile the 63% surge in energy consumption per 5G site with shrinking profit margins?

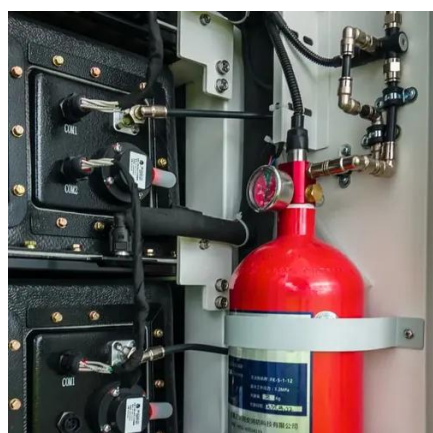


[Energy Consumption of 5G, Wireless Systems and the Digital Ecosystem](#)

Here we develop a large-scale data-driven framework to quantitatively assess the carbon emissions of 5G mobile networks in China, where over 60% of the global 5G base stations are implemented.

[Power consumption analysis of access network in 5G mobile ...](#)

Energy consumption growth of the fifth-generation (5G) mobile network infrastructure can be significant due to the increased traffic demand for a massive number of end-users with increasing ...



[Energy Consumption of 5G, Wireless Systems and the Digital Ecosystem](#)

The base station's average energy consumption during a certain time period has been estimated. A range of optimization approaches, namely PSO, ABC, and GA, have been employed to ...

Massive 5G electricity costs are in focus ahead of the global build-out



Unfortunately, most of these tower base stations were not conceived with energy efficiency in mind. They operate around a PUE of 1.5 (power in/power of the telco (IT) load), meaning that ...



5G Base Stations: The Energy Consumption Challenge

Amongst these challenges, the most notable one is the energy consumption of a 5G base station due to the implementation of the massive MIMO technology and the level of network ...

Dynamical modelling and cost optimization of a 5G base station for

The base station's average energy consumption during a certain time period has been estimated. A range of optimization approaches, namely PSO, ABC, and GA, have been employed to ...



Why does 5g base station consume so much power and how to ...

One advantage of using SUV deployment base stations in the early stages of China's 5G network construction is that. 5G base stations can be directly installed on the battlefield of 4G base ...



Contact Us

For catalog requests, pricing, or partnerships, please visit:

<https://www.iwap.com.pl>

Phone: +34 919 456 782

Email: info@iwap.com.pl

Scan the QR code to access our WhatsApp.

