



5g base station backup battery is in the site cabinet





5g base station backup battery is in the site cabinet



[5G Base Station Power Supply with Battery & DC Distribution](#)

Reliable 5G base station power supply with battery backup and DC distribution. Ensures continuous, efficient power for critical telecom infrastructure.

[Telecom Battery Backup Systems. Backup Power For Telecom ...](#)

Since 5G uses a larger array antenna and higher bandwidth, the base station will process massive data, and the energy consumption is significantly higher than the original 3G and 4G base stations.



[5G Base Station Lithium Battery: Capacity and Discharge Rate ...](#)

EverExceed's high-rate discharge LiFePO4 batteries are engineered to handle these demanding conditions, ensuring stable and efficient power delivery to 5G infrastructure.



[An optimal dispatch strategy for 5G base stations equipped with ...](#)

Therefore, this paper proposes an optimal dispatch strategy for 5G BSs equipped with BSCs. Firstly, a joint dispatch framework is established, where the idle capacity of batteries in 5G BS ...



[WHY SHOULD A 5G BASE STATION HAVE A BACKUP BATTERY?](#)

China Tower and Huawei conducted joint pilot verification in 2018 and found that the 5G Power solution could support effective 5G site deployment without changing the grid, power distribution or cabinets.



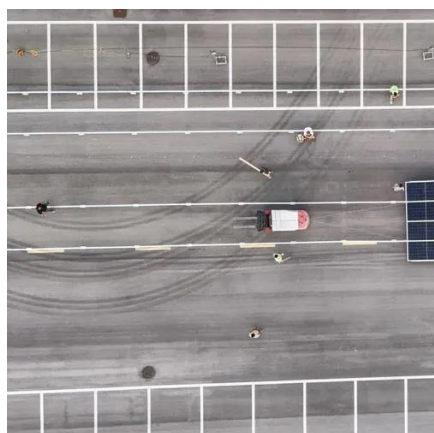
[Sizing battery backup runtime for rural bad-grid 5G with Outdoor](#)

You need to size your battery backup carefully for rural 5G sites with unstable grid power. Using the right outdoor battery cabinet ensures your telecom equipment stays protected even during ...



[TELECOM BASE STATION BATTERY BACKUP SYSTEM ...](#)

The base station power cabinet is a key equipment ensuring continuous power supply to base station devices, with LLVD (Load Low Voltage Disconnect) and BLVD (Battery Low Voltage Disconnect) ...



[Optimizing Network Reliability with Base Station Energy Storage](#)



A site battery cabinet is a crucial component of the base station energy storage infrastructure. It houses batteries and supporting electronics in a secure, weather-resistant ...



[Battery Cabinet vs Rackmount - Which is More Space-Efficient for 5G?](#)

Modern rackmount batteries achieve 180-220Wh/kg energy density through prismatic cell designs - that's 40% improvement over cabinet-style VRLA systems. But here's the catch: thermal ...

[Complete Guide to 5G Base Station Construction . Key Steps, ...](#)

Explore how 5G base stations are built--from site planning and cabinet installation to power systems and cooling solutions. Learn the essential components, technologies, and challenges ...





Contact Us

For catalog requests, pricing, or partnerships, please visit:

<https://www.iwap.com.pl>

Phone: +34 919 456 782

Email: info@iwap.com.pl

Scan the QR code to access our WhatsApp.

