

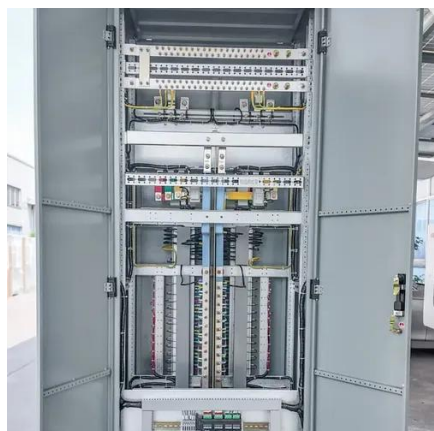


630 solar panel size





630 solar panel size



[N Type 620W 630W 635W All Black Double Glass ...](#)

Sunpal's TOPCon BiMAX5N Bifacial Ultra Black Dual Glass solar ...

[Understanding the Photovoltaic 630 Panel: Size, Applications, and](#)

Photovoltaic 630 Panel Dimensions and Technical Specifications The photovoltaic 630 panel typically measures approximately 2.2 meters in length and 1.1 meters in width, with a total surface area of 2.4 ...



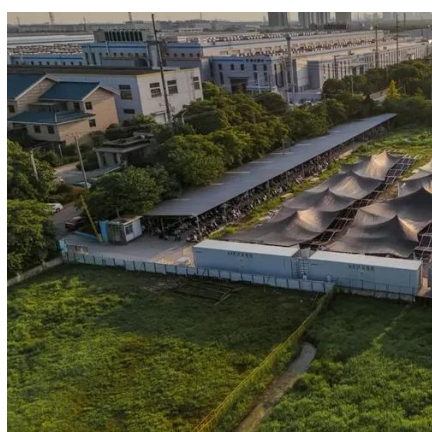
[The Ultimate Guide to Solar Panel Size, Weight & Wattage \(2025\)](#)

Find the exact solar panel size & weight in our 2025 guide. Our complete chart compares models by ft/cm and lbs/kg to help you plan your installation.



[N Type 620W 630W 635W All Black Double Glass Solar Panel](#)

Sunpal's TOPCon BiMAX5N Bifacial Ultra Black Dual Glass solar modules utilize 182mm cells to achieve power output ranging from 410W to 635W, ensuring sufficient energy production for your ...



[Standard Solar Panel Sizes And Wattages \(100W-500W Dimensions\)](#)

That's a 63x41.5 solar panel. This form is a bit shorter but wider. This is the typical classification of solar panel sizes (based on the solar cell size). It's a bit theoretical and quite useless for most calculations. ...

[Solar Panel Size Guide , Best Panel Size for Your Roof](#)

Learn how to choose the ideal solar panel size for your home. Get expert tips, standard dimensions, and a size chart to simplify your solar decisions.



[Understanding 630W Photovoltaic Panel Dimensions for Optimal Solar](#)

As you plan your solar array, remember that 630W panel dimensions represent more than just physical measurements - they're the blueprint for energy independence.



[Solar Panel Size & Dimensions Guide 2025 , Complete Specs](#)



In this comprehensive guide, you'll learn everything you need to know about solar panel sizing, from standard dimensions to weight considerations, helping you determine the perfect solar ...



SIL-620/630/640 XL BIFACIAL

Silfab Utility NTC bifacial panels utilize next-generation N-type solar cells and have a nearly 23 percent efficiency rating, improved shade tolerance and low-light performance, made-to-order cables and ...

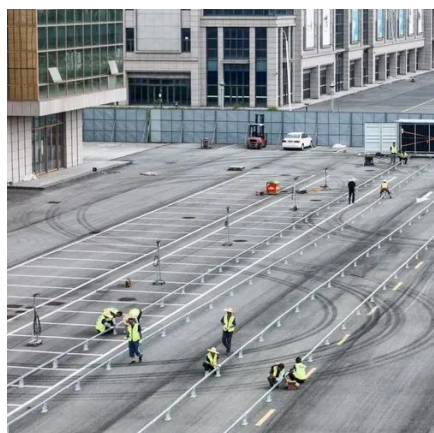
[Silfab SIL-630 XL Bifacial Solar Panel , 630W](#)

High-efficiency 630W panel with N-type cell technology for utility-scale projects. Made in USA with 25-year warranty.



[Solar Panel Half-cut N-Type TOPCon 630 Wp](#)

Product Documentation Certifications & Qualifications Questions about this product?





Contact Us

For catalog requests, pricing, or partnerships, please visit:

<https://www.iwap.com.pl>

Phone: +34 919 456 782

Email: info@iwap.com.pl

Scan the QR code to access our WhatsApp.

