



660W solar panel dimensions and specifications





660W solar panel dimensions and specifications



660W Solar panels , xisisolar

Cell Type : P type Mono-crystalline Frame
technology: Aluminum, silver anodized Front glass
thickness :2.0mm weight: 38.2kg Solar Cells:
132cells in series (6 x 22) Weight of packing unit
(for 40'HQ container) 1230 kg ...

AE_ME-132BD_640W-660W_Ver24.5.1

The specifications and characteristics contained in this datasheet may deviate slightly from our actual products due to the product developments and uncertainty of measurement devices.



[660W/670W/680W All Black Monofacial PERC PV Module For ...](#)

With an efficiency of up to 22.06 % and an output of 655W to 685W, this SP685M-66H all-black solar module ensures maximum energy generation, making it ideal for residential and commercial installations.

640-660W

All specifications are in accordance with standard EN 50380. Color differences of the modules relative to the figures as well as discolorations of/in the modules which do not impair their proper functioning are possible ...



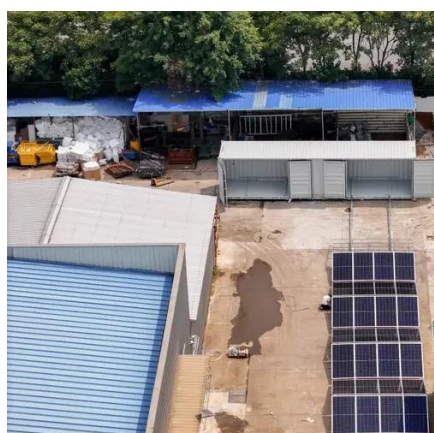
[Solar Panel Bifacial Half-cut Monocrystalline 660 Wp](#)

SOLAR PANEL 660 WATTS , TRINA SOLAR , Bifacial Half-cut , Monocrystalline , 132 Cells PV Module , Power tolerance 0/+5W , L 2384 mm, W 1303 mm, D 33 mm , 38.30 kg , Material Warranty 12 years , Linear Power ...



[Sunshine 660W PV Panel Size: Complete Guide for Solar System](#)

The Sunshine 660W panel measures 2279×1134×35mm, packing 21.3% efficiency into a frame that's actually 15% smaller than older 550W models. Let's break that down:



Ja solar 660w datasheet

The JA Solar 660W datasheet provides detailed specifications and technical information for their high-efficiency solar panels, designed to maximize power output and performance for solar energy systems.

[660 watt solar panel for sale , Buy online for home, boat and RV](#)



660-watt panels are compact yet powerful. Their standard dimensions are: Width: approximately 2 meters (6.56 feet). Height: approximately 1 meter (3.28 feet). Compared to other models (e.g., 600 or 640 ...



Trina Solar TSM-660DEG21C.20

The Trina Solar TSM-DEG21C.20-660 is a high-power bifacial dual-glass module using monocrystalline high-density-interconnect cells, delivering 660 Wp with a module efficiency of 21.2%; it measures 2384 × 1303 × ...

Photovoltaic Panel 660W: Key Dimensions and Industry Insights

Most 660W photovoltaic panels measure approximately 1,640-2,384 mm in length and 992-1,303 mm in width, with thickness ranging from 35-40mm. These dimensions vary across manufacturers - think of it like ...



660W/670W/680W All Black Monofacial PERC PV Module ...

With an efficiency of up to 22.06 % and an output of 655W to 685W, ...





Contact Us

For catalog requests, pricing, or partnerships, please visit:

<https://www.iwap.com.pl>

Phone: +34 919 456 782

Email: info@iwap.com.pl

Scan the QR code to access our WhatsApp.

