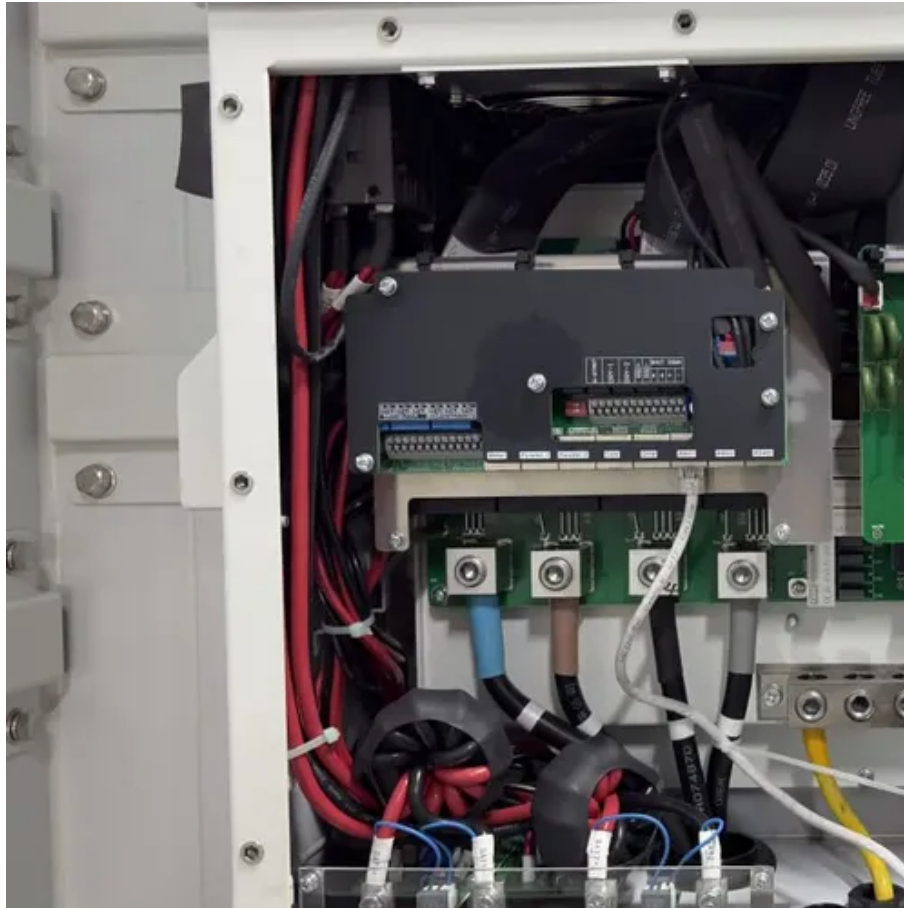




72 grid photovoltaic panel size





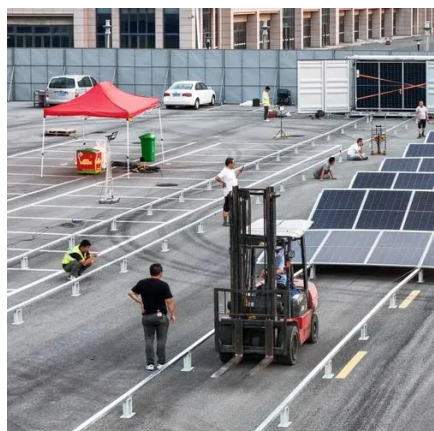
Overview

The average 72-cell solar panel size measures 3.42 feet and is laid out as a 6 x 12 grid, making them almost a foot taller than the 60-cell standard size panels. 25 feet) and produces 350-450 watts. 5. 72 cell PV modules are primarily used for large commercial, ground mounted and carport solar panel systems. Call (877) 297-0014 for wholesale price and availability. What's the difference between a 60-cell and 72-cell solar panel?

Popular for commercial and ground-mounted installations, 72-cell. The size of solar panels with the same cell count varies slightly, depending on the brand and model. However, panels with cell counts of 96, 120, and 144 may have different sizes. This size offers the best balance between power output, handling ease, and fitting standard roof dimensions.



72 grid photovoltaic panel size



Solar Panel Size: 2026 Detailed Guide

Commercial solar panels are designed for large-scale energy production for factories, solar parks, institutions, and other businesses. Typically, a commercial solar panel is 6.5 x 3.2 feet ...

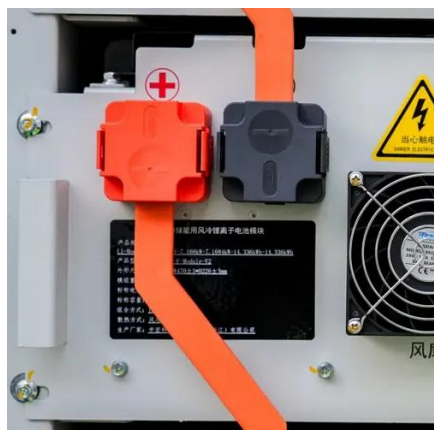
[Solar Panel Dimensions and Sizes: Complete Guide](#)

The average 72-cell solar panel size measures 3.25 feet by 6.42 feet and is laid out as a 6 x 12 grid, making them almost a foot taller than the 60-cell standard size panels.



Complete Guide to Solar Panel Size

72-cell panels are bigger, measuring around 6.5 feet by 3 feet, weigh about 50 pounds, and are typically considered commercial solar panels. An average solar panel system requires between 15 to 19 solar ...



[Standard Solar Panel Sizes And Wattages \(100W-500W Dimensions\)](#)

As we can see, those 60-cell, 72-cell, and 96-cell solar panel dimensions are a bit theoretical. These are the practical solar panel dimensions by wattage from solar panels that are actually sold on the ...



51.2V 150AH, 7.68KWH

72 Cell Solar Panels

72 cell PV modules are primarily used for large commercial, ground mounted and carport solar panel systems. Call (877) 297-0014 for wholesale price and availability. What's the difference between a 60 ...



What Are the Common Solar Panel Sizes?

The size of solar panels with the same cell count varies slightly, depending on the brand and model. Still, most 60-cell solar panels have a size of 39" X 66" and most 72-cell solar panels ...



[standard solar photovoltaic panel sizes explained](#)

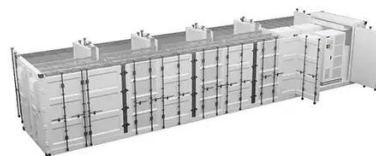
Knowing if you are dealing with a 60-cell or 72-cell system immediately tells you the expected physical solar photovoltaic panel size, regardless of the manufacturer. Does a bigger solar ...



Solar Photovoltaic Panel Sizing Guide



A solar cell is a 156 mm x 156 mm square. 60 panels are arranged in a 6 x 10 grid. 72 panels are arranged in a 6 x 12 grid, and their height is about 3 to 4 centimeters.



[60-Cell VS 72-Cell Solar Panels: Complete Comparison Guide](#)

Standard 60-cell panel construction arranges cells in a 6x10 grid pattern (six cells across, ten cells vertically). The 72-cell configuration maintains the same six-cell width but extends the height with two ...

[Solar Panel Size & Dimensions Guide 2025 . Complete Specs](#)

Complete guide to solar panel sizes and dimensions. Compare 60-cell vs 72-cell panels, weights, roof space requirements, and installation specs for 2025.





Contact Us

For catalog requests, pricing, or partnerships, please visit:

<https://www.iwap.com.pl>

Phone: +34 919 456 782

Email: info@iwap.com.pl

Scan the QR code to access our WhatsApp.

