



AC DC 220 to 380 inverter





Overview

A 220V DC to 380V AC power inverter is a critical device that converts direct current (DC) from sources like batteries or solar panels into alternating current (AC) suitable for powering industrial equipment, three-phase motors, and commercial applications. They are widely used, including in automobiles, power supplies, and electronic devices. Especially in specific application scenarios, such as when it is necessary to convert a 220V single-phase power supply to a 380V. The SDT series single-phase to three-phase converter, adopted AC-DC-AC circuit structure and using SPWM modulation control technology, which can convert ordinary single-phase power to industrial three-phase power. After through SDT series single-phase to three phase converter power.



AC DC 220 to 380 inverter

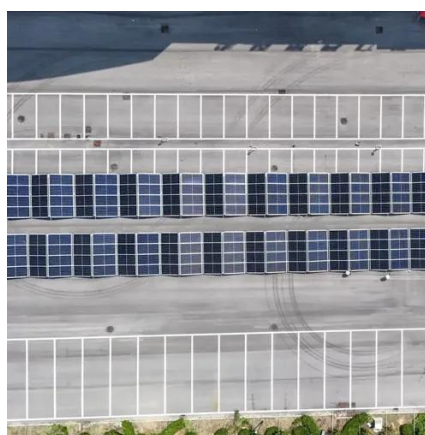


Ac dc voltage converter 220 to 380

Purchase hybrid, efficient, and high-low frequency ac dc voltage converter 220 to 380 at Alibaba for residential and commercial uses. These ac dc voltage converter 220 to 380 have solar-driven ...

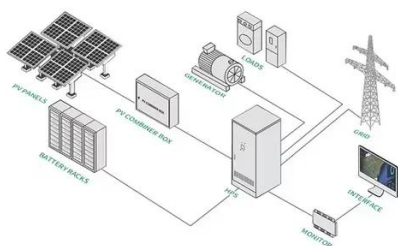
[5 hp \(3.7 kW\) VFD, 220V 1-Phase to 380V 3-Phase Inverter](#)

5 hp single phase to 3 phase VFD provides 220V 1-phase input and 380V 3-phase output, well suits to control the speed of industrial motor, lift/elevator motor.



[2 hp VFD, 1-Phase 220V to 3-Phase 380V VFD](#)

2 hp (1.5 kW) VFD at low cost, with 220 volt single phase input, 380 volt, 415 volt three phase output. This variable frequency converter controlled by V/F, sensorless vector control mode.



[SANDI SDT-40KW phase converter 220VAC to 380V 3 phase output](#)

The Sandi SDT series three-phase to single-phase converter, adopted AC-DC-AC circuit structure and using SVPWM modulation control technology, which can convert ordinary single-phase power to ...



220 V to 380 V Inverter

Below is a detailed breakdown of the main types of inverters capable of supporting or enabling 220V to 380V conversion. Designed to synchronize with the utility power grid, these inverters convert DC ...



[220v Inverter VFD Inverter 750W 220V To 380V Converter](#)

This VFD inverter is your solution! This 750W converter takes single-phase 220V input and gives you three-phase 380V output - perfect for powering industrial equipment in workshops or home garages ...



[220-240V to 380-440V AC Power Phase Converter](#)

The SDT series single-phase to three-phase converter, adopted AC-DC-AC circuit structure and using SPWM modulation control technology, which can convert ordinary single-phase power to industrial ...



220v dc to 380v ac power inverter



Below is a comprehensive breakdown of the most common types of 220V DC to 380V AC inverters, including their working principles, advantages, limitations, and ideal applications.



220 VDC to 380 VAC Power Inverter

ND series 220 VDC to 380 VAC Power Inverter.
Power Range: 1~200KVA. DC input voltage: 220VDC. AC output voltage: 380VAC,3 phases.
Features: Advance IGBT inverted technology. CPU
...

[The Application and Selection Guide of 220V Single Phase to 380V 3](#)

Through reasonable selection and use, the 220V single phase to 380V 3 phase converter will provide stable and reliable power support for various application scenarios.





Contact Us

For catalog requests, pricing, or partnerships, please visit:

<https://www.iwap.com.pl>

Phone: +34 919 456 782

Email: info@iwap.com.pl

Scan the QR code to access our WhatsApp.

