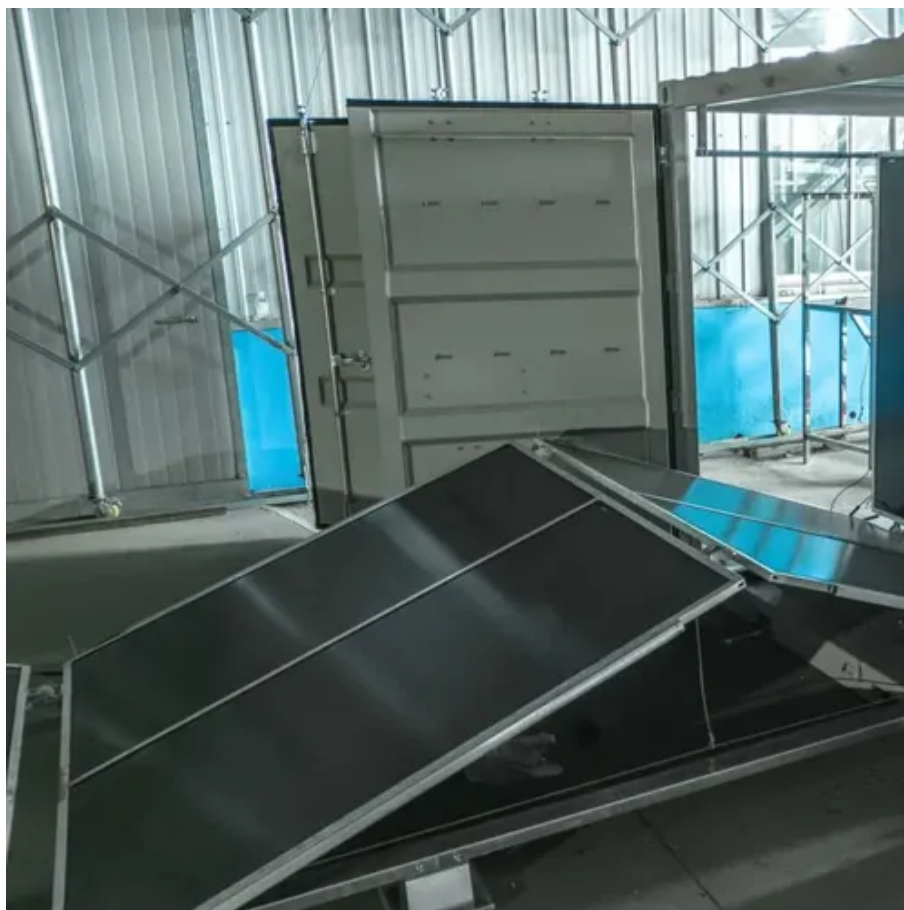




Advantages and disadvantages of constant power outdoor power supply





Overview

The advantages of constant voltage and current power supply include flexibility, stability, protection function, adjustability, and high efficiency, while the disadvantages mainly include high cost, large volume, thermal management requirements, and response time. Flexibility: A. The ability to operate in multiple modes—constant voltage (CV), constant current (CC), and constant power (CP)—enhances their versatility for varied applications ranging from microprocessor powering to photovoltaic testing. These terms describe how a power source supplies energy to a load, but they serve distinct purposes in different applications. Direct Drive (Using Constant Current Power Supply) How It Works In direct drive. Electrical loads often change during operation, which can lead to instability if the power supply can't keep up. It's designed to handle varying conditions without affecting performance. A. What are the advantages and disadvantages of switching power supplies?

Switching power supplies feature higher efficiencies, lighter weight, longer hold up times, and the ability to handle wider input voltage ranges.



Advantages and disadvantages of constant power outdoor power sup



[Advantages and Disadvantages of Plug-in Outdoor Power Supply](#)

Jul 6, 2024 · The advantages of constant voltage and current power supply include flexibility, stability, protection function, adjustability, and high efficiency, while the disadvantages mainly

[Advantages and Disadvantages of Constant Voltage vs Constant ...](#)

Both constant voltage and constant current LED drivers offer unique advantages and disadvantages. Understanding these can aid in making an informed decision that aligns with your LED project's ...



[Understanding Constant Current and Constant Voltage Sources](#)

These terms describe how a power source supplies energy to a load, but they serve distinct purposes in different applications. In this article, we will explore the fundamentals, ...



[ADVANTAGES AND DISADVANTAGES OF CONSTANT VOLTAGE ...](#)

Faced with a variety of charging interfaces, voltage standards, and power output options, understanding the advantages and disadvantages of various outdoor charging methods --such as solar charging, ...



[Benefits of Constant Voltage, Constant Current, and Constant Power](#)

The phrase "constant power voltage and current ranges" generally refers to the operational characteristics of DC power supplies that maintain a constant power output while operating within ...



[Power Supply Manufacturer , LED Driver & Adapter Supplier - ...](#)

Constant power supplies offer several operational benefits. They help devices maintain consistent performance even when load conditions fluctuate. By delivering controlled power, they ...



[Common LED Driving Methods Explained , Pros and Cons](#)

Both constant voltage (C.V.) and constant current (C.C.) power supplies can be used with this approach. Advantages Low system cost Improved current stability compared to direct drive ...



[Outdoor Constant Current Power Supply Design: Key Strategies for](#)



Summary: Explore practical solutions for outdoor constant current power supply design. Learn how to balance durability, efficiency, and cost in demanding environments - from solar-powered streetlights ...



[Understanding Outdoor Power Stations: All You Need to Know](#)

Learn all about outdoor power stations, their working principle, charging methods, and application scenarios. Get the complete lowdown in one article from Topwell Power.



Contact Us

For catalog requests, pricing, or partnerships, please visit:

<https://www.iwap.com.pl>

Phone: +34 919 456 782

Email: info@iwap.com.pl

Scan the QR code to access our WhatsApp.

