



Angle of installation of photovoltaic panels in coastal areas





Overview

Because the sun's path changes throughout the year, you can fine-tune tilt:
Summer Tilt: Latitude - 10° to 15° (flatter to catch high sun). Year-Round Fixed Tilt: Stick with latitude if adjustments aren't practical. When it comes to installing solar panels, angle and orientation are just as important as the panels themselves. A correctly tilted system can improve. East-West Orientations Offer Strategic Value: While producing 75-85% of south-facing output, east and west-facing panels can provide superior financial returns by aligning with time-of-use electricity rates and matching typical household consumption patterns. Latitude-Based Angle Calculation. Our solar panel angle calculator takes the guesswork out of panel positioning, suggesting panel tilt angles based on your location's latitude and your willingness to reposition based on the sun's seasonal dance across the sky. This averages out the sun's position over 365 days.



Angle of installation of photovoltaic panels in coastal areas

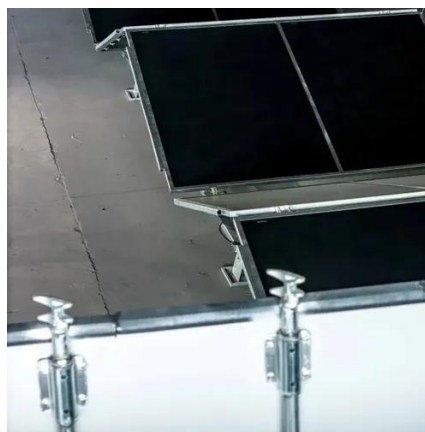


Solar Panel Angle Calculator

Our solar panel angle calculator takes the guesswork out of panel positioning, suggesting panel tilt angles based on your location's latitude and your willingness to reposition based on the sun's ...

[Best Roof Angle for Solar Panels: Optimize Tilt for Maximum Energy](#)

Panels oriented due south with optimal tilt yield the highest annual energy. East- or west-facing arrays shift production toward mornings or afternoons and may benefit from tilt adjustments to ...



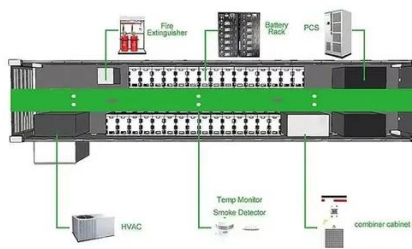
[Solar Panel Best Angle , Tilt & Orientation Guide 2025](#)

Find the best solar panel angle for your location. Learn tilt formulas, seasonal adjustments, and tips to maximize energy efficiency in 2025.



[The Best Angle for Solar Panel Installation](#)

In general, solar panels should be installed so the sunlight hits them at as close to a perpendicular 90-degree angle for as long as possible during the day. To achieve that goal, most ...



[Solar Panel Angle: Definition, and How to Calculate](#)

Panels typically need to face true south for those living in the northern hemisphere and true north for those in the southern hemisphere. For panels to generate maximum energy output, ...

[How to Determine the Best Solar Panel Angle by Location: A Step-by ...](#)

Determining the ideal solar panel angle by location for photovoltaic systems is crucial for maximizing energy generation throughout the year. A commonly used formula suggests adjusting the ...



[Best Angle for Solar Panel Installation: Complete Guide 2025](#)

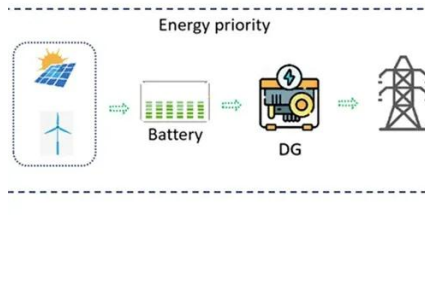
Northern Hemisphere: The best direction for solar panels is true south. This ensures panels face the sun most of the day. Southern Hemisphere: Panels should face true north. East or West Facing Panels: ...



[Solar Panel Direction & Orientation: 2025 Complete Guide](#)



Discover the optimal direction and angle for solar panels to maximize energy output. Complete guide with calculations, tools, and location-specific recommendations for 2025.



[Solar Panel Angle & Tilt Calculator \(2026 Guide\) . Roof Pitch Chart](#)

Since the sun is lower in the winter and higher in the summer, the "perfect" angle changes daily. For a fixed system (95% of residential installs), the Golden Rule is to tilt your panels at an angle equal to ...



[What is the Best Angle for Solar Panels? Maximizing ...](#)

The best angle for solar panels is typically equal to the latitude of your location. Click here to learn how to maximize solar panel efficiency.





Contact Us

For catalog requests, pricing, or partnerships, please visit:

<https://www.iwap.com.pl>

Phone: +34 919 456 782

Email: info@iwap.com.pl

Scan the QR code to access our WhatsApp.

