



Angle steel photovoltaic support construction





Overview

That's why unequal angle steel has become a backbone of photovoltaic (PV) support systems. With one leg longer than the other, this steel shape offers a unique mix of strength and flexibility, perfect for withstanding wind loads while keeping installation costs in check. But making the most of it. These systems — whose importance is often overshadowed by the solar panels they support — are critical to making sure panels placed on rooftops remain stable, functional, and long-lasting. The constant rise in the price of electric energy together with the decrease in the prices of the elements that comprise a photovoltaic installation is generating a direct increase in the. Steel profiles and pipes are fundamental to the construction and functionality of solar panel installations, particularly in the photovoltaic (PV) solar industry. Their strength, durability, and versatility make them essential for supporting PV modules and ensuring the longevity of solar energy.



Angle steel photovoltaic support construction

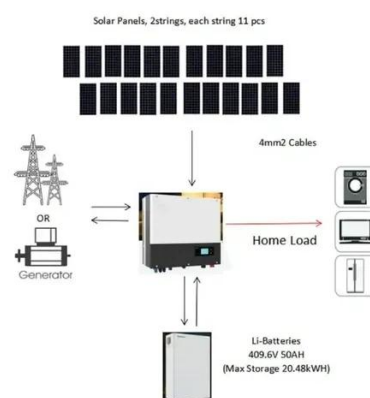


[Design and Implementation of PV Mount Systems](#)

This system serves as the structure that supports photovoltaic modules and directly impacts the stability, safety, and power generation efficiency of the photovoltaic power station.

[Steel Structures for Photovoltaic: Roof-Only Applications](#)

Steel structures in photovoltaic systems serve as the backbone for rooftop solar installations. They are cost-effective and durable, and can function optimally with minimal ...



[Structures and support profiles for photovoltaic modules](#)

Circutor offers a complete range of configurable support structures for any type of installation and roof. The pre-assembled triangle is the main element to create the supports with overhang or flat roof. It is ...



[Steel Profiles and Pipes in the PV Solar Industry: A Detailed Analysis](#)

Steel profiles and pipes are fundamental to the construction and functionality of solar panel installations, particularly in the photovoltaic (PV) solar industry.



- ✓ LIQUID/AIR COOLING
- ✓ INTELLIGENT INTEGRATION
- ✓ PROTECTION IP54/IP55
- ✓ BATTERY /6000 CYCLES

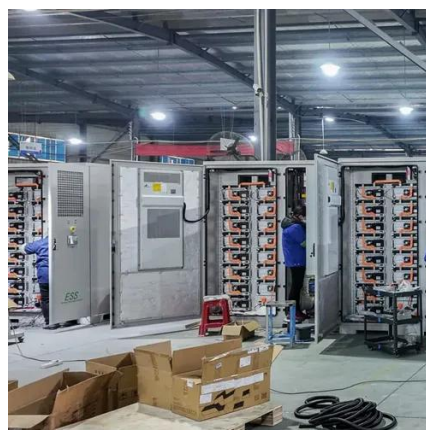


Which steel structural profiles are most suitable for solar energy ...

Solar-Energy-Frame-Profile steel structural profiles
What is C profile ? C-section profiles are frequently preferred in solar panel supports due to their lightness and load-bearing capacity. ...

[NOKSEL , Steel Profiles for Solar Structures](#)

Our high-quality steel profiles provide excellent support for steel roof structures, creating a solid foundation for solar panel installation. Whether flat or sloping grounds our profiles for solar panels are ...



[Unequal Angle Steel: PV Support Wind Load Design & amp Spacing](#)

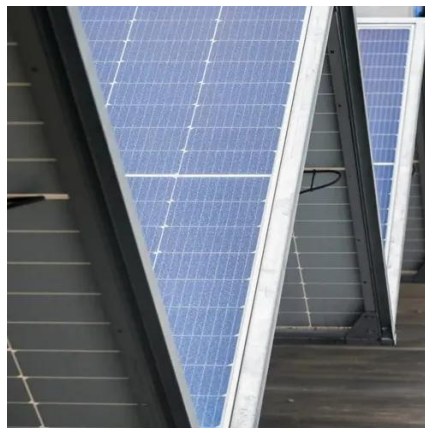
That's why unequal angle steel has become a backbone of photovoltaic (PV) support systems. With one leg longer than the other, this steel shape offers a unique mix of strength and ...



[10 Popular Steel Structure Designs for PV Panel Projects](#)



Compare 10 steel structure designs for PV panel projects. Find the best Steel Structure for PV Panel based on cost, durability, and site needs.



[Design and Analysis of Steel Support Structures Used in Photovoltaic](#)

This paper contributes to the current issues and challenges faced by the support structure designer for the ground-mounted solar PV module mounting structure (MMS).

[Photovoltaic panel steel frame construction drawings](#)

In the photovoltaic (PV) solar power plant projects, PV solar panel (SP) support structure is one of the main elements and limited numerical studies exist on PVSP ground mounting steel frames to be a ...





Contact Us

For catalog requests, pricing, or partnerships, please visit:

<https://www.iwap.com.pl>

Phone: +34 919 456 782

Email: info@iwap.com.pl

Scan the QR code to access our WhatsApp.

