



Are the batteries in the solar container battery cabinet connected in parallel or in series





Overview

In conclusion, solar battery cabinets can be connected in parallel, offering increased energy storage capacity, redundancy, and load - balancing benefits. However, it is essential to consider the technical requirements, challenges, and safety aspects before making the. The decision to wire batteries in series or parallel, or a combination of both, significantly impacts the efficiency and longevity of the system. This comprehensive guide explores the intricacies of these options. You're not just connecting batteries—you're deciding how power flows, how long it lasts, and whether your gear stays running when it matters. These configurations aren't just for engineers. Choosing the right approach impacts system efficiency, safety, and performance. GSL Energy, as a. When setting up a battery bank for solar power, RVs, marine applications, or off-grid systems, understanding the difference between series and parallel connections is crucial. For lithium batteries, visit [Lithium Battery Balancing](#).



Are the batteries in the solar container battery cabinet connected in parallel?



[Series vs Parallel Battery Connection Explained: Which Setup Works ...](#)

From the aforementioned facts, we can conclude that we connect batteries in series or parallel based on our demand. If we require a high voltage, then we should connect the batteries in ...

[Series, Parallel, and Series-Parallel Connections of Batteries](#)

Some components are connected in series, while others are connected in parallel, resulting in a complex circuit of interconnected devices and batteries. For example, you can combine two pairs of batteries ...



[Series Vs Parallel Battery Connections , GSL Energy Battery](#)

Batteries can be connected in series to increase voltage or in parallel to increase capacity. Choosing the right approach impacts system efficiency, safety, and performance.

[Can solar battery cabinets be connected in parallel?](#)

In conclusion, solar battery cabinets can be connected in parallel, offering increased energy storage capacity, redundancy, and load - balancing benefits. However, it is essential to ...

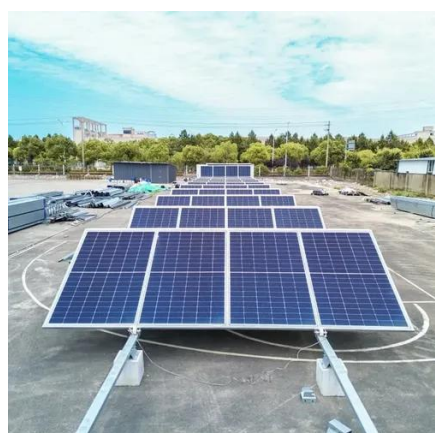


[Lithium Solar Batteries Series vs Parallel Connection](#)

Understanding how to connect these batteries in series or parallel is crucial for optimizing performance and ensuring efficient energy use. This guide explains the differences between these ...

[Batteries in Series vs Parallel: Understand The Differences](#)

While series and parallel each have their place, I'm particularly excited about series-parallel combinations. These hybrid setups offer unparalleled flexibility, allowing us to fine-tune voltage and ...



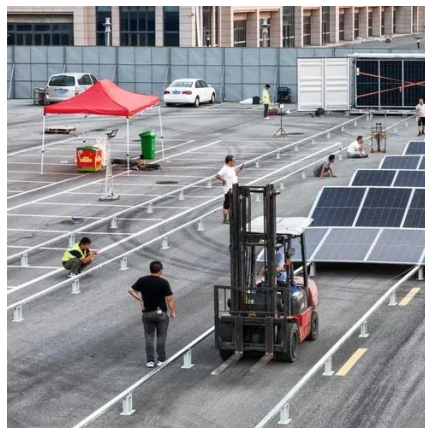
[How to connect solar battery banks series, parallel or both? Beginner](#)

Series allows you to connect batteries while increasing voltage and amperage stays the same. Parallel allows you to connect batteries while maintaining voltage and increasing amperage. ...

[Batteries in Series vs Parallel: What You Need to Know](#)



You can connect batteries in series and parallel, simultaneously achieve higher voltages and greater capacity, whilst distributing current across multiple paths to reduce the load on individual ...



[Series vs Parallel Battery Connections: Pro & Cons](#)

When setting up a battery bank for solar power, RVs, marine applications, or off-grid systems, understanding the difference between series and parallel connections is crucial. The way batteries ...



[A Beginner's Guide to Series vs Parallel Battery Connections](#)

This article makes the decision making process easy by breaking down series and parallel battery connections in a way that's instantly useful. We'll tell you exactly what you need to know to make ...





Contact Us

For catalog requests, pricing, or partnerships, please visit:

<https://www.iwap.com.pl>

Phone: +34 919 456 782

Email: info@iwap.com.pl

Scan the QR code to access our WhatsApp.

