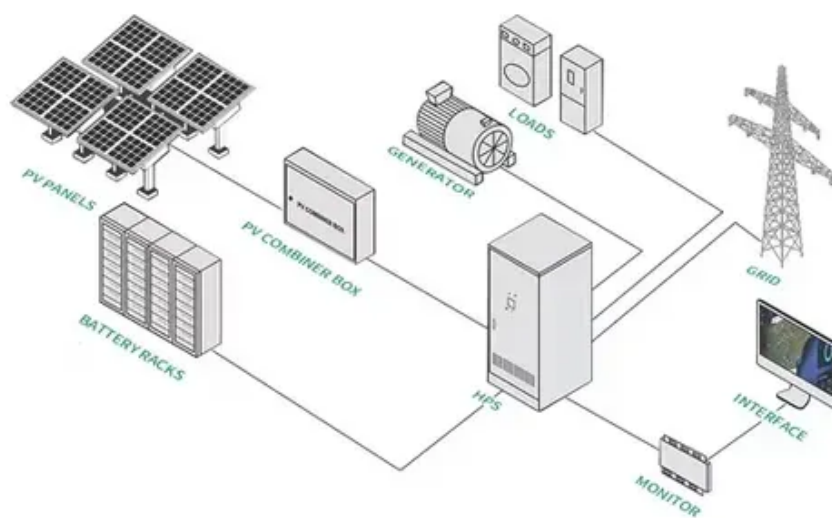




Are the cells of the photovoltaic panel connected in series





Overview

Solar PV cells are interconnected electrically in series and parallel connections within a panel (module) to produce the desired output voltage and/or current values for that panel. Typically, solar PV panels consist of 36, or 60, or 72 interconnected solar cells. To achieve such a large power, we need to connect N-number of modules in series and parallel. It is important to understand these two configurations as we have to estimate our home needs or power storage for. As a rule, engineers want their panels wired using the series, parallel or series-parallel configurations. Solar cells, also called photovoltaic (PV).



Are the cells of the photovoltaic panel connected in series

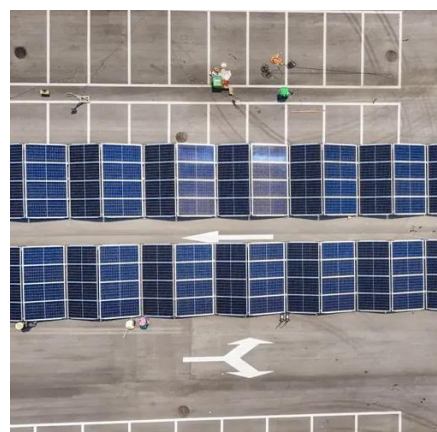
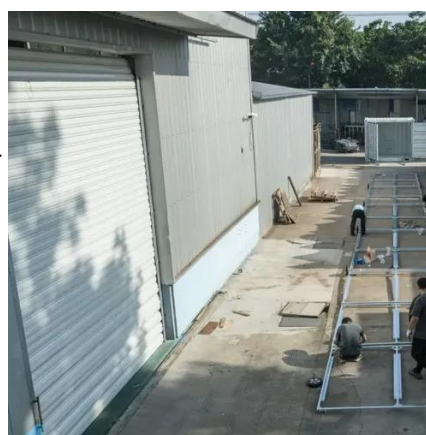


[Understanding Solar Panels in Parallel and Series Connections](#)

A solar panel (also known as a photovoltaic panel) is a device that converts sunlight into direct current (DC) electricity. Each panel is made up of multiple solar cells wired internally in series ...

[Solar Panels Series vs Parallel: What's Best for ...](#)

In series connection, the panels are connected end-to-end, and in parallel connection, the panels are connected side-by-side.



[Solar Cells : Series and Parallel Connections of SOLar cells Lab ...](#)

Solar cells can be connected in series to increase the output voltage, shown in Figure 1. Total voltage is equal to the sum of individual voltages. Solar cells in series are termed string. Because solar cells ...

[Solar Panels in Series vs. Parallel: 6 Difference and Which Is Better?](#)

In a series connection, solar panels are linked end-to-end by connecting the positive terminal of one panel to the negative terminal of the next. This setup causes the voltage of each ...



Standard 20ft containers



Standard 40ft containers



[Are solar cells connected in series or parallel](#)

Solar cells are often connected in series to increase voltage (e.g., 36 cells for ~18V) or in parallel to boost current. Series connections are common in panels, while parallel wiring is used in arrays to ...

[Connecting Solar Panels in Series Vs Parallel](#)

Ultimately, for faster charging of the battery, it is better to connect the panels in series rather than parallel. Also, you must take proper safety measures to prevent any injuries or ...



[How to connect solar panels together: Series, parallel, combo](#)

When panels are connected in series, shade on one panel can significantly reduce the output of the entire string - like one bad bulb affecting a whole string of Christmas lights. Parallel ...

[Series, Parallel & Series-Parallel Connection of PV Panels](#)



In large PV plants first, the modules are connected in series known as "PV module string" to obtain the required voltage level. Then many such strings are connected in parallel to obtain the required ...



[Series Connected Solar Panels For Increased Voltage](#)

Solar PV cells are interconnected electrically in series and parallel connections within a panel (module) to produce the desired output voltage and/or current values for that panel.



[Understanding the series and parallel connection of solar panels](#)

Engineers also connect solar panels in a series-parallel configuration. Several panels are first wired together in series to form strings of panels (for instance, three strings of solar panels ...





Contact Us

For catalog requests, pricing, or partnerships, please visit:

<https://www.iwap.com.pl>

Phone: +34 919 456 782

Email: info@iwap.com.pl

Scan the QR code to access our WhatsApp.

