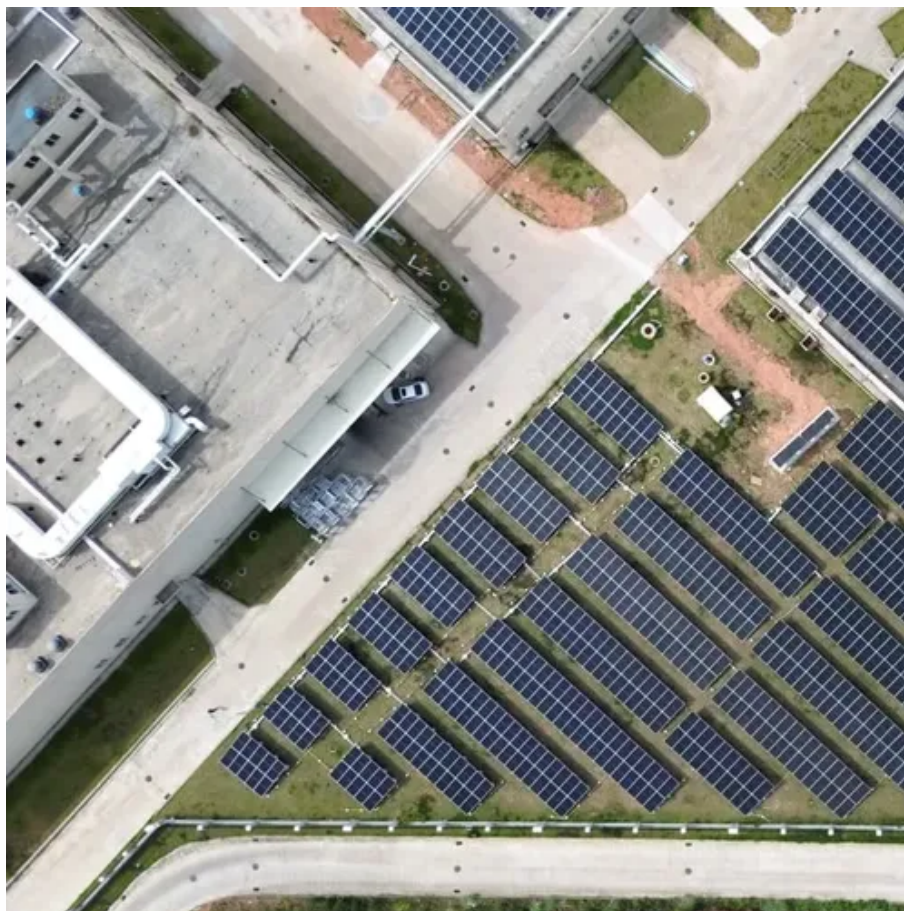




Aurora power one inverter monitoring



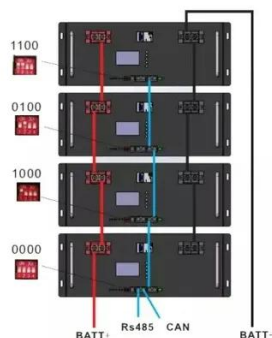


Overview

It is intended for use with Aurora power inverters in domestic solar-voltaic power generation installations. Aurora Monitor displays continuously updated graphs, numerical values, and alarm status. Autonomous centraline with an esp8266 that grab and store data from inverter and show charts and various data of production and can send notification email if there are some problems. It is a quite user-friendly browser based monitoring solution, It's allows to track energy produced on a solar. Aurora Monitor is a graphical application which continuously monitors the power output and other information from either one or two Power-One Aurora inverters. It runs under Linux and Windows. WattMetrics is compatible with the models listed below. Please contact us if. Power-One's Desktop product allows inverter owners to monitor performance from anywhere within 300 metres of the units. Ideal for residential and small commercial PV applications, the Desktop features touch screen colour TFT display and can be either wireless or connected.



Aurora power one inverter monitoring



Monitoring Power-One Inverters

WattMetrics is compatible with the models listed below. If your inverter model isn't listed below, that doesn't necessarily mean that it won't work with WattMetrics. Please contact us if you don't see your inverter here.

[Power-One Aurora / ABB / FIMER Inverter Monitoring Tool](#)

AuroraMonbus is a Windows desktop application written in C# (8) that communicates directly with some Power-one Aurora / ABB / FIMER Aurora solar inverters over RS-485 (serial).



[ABB \(ex Power One\) Aurora Web Inverter Monitor \(WIM\): project](#)

I would like to monitor the status of my ABB Aurora inverter (formerly Power One now Fimer). So with a WeMos D1 mini I create a monitoring station with web interface, notifications and more. Here we will ...

[Power One AURORA Installation And Operator's Manual](#)

Larger photovoltaic systems can be composed of a certain number of arrays, connected to one or more AURORA inverters. By maximizing the number of panels in series per string, the cost and complexity of the ...



[Inverter Aurora ABB \(Power One\) Web Monitor \(WIM\) With Esp8266](#)

Inverter Aurora ABB (Power One) Web Monitor (WIM) With Esp8266: Autonomous central line with an esp8266 that grab and store data from inverter and show charts and various data of production and can send ...

[Inverter Aurora ABB \(Power One\) Web Monitor \(WIM\) With Esp8266](#)

This project is an autonomous central unit using an ESP8266 (WeMos D1 mini) designed to monitor solar power plant energy production by interfacing with Aurora ABB (ex PowerOne) inverters via RS ...



Power-One PVI-DESKTOP

You can watch energy harvesting data for up to six Aurora inverters at once using the Desktop monitoring system. Wireless communication requires an additional radio transceiver fitted within the inverter.

Aurora Monitor



Aurora Monitor is a graphical application which continuously monitors the power output and other information from either one or two Power-One Aurora inverters. ().



[Power-One Aurora Easy Control PRO , Monitoring System Pro-2](#)

Built to industrial standards, it enables real-time inverter status monitoring, alarm management, and system parameter adjustments directly via its LCD interface or remotely through LAN connection.



[Aurora Inverter Monitoring Guide , Enhance Solar Performance](#)

Stay on top of your solar energy production today by effectively monitoring your Aurora inverter. Our guide provides practical tips to maximise efficiency.





Contact Us

For catalog requests, pricing, or partnerships, please visit:

<https://www.iwap.com.pl>

Phone: +34 919 456 782

Email: info@iwap.com.pl

Scan the QR code to access our WhatsApp.

