



Base station link communication scheme





Base station link communication scheme



[GSM Protocol Stack and Architecture Explained](#)

Explore the GSM protocol stack and architecture for Mobile Stations (MS) and Base Transceiver Stations (BTS), covering Layer 1 (PHY) and Layer 2 (LAPD, LAPDm).

[Optimizing redeployment of communication base station](#)

In this paper, the major work is to solve the "blind spot" of 5G existing network BSs. In other words, it aims to solve the signal coverage problem of weak coverage points on the basis of 5G ...



[Fake Base Station Detection and Link Routing Defense](#)

We designed and built a defense scheme which detects and blacklists a fake base station and then, informed by the detection, avoids it through link routing for connectivity availability.

[Integrated Cooperative Sensing and Two-Way Communications With ...](#)

To address this situation, under the framework of a wireless network with two adjacent cells and with the aid of BSs cooperation, this paper presents two integrated cooperative sensing ...



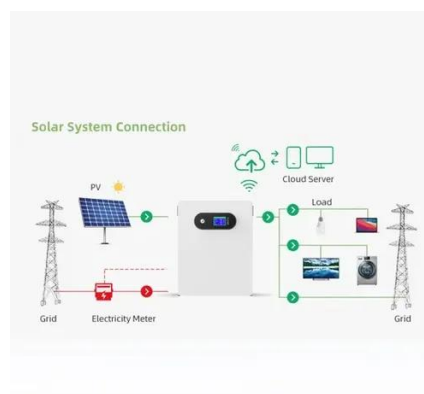
[Sensing-Assisted Secure Uplink Communications with Full ...](#)

Abstract--This letter proposes a sensing-assisted uplink communications framework between a single-antenna user and a full-duplex (FD) base station (BS) against an aerial eavesdropper



[38-WirelessStandards+Modulation posted.pptx](#)

Elements of a Wireless Network network infrastructure base station typically connected to wired network act as relay - responsible for sending packets between wired network and wireless host(s) in its ...



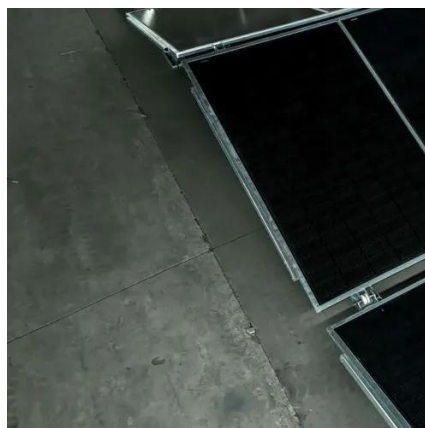
[5G Network RF Planning - Link Budget Basics](#)

Objective: The goal of RF planning is to ensure reliable and efficient communication between the user equipment (UE) and the base station (gNodeB in 5G) over the radio interface.

[Uplink MIMO Communications With RIS-Integrated Base Station: ...](#)



In this article, we propose an RIS-integrated base station (BS) by deploying an RIS sufficiently close to the base station antennas (BAs), within its radiative near-field range.



[Who Needs Basestations When We Have Sidelinks? , IEEE Communications](#)

Sidelink is a 3rd Generation Partnership Project (3GPP) standardized technology that enables direct user-to-user communications, with or without the assistance of a base station.

Base Stations

Backhaul Connection: The backhaul connection links the base station to the core network in the mobile communication system. It provides for the interchange of data between the base station ...





Contact Us

For catalog requests, pricing, or partnerships, please visit:

<https://www.iwap.com.pl>

Phone: +34 919 456 782

Email: info@iwap.com.pl

Scan the QR code to access our WhatsApp.

