



Base station site installation requirements and standards





Overview

This document introduces the requirements set by the Nokia MetroSite EDGE Base Station for successful installation and operation. Use of the copyrighted material apart from this document must have the permission or update of the document. As such it should be reviewed in its entirety as some sections, figures, and tables have different infrastructure projects. For construction applications, where machine and site positioning operations using GNSS will be carried out over a long time (weeks, months, or years), ensure that you carefully choose the base station location. A. Installing a Base Transceiver Station (BTS) is a critical step in building mobile communication networks. Here's a step-by-step guide to the process: 1.



Base station site installation requirements and standards



ER 1110-3-113

Domestic Water Distribution - Determine installation or private utility requirements, including details, specifications, meter requirements, backflow prevention, etc.

[Complete BTS Site Installation . PDF . Electrical Connector](#)

The document provides instructions for installing a BTS (Base Transceiver Station) site. It describes assembling and installing antennas, routing antenna and RF cables, installing surge ...



[COMMUNICATION SITE BUILDING DESIGN AND ...](#)

For shipping, these structures must meet strict dimensional requirements, including protrusions such as HVAC, RF entry assemblies, or AC entrances. In the US, state certification may be required if pre-fab ...

[Updates on Guidelines for 5G Equipment Authorization](#)

Accordingly, for all the modes of operations allowed by design (that is combinations of DSS, LTE and NR) it is necessary to show that the system remains compliant with the FCC requirements, and ...



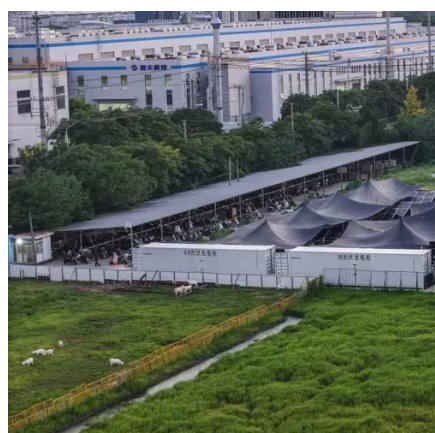
[Requirements for Installation and Operation](#)

This document introduces the requirements set by the Nokia MetroSite EDGE Base Station for successful installation and operation. Use this document as the source for the following information ...



[Process of Installing a Base Transceiver Station \(BTS\)](#)

Installing a Base Transceiver Station (BTS) is a critical step in building mobile communication networks. Here's a step-by-step guide to the process:



[Mobile Base Station Site Compliance , Corearth](#)

All mobile base station sites are required to be approved for EME compliance. This process ensures the safety of the General Public. Compliance relies on the successful design of a mobile base station ...

2024 BASE FACILITY STANDARD



A site visit shall be scheduled with the Contractor and Base Officials prior to the first formal plans submittal to review on-the-ground site conditions and the potential impact of proposed site changes

...



Common ways to set up a base station

Before you set up a base station, please see Base station operation guidelines. For construction applications, where machine and site positioning operations using GNSS will be carried out over a ...

[Complete Guide to 5G Base Station Construction . Key Steps, ...](#)

Explore how 5G base stations are built--from site planning and cabinet installation to power systems and cooling solutions. Learn the essential components, technologies, and challenges ...





Contact Us

For catalog requests, pricing, or partnerships, please visit:

<https://www.iwap.com.pl>

Phone: +34 919 456 782

Email: info@iwap.com.pl

Scan the QR code to access our WhatsApp.

