



# Battery site cabinet parameter setting requirements





## Overview

---

The cabinet site requirements are as follows: Cabling space should be planned, and cable ladders or trays should be designed at the installation position of the cabinet. The power grid should meet the cabinet rated input rating requirements. VRLA Batteries have specific requirements for compliance with the building codes, fire codes, OSHA and may be subject to additional requirements from Authorities having Jurisdiction (AHJ). Also learn the. For the purposes of Certificate of Public Convenience and Necessity (CPCN) review and approval, we recommend that future CPCN applicants with battery storage systems be required to submit plans for battery siting, safety, and decommissioning to the Maryland Public Service Commission (PSC) for. Will the battery storage system be sited indoors or outdoors?

- Depending on the size of the battery and needs of the site, it is important to determine early on if the battery will be sited in the facility or outside of it. The chapter covers the additional safety-related work practices necessary to practically safeguard employees against the. Instead, we should be prepared to face the likely possibility of hydrogen build up, clearly identify the conditions when the risk is highest, and design systems that protect us from explosive levels in a fail-safe way. Although the code is specific about requirements, the local interpretation can vary depending on the end users.



## Battery site cabinet parameter setting requirements



### [Siting and Safety Best Practices for Battery Energy Storage Systems](#)

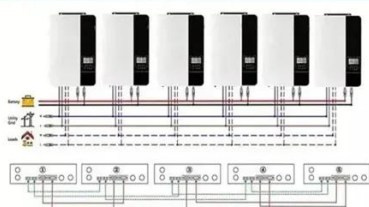
For the purposes of CPCN review and approval, we recommend that future CPCN applicants with battery storage systems be required to submit plans for battery siting, safety, and decommissioning ...

### [Battery station cabinet parameter setting requirements](#)

The battery management system is considered to be a functionally distinct component of a battery energy storage system that includes active functions necessary to protect the battery from modes of ...

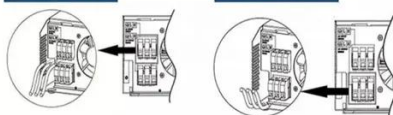


Parallel (Parallel operation up to 6 unit (only with battery connected))



AC input wires

AC output wires

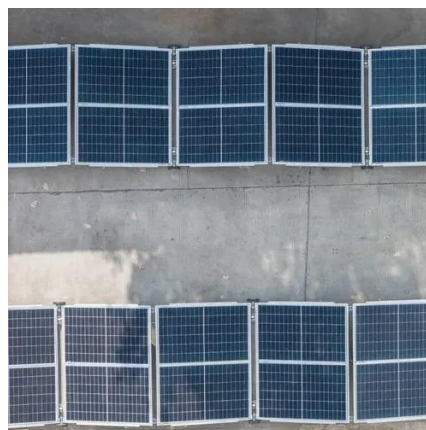


### Battery Room Ventilation and Safety

Many of the model building codes and recognized standards such as IEEE, OSHA, NEC, and NFPA Life Safety Codes outline the requirements for the design and installation of battery rooms.

### [NFPA 70E Battery and Battery Room Requirements](#) [NFPA](#)

Article 320 reiterates that the employer must provide safety-related work practices and employee training. The employee must follow the training and work practices. It also requires that ...



### [Energy storage battery compartment requirements](#)

Battery energy storage systems (BESS) ensure a steady supply of lower-cost power for commercial and residential needs, decrease our collective dependency on fossil fuels, and reduce carbon emissions ...

### **Site Requirements**

Reserve at least 1300 mm from the front of the cabinet. Reserve a clearance of at least 500 mm from the top of the cabinet for operations. If the cabinet is operated and maintained from the front, no space ...



### [Siting and Safety Best Practices for Battery Energy Storage Systems](#)

The siting plan should address: undergrounding on-site utility lines; maintaining vegetation free buffers; following noise, height, and setback requirements; fencing or enclosing the site; and installing ...



### [Requirements for the Battery Installation Site](#)



All ambient conditions must be met. A homogeneous temperature distribution within the battery room must be guaranteed. The installation site must be less than 2000 m above mean sea level. If you ...



### [Best Practices and Considerations for Siting Battery Storage ...](#)

- o Depending on the size of the battery and needs of the site, it is important to determine early on if the battery will be sited in the facility or outside of it.
- o This decision may be impacted by any noise and ...

### [Maintaining Compliance in the VRLA Battery Room](#)

Learn the requirements for VRLA batteries and how to be compliant with current regulation. Also learn the various rack compliance requirements and best practices including IBC, UBC, NEBS, IEEE and ...





## Contact Us

---

For catalog requests, pricing, or partnerships, please visit:

<https://www.iwap.com.pl>

Phone: +34 919 456 782

Email: [info@iwap.com.pl](mailto:info@iwap.com.pl)

Scan the QR code to access our WhatsApp.

