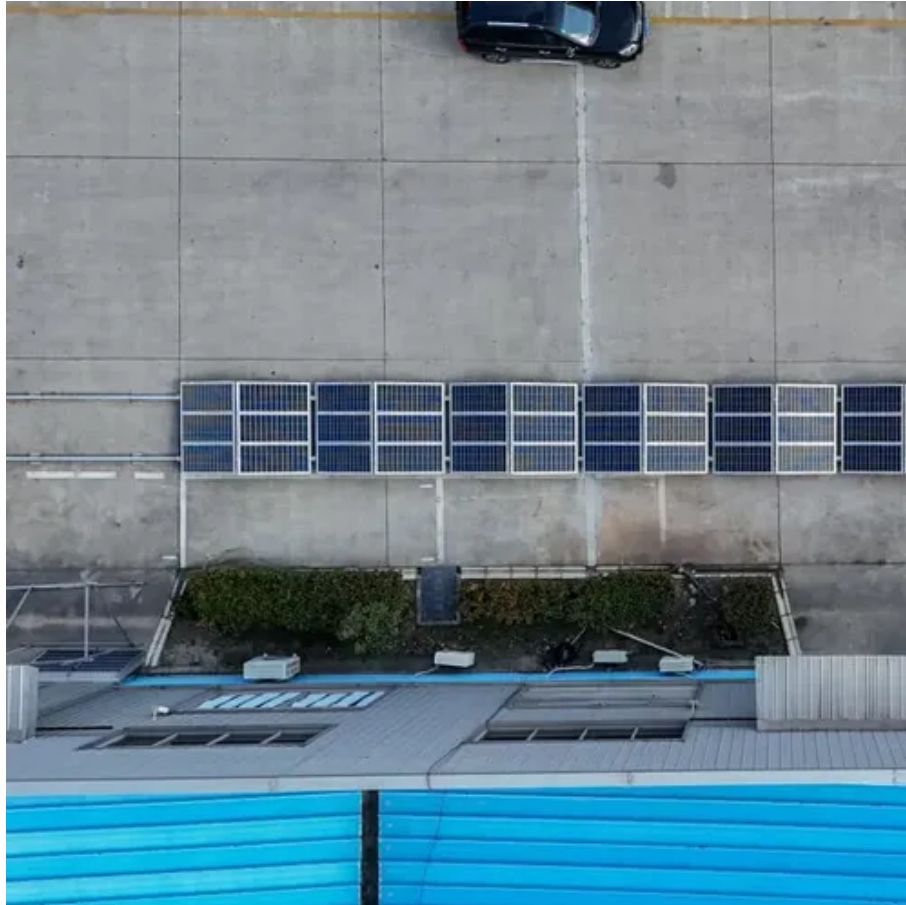




Benefits of building 5G communication base stations with wind power





Benefits of building 5G communication base stations with wind power



[5G BASE STATION USING WIND POWER GENERATION ...](#)

Base station operators deploy a large number of distributed photovoltaics to solve the problems of high energy consumption and high electricity costs of 5G base stations.

[Research on Offshore Wind Power Communication System Based on ...](#)

Method First, a PTN+ integrated small base station with large signal coverage and strong reliability was built, and then the 5G integrated small base station with the PTN gateway were ...



[5G and energy internet planning for power and communication ...](#)

Our research addresses the critical intersection of communication and power systems in the era of advanced information technologies. We highlight the strategic importance of ...



The Importance of Renewable Energy for Telecommunications Base Stations

In this paper we assess the benefits of adopting renewable energy resources to make telecommunications network greener and cost-efficient, tackling "3E" combination-energy security,



[The Future of Energy-Efficient 5G Base Station Design](#)

Renewable energy sources such as solar and wind play a significant role in powering energy-efficient 5G base stations. Integration of smart technologies like AI and IoT can optimize ...



How 5G can turbo-charge wind energy

Vayu AI is testing the use of a private 5G network to improve the performance of a six-turbine wind farm in Montana in the U.S. The company plans to pilot the solution in larger wind farms ...



[Optimal Scheduling of 5G Base Station Energy Storage Considering ...](#)

This article aims to reduce the electricity cost of 5G base stations, and optimizes the energy storage of 5G base stations connected to wind turbines and photov



CN111447693A



The sail module and the power generation module are erected on a high-rise signal tower, the conversion efficiency is improved through the built-in speed-increasing gear structure, the windward



[Wind power construction of communication base stations](#)

We investigate the use of wind turbine-mounted base stations (WTBSs) as a cost-effective solution for regions with high wind energy potential, since it could replace or even outperform

[The Importance of Renewable Energy for ...](#)

In this paper we assess the benefits of adopting renewable energy resources to make telecommunications network greener and cost-efficient, ...



[Building wind and solar complementary communication base ...](#)

In today's 5G era, the energy efficiency (EE) of cellular base stations is crucial for sustainable communication. Recognizing this, Mobile Network Operators are actively prioritizing EE for





Contact Us

For catalog requests, pricing, or partnerships, please visit:

<https://www.iwap.com.pl>

Phone: +34 919 456 782

Email: info@iwap.com.pl

Scan the QR code to access our WhatsApp.

