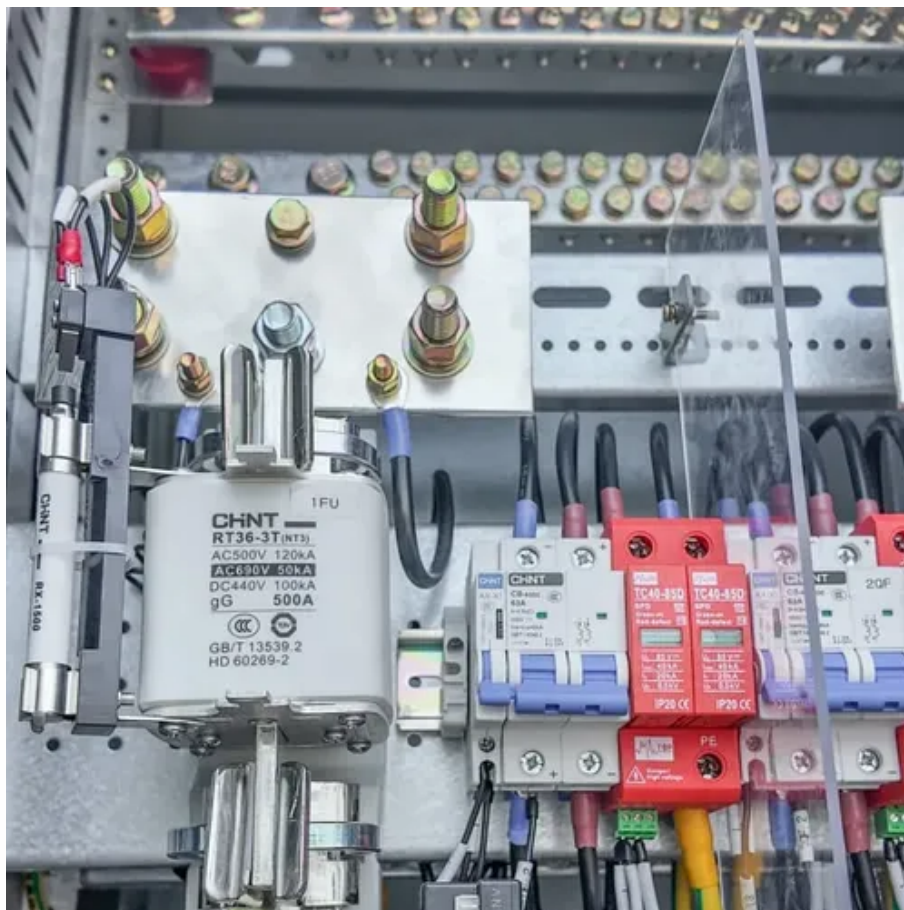




Bergey 10 kw wind turbine





Overview

The BWC Excel 10 is a modern 7 meter (23 ft) diameter, 10 kW wind turbine designed for high reliability, low maintenance, and automatic operation in adverse weather condition.



Bergey 10 kw wind turbine



Excel 10 Off Grid

The BWC Excel 10 is a modern 7 meter (23 ft) diameter, 10 kW wind turbine designed for high reliability, low maintenance, and automatic operation in adverse weather condition

BERGEY EXCEL 10 - Wind Turbine For Sale

Apparently, the Bergey Excel 10 is ideal for homes, farms, and small businesses.



Bergey Windpower Small Wind Turbines

Bergey's 10 kW unit, the BWC EXCEL-S, is the best selling residential unit in the U.S. It has a rotor diameter of 23 feet and is typically installed on 80 or 100-foot towers.

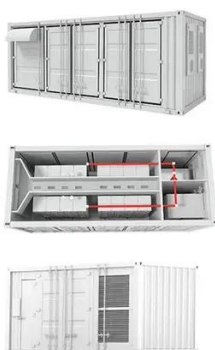
Bergey BWC Excel 10

In the generator, Bergey WindPower Co. sets to Synchronous permanent. The manufacturer has used one generator for the BWC Excel 10. The voltage amounts to 220 V. At the mains frequency, the ...



Bergey Wind Power

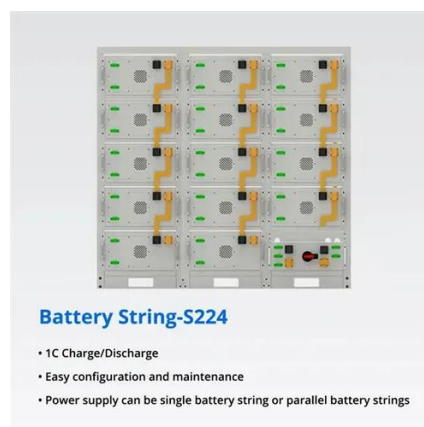
With only three moving parts and no scheduled maintenance necessary, the Bergey 10 kW has compiled a service record that no other wind turbine can match. We back it up with the longest ...



[Bergey Excel 10Kw Grid-Tie Turbine + 12kW Powersync Inverter](#)

Bergey Wind Generators

The EXCEL 10 is a 7 meter (23 ft) diameter three-blade upwind turbine that achieves high reliability through rugged construction and a minimum of moving parts. The rotor on the EXCEL has three ...



Bergey Excel 10kW Wind turbine

The new Bergey Excel 10 is ideal for large homes, farms, and small businesses. Its extra large rotor and ultra low cut-in wind speed give it exceptional performance, out producing all other turbines in its class.



IMPORTANT: Only two turbines are available at this special price! Bergey's BWC Excel grid-intertie wind turbines are rated for 10 kilowatts AC output in a utility-interconnection system.



[Bergey BWC Excel 10 Off-Grid Wind Turbine](#)

The BWC Excel 10 is a modern 7 meter (23 ft) diameter, 10 kW wind turbine designed for high reliability, low maintenance, and automatic operation in adverse weather condition



Contact Us

For catalog requests, pricing, or partnerships, please visit:

<https://www.iwap.com.pl>

Phone: +34 919 456 782

Email: info@iwap.com.pl

Scan the QR code to access our WhatsApp.

