



BI-13 Wireless communication base station battery usage





Overview

Therefore, the model and algorithm proposed in this work provide valuable application guidance for large-scale base station configuration optimization of battery resources to cope with interruptions in practical scenarios. We mainly consider the demand transfer and sleep mechanism of the base station and establish a two-stage stochastic programming model to minimize battery. Professional mobile solar container solutions with 20-200kWp solar arrays for mining, construction and off-grid applications. In conclusion, the use of LifePO4 Solar Battery systems in telecom towers is a game-changer for the industry. Parameters such as base station battery. Among various battery technologies, Lithium Iron Phosphate (LiFePO4) batteries stand out as the ideal choice for telecom base station backup power due to their high safety, long lifespan, and excellent thermal stability. For this reason, battery backups and generators are installed in a wireless base station's power supply system to allow continuous operation under all circumstances.



BI-13 Wireless communication base station battery usage



[How to use the bi13 flow battery for wireless solar container](#)

Learn how to set up a mobile solar container efficiently--from site selection and panel alignment to battery checks and EMS configuration. Avoid common mistakes and get

[BI-13 Wireless solar container communication station battery usage](#)

HJ-SG Solar Container provides reliable off-grid power for remote telecom base stations with solar, battery storage and backup diesel in one plug-and-play solution.



[Optimization of Communication Base Station Battery Configuration](#)

For this reason, we propose a model for allocating battery resources in base stations under uncertain interruption durations, which combines the state and battery resource usage ...

[Optimization of Communication Base Station Battery Configuration](#)

In the communication power supply field, base station interruptions may occur due to sudden natural disasters or unstable power supplies. This work studies the optimization of battery ...



[Global Communication Base Station Li-ion Battery Supply, Demand ...](#)

Parameters such as base station battery capacity and charging time vary depending on specific usage scenarios and needs. Base station batteries play a vital role in communication infrastructure, ...



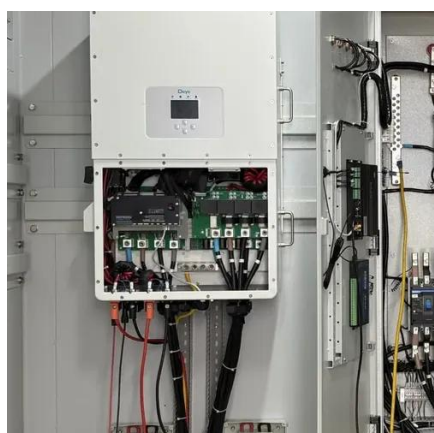
[Power Supply Solutions for Wireless Base Stations Applications](#)

In case of a power outage, shutting down a wireless base station is not an option. For this reason, battery backups and generators are installed in a wireless base station's power supply system to ...



Base station communication battery life

Telecom base stations--integral nodes in wireless networks--rely heavily on uninterrupted power to maintain connectivity. To ensure continuous operation during power outages or grid fluctuations, ...



[Portable emergency communication base station battery](#)



Among various battery technologies, Lithium Iron Phosphate (LiFePO4) batteries stand out as the ideal choice for telecom base station backup power due to their high safety, long lifespan, and excellent ...



Telecom Base Station Battery

Uninterrupted Power Supply: Our batteries provide immediate backup power during grid outages, ensuring continuous operation of base stations and maintaining network stability.



Contact Us

For catalog requests, pricing, or partnerships, please visit:

<https://www.iwap.com.pl>

Phone: +34 919 456 782

Email: info@iwap.com.pl

Scan the QR code to access our WhatsApp.

