



# Can two solar battery cabinet lithium battery packs be connected in parallel





## Overview

---

Yes, you can mix different capacity lithium batteries, whether a normal 12V 100Ah battery or a Lithium server rack battery. There are a few points you need to consider when wiring in. Summary: Connecting lithium battery packs in parallel is a common practice to increase capacity and redundancy in renewable energy systems. But in practice, doing it properly requires careful attention to safety, battery compatibility, and wiring techniques. The voltage will remain constant. Safety is crucial—never mix old and new batteries or different brands.



## Can two solar battery cabinet lithium battery packs be connected in p



### [A Complete Guide to Parallel Connection of Lithium Ion Batteries](#)

You can connect lithium batteries in a parallel connection to achieve greater capacity. The voltage will remain constant. Always ensure that your batteries have the same voltage and ...



### [How to Connect 2 Batteries to a Solar Panel: A Complete Guide for](#)

Unlock the secrets to enhancing your solar power system by connecting two batteries effectively! This comprehensive guide covers the essential components, safety precautions, and step ...

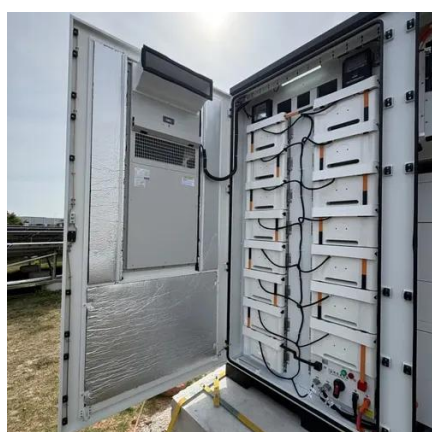
### [Can I parallel multiple Lithium Battery Packs?](#)

The short answer is yes, you can parallel multiple lithium battery packs. However, there are several factors you need to consider to ensure a safe and efficient operation. One of the most ...



### [Parallel Connection of Batteries in DIY Solar Power ...](#)

A guide on safely connecting multiple batteries in parallel for DIY solar power systems, covering battery chemistry, cell count, and more



### [How to Connect Two Lithium Battery Packs in Parallel: A Step-by-Step](#)

This guide explains the process, safety considerations, and real-world applications - perfect for solar installers, EV enthusiasts, and industrial energy managers.

### [Lithium Solar Batteries Series vs Parallel Connection](#)

To connect batteries in parallel: Identify Terminals: As before, know which terminal is positive (+) and which is negative (-). Connect All Positives Together: Link all positive terminals of ...



### [Guide to Connecting Batteries in Parallel Properly - PowMr](#)

For a simple setup with just two batteries, connect them in parallel using a diagonal connection. Connect all the middle terminals together, positives to positives and negatives to ...

### [Can You Safely Connect Two Lithium Batteries in Parallel?](#)



Yes, you can connect two lithium batteries in parallel to increase capacity while maintaining voltage. Ensure both batteries have identical voltage, capacity, and state of charge to prevent imbalances.



### [Balancing multiple LiTime 24V batteries connected in parallel](#)

Below two steps are necessary to reduce the voltage difference between batteries and let the battery system perform the best of in in series or/and in parallel. Step 2: Connect all of the ...

### [Can You Mix Different Capacity Lithium Batteries?](#)

When you connect your batteries in parallel, they must have the same state of charge before connecting them. Because the voltage level of a LiFePO4 battery is flat in the middle, I ...





## Contact Us

---

For catalog requests, pricing, or partnerships, please visit:

<https://www.iwap.com.pl>

Phone: +34 919 456 782

Email: [info@iwap.com.pl](mailto:info@iwap.com.pl)

Scan the QR code to access our WhatsApp.

