



# Causes of condensation on the surface of photovoltaic panels





## Overview

---

The surface tension of water droplets on photovoltaic surfaces is a driving force in dust agglomeration, impeding photoelectric efficiency. Solar panels are an increasingly promising renewable energy alternative to fossil fuels and a useful tool for reducing greenhouse gas emissions.



## Causes of condensation on the surface of photovoltaic panels

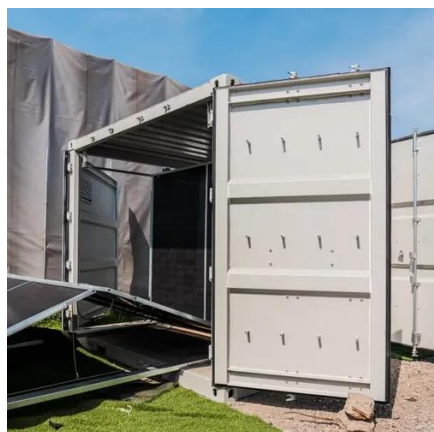


### [Impact of dust and temperature on photovoltaic panel performance: A](#)

The model focuses on the impact of environmental factors such as dust accumulation, increased surface temperature, wind speed, and rainfall on the efficiency of PV panels.

### **A holistic review of the effects of dust buildup on solar photovoltaic**

Humidity also has an impact on PV production since it causes more dust to accumulate on the panels. Increased humidity promotes dust particle adherence to the PV panel surface.



### [Is it normal to see moisture inside my solar panels?](#)

One of the most immediate impacts of moisture presence inside a solar panel is the formation of a thin layer of water on the surface of the photovoltaic cells. This layer can act as a ...

### [Investigation of factors affecting condensation on soiled PV modules](#)

Condensation contributes to soiling of photovoltaic modules by trapping dust particles and, in certain conditions, leaving a material bridge between particles and the surface after



### [How condensation causes dusty solar panels](#)

Solar panels are an increasingly promising renewable energy alternative to fossil fuels and a useful tool for reducing greenhouse gas emissions. However, dust agglomeration on the surface of ...



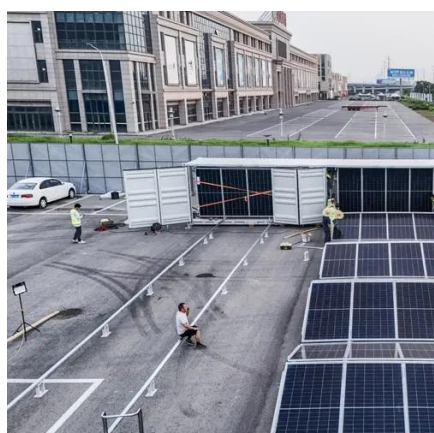
### **Why Solar Panels Look Foggy or Cloudy**

Foggy or cloudy solar panels can signal moisture, damage, or surface buildup. Learn what causes it and how to restore full system performance.



### [Condensation on photovoltaic panel surface](#)

The AWGPV panel, short for Atmospheric Water Generation on PV panel, is specifically designed to facilitate water condensation and is intended for nighttime operation.



### **An analysis of surface-soiling and self-cleaning of photovoltaic panel**



Complex physical and chemical interactions occur between dust and condensate on the surface of PV module under condensation, which determine the mode and severity of surface ...



### **An analysis of surface-soiling and self-cleaning of photovoltaic panel**

Solar photovoltaic panels are experiencing lower performance due to two reasons, high diurnal surface temperatures and nocturnal dew accumulation leading to mud formation on the ...



## Contact Us

---

For catalog requests, pricing, or partnerships, please visit:

<https://www.iwap.com.pl>

Phone: +34 919 456 782

Email: [info@iwap.com.pl](mailto:info@iwap.com.pl)

Scan the QR code to access our WhatsApp.

