



Charges for transporting wind turbine blades



- ✓ IP65/IP55 OUTDOOR CABINET
- ✓ IP54/55
- ✓ OUTDOOR ENERGY STORAGE CABINET
- ✓ OUTDOOR BATTERY CABINET





Overview

The cost of hauling a wind turbine depends on the distance needed to be transported. The costs associated with transportation and logistics of large, heavy components make it desirable. Wind energy is booming, and with it comes the challenge of moving massive turbine components—highlighted in DOE insights on wind energy logistical constraints —across cities, highways, and remote locations. Every blade, tower section, and nacelle component travels separately, often across state lines. And the costs aren't just financial. However, with wind turbine transportation, the best route is adjusted for limitations and barriers, including both physical and safety since the 1980s and continue to today (AWEA, 2017).



Charges for transporting wind turbine blades



Smarter Trucking: Cutting Costs and Emissions in Wind Turbine Transport

Consider the basics: a single wind turbine can require over a dozen oversized hauls. Every blade, tower section, and nacelle component travels separately, often across state lines. And the costs aren't just ...

[Wind Turbine Transport: The Logistics Behind Renewable Energy](#)

The cost of transporting a wind turbine depends on distance, permits, equipment, fuel surcharges, and escort vehicles. On average, moving a single wind turbine can cost between \$100,000 and \$150,000.



[Efficient Windmill Blade Transport Solutions, Reliable Service](#)

New Deals are now available for shipping all types vehicles using our vetted reliable shippers. Compare price estimates & Unlock up 25% off. Route surveys are a fundamental aspect of windmill blade transport, ...



[Wind Turbine Transportation, Oversize Wind Blade, Tower and ...](#)

Some components can be broken down for shipping, but the blades must be transported as a single piece. Hauling wind turbine blades that are 116 feet long represents a significantly oversized load. At this length, ...



[How Wind Turbines Are Transported: Challenges & Solutions](#)

Q: How much does it cost to transport a wind turbine? A: Costs vary widely depending on turbine size, distance, and complexity of the route, including permits and equipment.



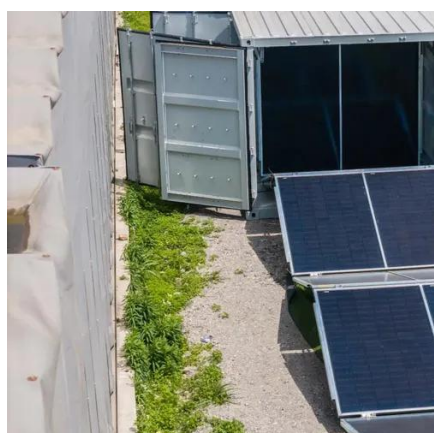
[Solving the Challenge of Transporting Wind Turbine Blades](#)

ze will ultimately lead to higher transportation costs. Currently, wind components are transported using a v. riety of different modes, including ship, rail and truck. For example, a 150 megawatt wind farm can require as ...



How to Transport Wind Turbine Blades

In more traditional shipping projects, route planners often aim for the fastest, most cost-effective transport option. However, with transporting wind turbine blades routes often have to be adjusted. Due to the large size ...



[How Much Does It Pay To Haul Those Wind Turbines](#)



Transporting wind turbine blades from ports to wind farms costs approximately \$100, 000 to \$150, 000. As blades increase in size and weight, these costs may rise due to logistical challenges.



How to transport Wind Turbines

Wind turbines are large and heavy, making their transportation a significant logistical challenge. This guide will explore the steps involved in transporting a wind turbine and discuss the costs associated with this endeavor.

[Shipping wind turbines and blades - Global network, DSV](#)

With this global network and set-up, you have access to the know-how and vessels you need to move and ship your wind turbines wherever they need to be safely and efficiently - whether that's an individual wind turbine, ...





Contact Us

For catalog requests, pricing, or partnerships, please visit:

<https://www.iwap.com.pl>

Phone: +34 919 456 782

Email: info@iwap.com.pl

Scan the QR code to access our WhatsApp.

