



Common size of photovoltaic panels





Common size of photovoltaic panels



[Solar Panel Size & Dimensions Guide 2025 . Complete Specs](#)

Complete guide to solar panel sizes and dimensions. Compare 60-cell vs 72-cell panels, weights, roof space requirements, and installation specs for 2025.

[Perfect Solar Panel Sizes for Your Home \(Expert Sizing Guide\)](#)

Most residential solar panels measure between 65 to 75 inches long and 39 to 41 inches wide, delivering power outputs ranging from 250 to 400 watts per panel.



[Solar Panel Sizes: Choosing the Right Dimensions for Any Project](#)

Choosing the right solar panel size can make or break your system's performance. In this guide, we break down how to match your energy needs, roof space, and budget with the ideal panel ...

[Size of Solar Panels Explained: Residential and Commercial Standards](#)

These panels come in a standard size, which is approximately 1650 x 990 mm (65 x 39 inches). They are smaller in size and lighter in weight compared to commercial solar panels. Their ...



What Are the Common Solar Panel Sizes?

Our guide on solar panel sizes covers standard dimensions, along with their power output and ideal applications.



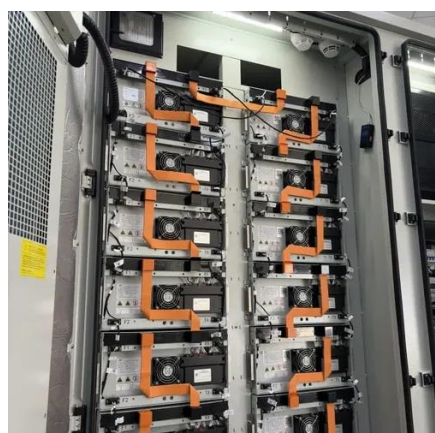
[Understanding Solar Panel Dimensions In 2025: A Complete Size Guide](#)

Q1: What are the standard dimensions of a solar panel in 2025? A1: For homes, it's about 1.7m x 1.0m. For commercial projects, around 2.0m x 1.0m. Portable panels vary widely. Q2: Do ...



[standard solar photovoltaic panel sizes explained](#)

What is the most common residential solar photovoltaic panel size I will encounter? The standard residential solar photovoltaic panel size you'll see most often is based on a 60-cell ...



Complete Guide to Solar Panel Size



60-cell solar panels are the standard solar panel size for homes. They are usually 5.5 feet by 3 feet and weigh around 40 pounds. 72-cell panels are bigger, measuring around 6.5 feet by 3 feet, weigh ...



[Solar Panel Size Guide , Best Panel Size for Your Roof](#)

When people talk about a standard solar panel size, they usually mean the typical dimensions found in the industry. Solar cells are assembled in grids, and the most common ...

[Standard Solar Panel Sizes And Wattages \(100W-500W Dimensions\)](#)

The goal here is to get to the average solar panel size by wattage. You can find typical dimensions of 100W, 150W, 170W, 200W, 200W, 220W, 300W, 350W, 400W, and 500W solar panels summarized ...





Contact Us

For catalog requests, pricing, or partnerships, please visit:

<https://www.iwap.com.pl>

Phone: +34 919 456 782

Email: info@iwap.com.pl

Scan the QR code to access our WhatsApp.

