

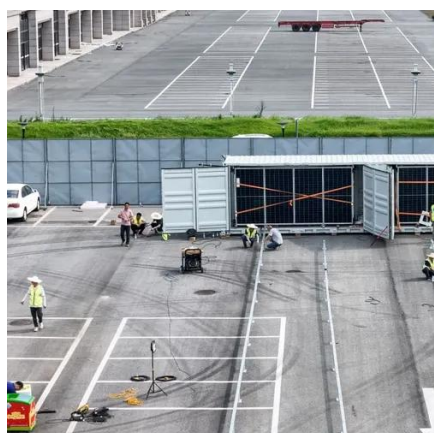


Connecting lifepo4 batteries in parallel





Connecting lifepo4 batteries in parallel



[How Many LiFePO4 Batteries Can You Put in Parallel](#)

Connecting LiFePO4 batteries in parallel allows you to increase the overall capacity of the battery system while maintaining the same voltage. This configuration is particularly useful for applications ...

[How to Connect LifePo4 Batteries in Series/Parallel \(or a combination\)](#)

But how exactly should you connect LiFePO4 batteries for optimal performance? In this guide, we'll take you through the essentials of connecting LiFePO4 batteries in series and parallel.



[Efficient Ways to Connect Lifepo4 Batteries in Parallel](#)

Connecting Lithium Iron Phosphate (LiFePO4) batteries in parallel is a process that requires technical expertise and knowledge of the correct safety protocols. This article provides an ...

[Can You Connect Two or More LiFePO4 Batteries in Parallel?](#)

Yes, you can connect two or more LiFePO4 batteries in parallel to increase capacity while maintaining the same voltage. Parallel connections are safe for LiFePO4 batteries if they share identical voltage, ...



[Series vs. Parallel: How to Correctly Connect Your](#)

...

Unlock the ultimate guide to using LiFePO4 lithium batteries in series and parallel. Learn configurations, benefits, and tips for optimal performance!

[LiFePO4 Battery Series and Parallel Connection Guide](#)

LiFePO4 batteries can be connected in series (to increase voltage) or parallel (to increase capacity). Below is a detailed breakdown of configurations, best practices, and critical ...



[How to Connect LiFePO4 Batteries Safely in Parallel or Series](#)

When batteries are connected in parallel, the voltage stays the same, but the capacities (Ah) are added. For example: Two 12V 100Ah batteries in parallel is a 12V 200Ah system. This setup ...



[LiFePO4 Lithium Batteries in Series VS Parallel Connection](#)



Parallel connection of LiFePO4 batteries involves connecting multiple cells by linking their positive terminals together and their negative terminals together to increase the overall capacity ...



LiFePO4 Battery Banks in Parallel

Wiring LiFePO4 batteries in parallel is simple. All you have to do is connect all the positive terminals together and all of the negative terminals together. There is, however, some ...

[How to Avoid Common LiFePO4 Parallel Setup Mistakes?](#)

Properly setting up LiFePO4 batteries in parallel is essential to maximize performance, safety, and battery lifespan. Common mistakes like mismatched voltages, uneven wiring, and neglecting battery ...





Contact Us

For catalog requests, pricing, or partnerships, please visit:

<https://www.iwap.com.pl>

Phone: +34 919 456 782

Email: info@iwap.com.pl

Scan the QR code to access our WhatsApp.

