



Connection on the photovoltaic support column





Overview

This study involved the analysis of a photovoltaic power generation project in Hubei Province to compare differences in the structural loads of photovoltaic supports as outlined in Chinese, American, and European codes. Enhancing the reliability of photovoltaic structures is essential for achieving sustainable development. Recent data from the National Renewable Energy Lab shows installations using adaptive racking systems achieve 18% higher annual energy. The utility model provides a single-column photovoltaic support which comprises a column, a framework, an antenna mast and an electric cabinet. At least one first clamp connecting piece is arranged on the top of the column. The selected solar panel is known as Top-of-Pole Mount(TPM), where it is designed to install quickly and provide a secure take rotational loads for 90° for safe operation.



Connection on the photovoltaic support column

[Structures and support profiles for photovoltaic modules](#)



The support structures are the elements that allow the fixing of the modules on the roofs where the photovoltaic installation must be housed, constituting a main element of the solution.

[Differences in the installation of photovoltaic support columns](#)

Its main function is the special equipment designed and installed from the solar photovoltaic power generation system to support, fix and rotate photovoltaic modules.



[Investigation of column-to-base connections of pole-mounted solar ...](#)

A total of 10 plinth types were designed, and their structural performance was investigated for different connections between the column and base of the PV solar systems under a push-over action.

[Photovoltaic panel support foundation column method](#)

In the photovoltaic (PV) solar power plant projects, PV solar panel (SP) support structure is one of the main elements and limited numerical studies exist on PVSP ground mounting steel frames to be a research gap ...



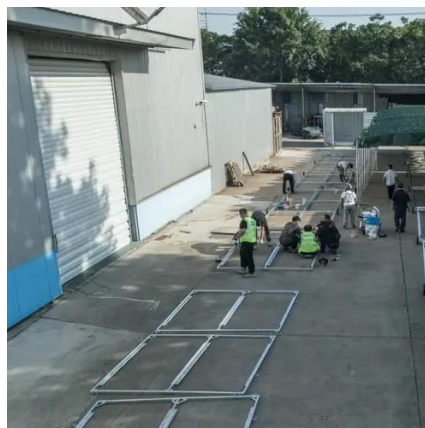
CN203896259U

The utility model provides a single-column photovoltaic support which comprises a column, a framework, an antenna mast and an electric cabinet. At least one first clamp connecting piece



Connecting the photovoltaic support column and casing

In the photovoltaic (PV) solar power plant projects, PV solar panel (SP) support structure is one of the main elements and limited numerical studies exist on PVSP ground mounting steel frames to be a research gap ...



Mechanical Performance and Stress Redistribution Mechanisms in

Based on a typical photovoltaic support failure case, this study involved detailed research on the design load and joint connection measures of photovoltaic supports.

5 Easy Steps to Generate and Design Solar Panel Structures



The geometry generator in Graitec Advance Design supports nine types of solar panel structures, from single-column systems to multi-column configurations with horizontal bracing.



[Flexible Photovoltaic Support Column Installation Diagram: Your](#)

Start by identifying the "sweet spots" in your layout. The 2023 SolarWorld Conference revealed that proper spacing between columns increases airflow and reduces panel overheating by up to 15°F. Use these ...

[Photovoltaic support column cross-connection](#)

A photovoltaic bracket comprises a support component, wherein the support component is composed of at least two support structures; the rope assembly consists of three ropes which





Contact Us

For catalog requests, pricing, or partnerships, please visit:

<https://www.iwap.com.pl>

Phone: +34 919 456 782

Email: info@iwap.com.pl

Scan the QR code to access our WhatsApp.

