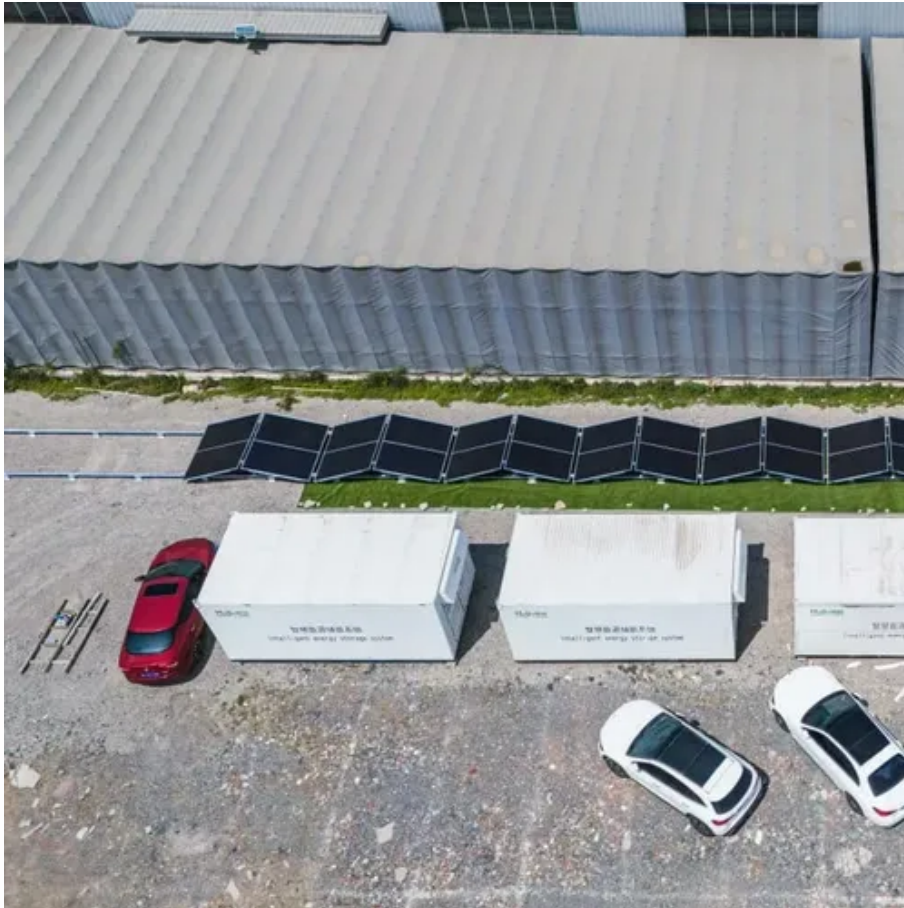




Difference between 72-cell and 78-cell solar modules





Overview

The 72 - cell modules have a similar design to the 78 - cell ones but with a different cell count. 60-cell and 72-cell panels can be used in rooftop installations, ground mounts, carports, and more. Call (877) 297-0014 for wholesale price and availability. What's the difference between a 60-cell and 72-cell solar panel?

Popular for commercial and ground-mounted installations, 72-cell. The standard residential solar photovoltaic panel size you'll see most often is based on a 60-cell configuration, typically measuring about 67 inches long by 40 inches wide. This size offers the best balance between power output, handling ease, and fitting standard roof dimensions. Are commercial. 36 cells Vs 60 cells Vs 72 cells Vs 144 cells Solar Panels "In the market, you'll find various types of solar panels, both large and small. However, you might not know which solar panel would be beneficial for you.



Difference between 72-cell and 78-cell solar modules



[60 Cell vs. 72 Cell Solar Panels: Which is Right For You?](#)

Today, most people install either 60 or 72 cell solar panels for their installation- but what's the difference between the two, and which option is best for your installation?

[60 Cell Vs 72 Cell Solar Panels . How Do I Differ Them](#)

The core difference comes down to power density - 72 cell panels can generate more kilowatts per panel. However, 60-cell options tend to be more affordable upfront. Ultimately, you'll need to balance ...



[36 cells Vs 60 cells Vs 72 cells Vs 144 cells Solar Panels](#)

In the market, you generally find a higher prevalence of 72-cell solar panels. However, those solar panels that come in a half-cut configuration are referred to as 144-cell solar panels.



[standard solar photovoltaic panel sizes explained](#)

Are commercial solar photovoltaic panel sizes different from residential ones? Absolutely--commercial and utility projects often use larger 72-cell or 96-cell solar photovoltaic panel ...



[Exploring Solar Panel Technology: 60, 72, and 96 Cell Panels Compared](#)

72-cell solar panels are better suited for commercial installations, offering higher power output and measuring approximately 3.25 feet by 6.42 feet. 96-cell panels provide the highest efficiency but can ...



[60 cells or 72 cells solar panels: Which is better?](#)

When we look at their size, we see that 72-cells solar panels are taller than the 60-cells solar panels. We find that the 72-cells solar panels are 19.6% taller than their counterparts while the ...



72 Cell Solar Panels

A 72-cell solar panel will typically have a higher voltage, weigh more and of course have a longer length than their 60-cell counterparts. These solar panels are available with monocrystalline and ...



Are 78 Half



First off, let's talk about what makes the 78 Half - cell Dual - wave Modules unique. These modules are designed with a half - cell structure, which has several advantages. The half - cell ...



[Pros and Cons of 60-cell & 72-cell Solar Modules](#)

Cost, aesthetics, warranty, efficiency, and durability should all be taken into account when selecting the right PV panels. In this article, we'll discuss some differences between 60-cell solar ...

[60-Cell VS 72-Cell Solar Panels: Complete Comparison Guide](#)

Compare 60-cell vs 72-cell solar panels. Learn key differences in size, power output, cost, and installation to choose the right configuration for your home.





Contact Us

For catalog requests, pricing, or partnerships, please visit:

<https://www.iwap.com.pl>

Phone: +34 919 456 782

Email: info@iwap.com.pl

Scan the QR code to access our WhatsApp.

