



Difference between photovoltaic glass front panel and back panel





Overview

The front glass layer is designed to capture sunlight as it does in a traditional monofacial module, while the back glass layer allows for the reflection of sunlight onto the rear-side PV cells. Both play unique roles in energy conversion, durability, and system efficiency. This article breaks down their differences, applications, and why choosing the right material matters for. To successfully differentiate between the front and back of a solar back panel, it is essential to recognize several key features and characteristics inherent to each side. A basic bifacial module typically consists of a front-side photovoltaic (PV) layer and a back-side PV layer, with no. Bifacial glass technology is the preferred material among manufacturers for the rear side cover of the modules. However, glass-glass models.



Difference between photovoltaic glass front panel and back panel



[Photovoltaic Glass vs Back Panel: Key Differences and Applications in](#)

When designing solar panels, two critical components often spark debates: photovoltaic glass and back panels. Both play unique roles in energy conversion, durability, and system efficiency. This article ...

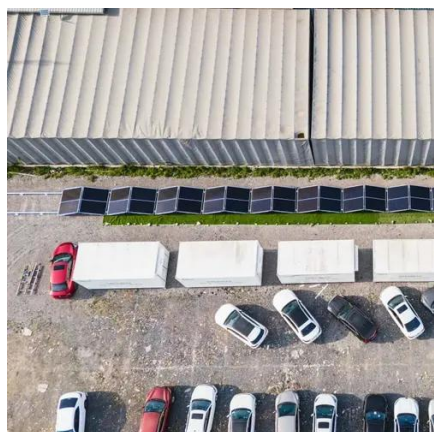
[Choose Right: Bifacial vs Glass-Glass Solar Panels Decision Guide](#)

This guide provides clear decision frameworks for choosing between bifacial's energy gains, glass-glass's durability, or custom solutions when standard panels won't work.



[How to distinguish the front and back of solar back panel](#)

To successfully differentiate between the front and back of a solar back panel, it is essential to recognize several key features and characteristics inherent to each side.



[What Are the Main Components of Solar Panels? A Structural ...](#)

Solar panels are not a single functional element, but modules composed of multiple structural units. Each component plays a distinct role in optical protection, electrical energy ...



ESS



[Are Glass-Glass PV Modules Right for Your Project? How to Choose?](#)

Compared to single-glass PV modules, glass-glass PV modules deliver superior performance and longer service life. Learn more about their advantages, key purchasing ...

[The Difference Between Bifacial Module and Double Glass Bifacial ...](#)

In summary, the primary difference between a bifacial module and a double glass bifacial module is the presence of glass on both sides in the latter, which provides improved durability and ...



[What are the differences between glass-backsheet and glass-glass PV](#)

A traditional glass-backsheet module is constructed with a sheet of tempered glass on the front and a durable polymer-based backsheet on the rear. This has been the industry standard for decades.



[Glass-to-Transparent Backsheet vs. Glass-to-Glass Solar](#)



Two popular configurations are glass-to-transparent backsheet and glass-to-glass solar modules. Each has its own unique features, advantages, and trade-offs that cater to specific



[Dual-glass vs glass-backsheet: The winning formula for bifacial ...](#)

Compared with standard glass backsheet technology, framed modules with two layers of glass are heavier. Therefore, transparent backsheets are a solution for a lighter bifacial module. A ...



Contact Us

For catalog requests, pricing, or partnerships, please visit:

<https://www.iwap.com.pl>

Phone: +34 919 456 782

Email: info@iwap.com.pl

Scan the QR code to access our WhatsApp.

