



Dimensions of a 580W solar panel





Overview

JA Solar's 580-605W solar panel features a mechanical diagram, specifications, and key details such as dimensions (2465+2mm x 1134+2mm x 35mm), weight (31.1kg, 3%), cable cross-section size (4mm or IEC 12 AWG UL), 156 mono cells with 6x26 configuration, grounding holes . *The regular product warranty is 15 years, please refer to the latest version of AESOLAR Limited Warranty for the duration of the product warranty under special conditions. for extensions, please contact AESOLAR staff. Ø 25 mm at 23 m/s Wind load Snow load -0. Better light trapping and current collection to improve module power output and reliability. Excellent Anti-PID performance guarantee via optimized mass-production process and materials control. Module power increases 5-25% generally, bringing significantly lower LCOE and higher IRR. SolarSpace engineers made the SS8-72HD-N series durable and efficient while minimizing the amount of useful space required for their operation. This panel is. - A glass-glass mechanical structure that is extremely durable, with a 25-year quality warranty and 30-year power guarantee. Free shipping on orders over \$50! The 580W TOPCon Black Frame Solar Panel, measuring 2278 x 1134 x 35mm, offers exceptional performance. Dual-glass construction makes it.



Dimensions of a 580W solar panel

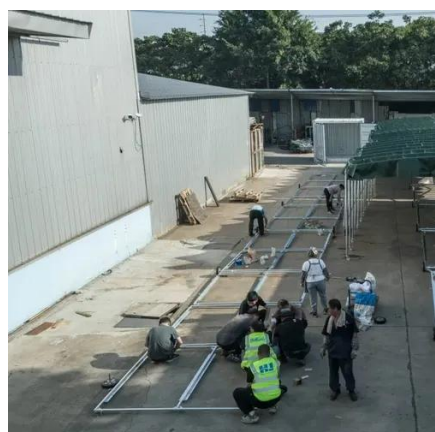


[Solar panels 580W - TrinaSolar Vertex TSM-DE19R 575-580W HalfCell](#)

Designed with efficiency and performance in mind, these panels boast a power output of 580W, making them ideal for various residential, commercial, and industrial applications.

[SolarSpace 580W N-Type Bifacial Solar Panel SS8-72HD-580](#)

Built with advanced N-Type monocrystalline cell technology, this 580W module delivers strong front-side output with improved resistance to light-induced degradation. N-Type cells are designed to maintain ...



SOLAR PANEL

With a super strong frame design accounting for 10% increased strength and a system voltage of 1500V, this solar panel ensures stability, reliability, and efficiency for long-term energy ...

[SolarSpace 580W Solar Panel 144 Cell Bifacial SS8-72HD-580N](#)

SolarSpace made solar cells in SS8-72HD-580N two times smaller than the standard size, thus reducing power loss and improving low-light behavior. As a result, the panel achieves an ...



Jinko 580w Solar Panel

The Jinko 580w panel is a prime example of this quality, with a dimensions of 2278×1134×35mm 2278×1134×35mm (89.69×44.65×1.38 inch) and an efficiency rate of up to 22.45%. This panel is ...



Dimensions of 580w photovoltaic panels

The 580W TOPCon Black Frame Solar Panel, measuring 2278 x 1134 x 35mm, offers exceptional performance. Dual-glass construction makes it ideal for flat roof and ground-mount



AE_ME-120BS_580W-600W_Ver24.5.1

The specifications and characteristics contained in this datasheet may deviate slightly from our actual products due to the product developments and uncertainty of measurement devices. The ...



JKM560-580N-72HL4-BDV-F6-EN



Specifications included in this datasheet are subject to change without notice.



Lithium battery parameters

Product capacity: 100Ah

Product size: 135*197*35mm

Product weight: 1.82kg 197mm / 7.7in

Product voltage: 3.2V

internal resistance: within 0.5



580 Watt Black Frame Solar Panel

The 580W TOPCon Black Frame Solar Panel, measuring 2278 x 1134 x 35mm, offers exceptional performance. Dual-glass construction makes it ideal for flat roof and ground-mount photovoltaic ...

[Jinko Solar 580W 144 Half-Cell 1500V N-Type ...](#)

JKM580N-72HL4-BDV.30JK Catalog #
JKM580N-72HL4-BDV.30JK Dimensions 2278 L x 1134 W x 30 H mm Weight 68.34 Lbs.





Contact Us

For catalog requests, pricing, or partnerships, please visit:

<https://www.iwap.com.pl>

Phone: +34 919 456 782

Email: info@iwap.com.pl

Scan the QR code to access our WhatsApp.

