



Distance from photovoltaic line to inverter

Outdoor Cabinet BESS
50 kWh/500 kWh Battery Storage System
Industrial and Commercial Energy Storage

- All In One**
Integrating battery packs
- High-capacity**
50 - 500kWh
- Degree of Protection**
IP54
- Operating Temperature Range**
-20~60°C (Derating above 50 °C)
- Intelligent Integration**
integrated photovoltaic storage cabinet
- Rated AC Power**
50 - 100kW
- Altitude**
3000m (>3000m derating)





Distance from photovoltaic line to inverter



[How Far Can Solar Panels Be from an Inverter? What You Should ...](#)

Want to know the ideal distance between your solar panels and inverter? Learn about the recommended distance, the consequences of exceeding it, and solutions for long cable runs.

[Maximizing Efficiency: How Far Can You Run Solar Panel Wires?](#)

The distance between the panels and the inverter is critical, as longer distances can lead to energy losses. To calculate the maximum distance you can run your solar panel wires, you can ...



[Distance Limitations for Solar Panels: A...](#)

Comprehensive analysis of solar panel distance limits: Learn wiring impacts, efficiency tips, and installation strategies for optimal energy output.

[How Far Can Solar Panels Be From Inverter](#)

The distance between these components can significantly impact the overall efficiency of the system. When determining how far away solar panels can be from the inverter, we must consider ...



[How Far Can Solar Panels Be From Inverter](#)

Ideally, solar panels should be as close to the inverter and charge controller as possible. In situations where the panels are roof-mounted, this typically translates to anywhere between 20 ...



[Optimizing Solar Panel Distance from Inverter - A](#)

...

This guide covers factors affecting solar panel and inverter distance, wire types, efficiency implications, power loss, and practical recommendations.



[How Far Can Solar Panels Be from the Inverter? A Guide to ...](#)

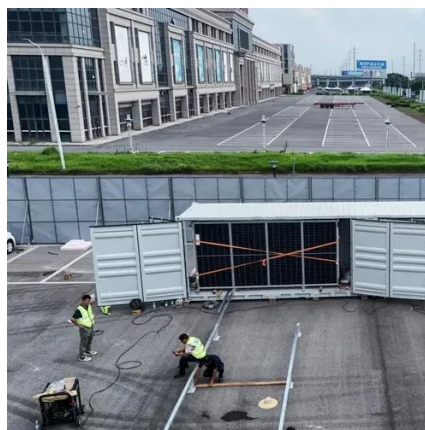
When designing a solar power system, it is crucial to optimize the distance between solar panels and the inverter to ensure maximum efficiency and output. Ideally, solar panels should be as ...



[Solar Panel Inverter Distance: How Far Can They Be from Your ...](#)



By carefully planning the distance between your solar panels and inverter and opting for high-voltage systems, you can enhance the overall efficiency of your solar energy setup, ensuring better ...



[Distances from panels to inverter , DIY Solar Power Forum](#)

With high voltage dc used on modern solar systems the distance between panels and inverters can be quite far 100s feet possible. Inverters and batteries should be close to the house to ...

[Optimal Distance Between Inverter and PV Panels: Key Factors for ...](#)

Summary: The distance between solar inverters and photovoltaic (PV) panels directly impacts system performance, energy loss, and installation costs. This guide explores best practices, technical ...





Contact Us

For catalog requests, pricing, or partnerships, please visit:

<https://www.iwap.com.pl>

Phone: +34 919 456 782

Email: info@iwap.com.pl

Scan the QR code to access our WhatsApp.

