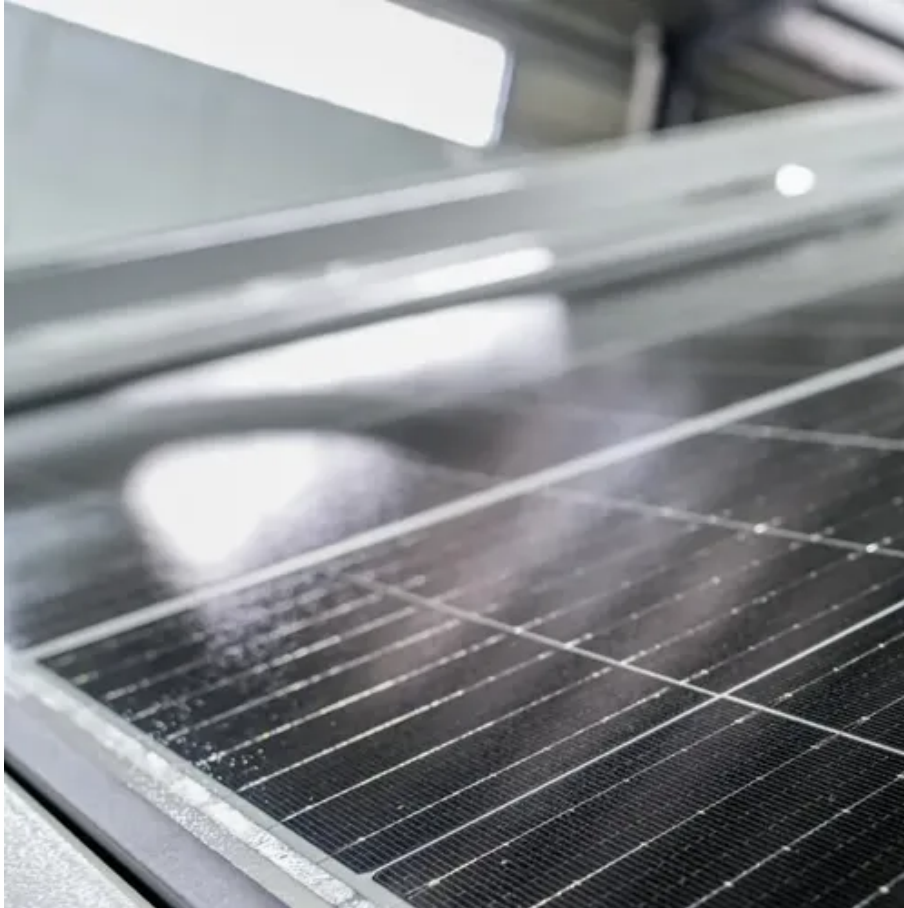




Electricity regulations lesotho





Overview

A website of the Department of Energy (DoE) in Lesotho with an Energy Management Information System (EMIS). The website gives all information about renewable energy, electrification generation, transmission and consumption, petroleum, energy efficiency, solar, bio-energy . The following Regulations and Rules whose purposes are indicated below form part of the subsidiary legislation. Subsidiary legislation is developed in compliance of and in conformity with the enabling law. © 2026 DoE, All rights reserved. While the country has made notable progress in expanding access to electricity, achieving universal energy access remains a key priority. LEWA was established by an act of parliament, the Electricity and Water Authority Act Number 12 of 2002. Clarity of Roles LEWA's regulatory functions are set out clearly in the primary. , where a person refuses or fails to comply with any compliance order issued by a competent authority; and li ma be necessary for the effective p ne gy; and midstream and downstream activities for p ubject to the provisions of this Act, of performing such acts as a body cor a ts y exercise all. The objective of the code is to provide for planning, operation and connection standards to the grid with clear rules and regulations of the electricity system operator, users and new entrants.



Electricity regulations lesotho



[Lesotho Electricity Authority Act \(No. 12 of 2002\).](#)

This Act establishes the Lesotho Electricity Authority and defines its functions and powers and provides with respect to its administration and internal organization.

Energy

To become an energy self-sufficient nation with sustainable, affordable and universally accessible energy, while minimising negative impact on the environment and creating intergenerational value.



Rules and Regulations

The following Regulations and Rules whose purposes are indicated below form part of the subsidiary legislation. Subsidiary legislation is developed in compliance of and in conformity with the enabling law.

Policies and Regulations

The Department of Energy in Lesotho operates under a framework of policies and regulations designed to ensure sustainable, affordable, and universally accessible energy for all citizens.



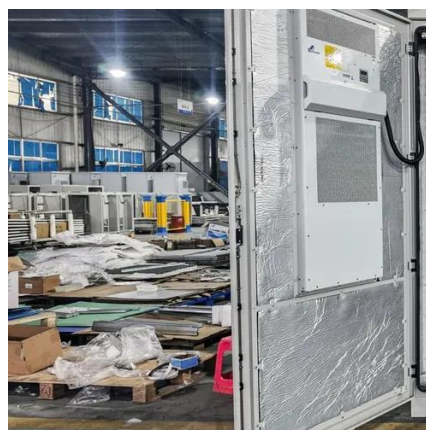
[Codes - Lesotho Electricity and Water Authority](#)

We provide authoritative oversight and guidance on all electricity, urban water, and sewerage services



[Fueling the Future: Inside Lesotho's New Energy Bill](#)

In essence, the Energy Bill moves Lesotho beyond a patchwork of outdated regulations toward a holistic, forward-looking legal regime. With clear institutional roles, market-based rules, and ...



[NATIONAL ENERGY COMPACT FOR THE KINGDOM OF ...](#)

Through this Compact, Lesotho reaffirms its commitment to advancing sustainable energy development, improving access to modern energy services and ensuring that no one is left behind on the journey ...



Lesotho , Africa Energy Portal



There is an Electrification Access Fund in place for enhancing access to electricity and all consumers are levied to contribute to the Fund. There is no formal regulatory mechanisms to support electrification.

FLEXIBLE SETTING OF MULTIPLE WORKING MODES



[THE ENERGY BILL, 2024 A Bill for and gas activities; regulation ...](#)

(3) The public transmission entity shall be responsible for administering the electricity market trade under the supervision of the Regulator and shall implement the electricity market rules issued by the ...

[Lesotho Advances Energy Access with New Mini-Grid Regulation](#)

Lesotho is expanding energy access through a new mini-grid regulation that promotes private investment, strengthens rural electrification, and supports sustainable development across ...





Contact Us

For catalog requests, pricing, or partnerships, please visit:

<https://www.iwap.com.pl>

Phone: +34 919 456 782

Email: info@iwap.com.pl

Scan the QR code to access our WhatsApp.

