



Emergency Fire Communication Green Base Station





Overview

Quick answer: An in-building emergency responder communication enhancement system is required by the 2024 edition of NFPA 1, Fire Code, when the radio signal strength within 95 percent of the general floor area and 99 percent of critical floor area is not sufficient to provide. Quick answer: An in-building emergency responder communication enhancement system is required by the 2024 edition of NFPA 1, Fire Code, when the radio signal strength within 95 percent of the general floor area and 99 percent of critical floor area is not sufficient to provide. Quick answer: An in-building emergency responder communication enhancement system is required by the 2024 edition of NFPA 1, Fire Code, when the radio signal strength within 95 percent of the general floor area and 99 percent of critical floor area is not sufficient to provide a delivered audio. Opticom™ IntelliGreen combines reliable, mission-critical performance with interoperability and scalability for superior traffic priority control. Positioned at intersections near fire stations, it incorporates patented, intelligent radio/GPS technology to quickly preempt traffic control lights for. Discover how Drone as First Responder (DFR) technology delivers rapid aerial intel, improves response times and supports safer outcomes for public safety teams. We make devices that perform exceptionally in the harshest conditions, so you can stay connected and communicate clearly. Motorola. Emergency personnel can preempt signals for one or more directions of traffic from the Opticom™ IntelliGreen unit. Opticom. An In-Building Emergency Responder Communications Enhancement System (ERCES) is a wireless communications system used by first responder and emergency services personnel, such as police, fire, emergency medical, homeland security, and disaster response agencies. Fire Administration, “Safety and Health Considerations for the Design of Fire and Emergency Medical Services Stations” which is in the public domain. This report was developed through a cooperative research agreement between the U. Fire Administration (USFA).



Emergency Fire Communication Green Base Station



[Movable Base Stations in Mobile Networks for Emergency ...](#)

An emergency communication system is necessary for first responders, who need to enter areas with no network coverage or damaged network infrastructure due to n

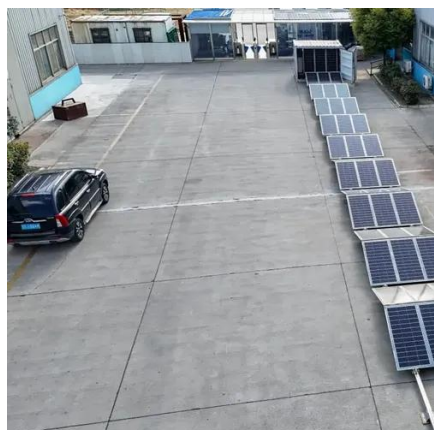
[GTT Opticom IntelliGreen Priority Control for Fire Stations](#)

Intuitive, reliable priority control Signal triggered by emergency personnel or alarm system located in fire station (base unit offers choice for signal preemption at one or more intersections). The wireless ...



[WHO launches US\\$ 1.5 billion Health Emergency Appeal to ...](#)

In response, the World Health Organization (WHO) is calling for US\$ 1.5 billion for its 2025 Health Emergency Appeal (HEA), to support life-saving health interventions worldwide.



Public Safety Primer

An ARCS is a wireless two-way building communication system for Fire Department use only that receives and transmits Fire Department portable radio frequencies within the building.



[Nepal strengthens emergency care systems with WHO's Global ...](#)

Nepal has made significant strides in enhancing its emergency health-care systems by implementing the World Health Organization's (WHO) Global Emergency and Trauma Care ...

IntelliGreen

Positioned at intersections near fire stations, it incorporates patented, intelligent radio/GPS technology to quickly preempt traffic control lights for faster, safer response.



[ERRC DAS for Public Safety Communication, Newbridge Wireless](#)

Newbridge Wireless provides NFPA- and IFC-compliant ERRC DAS solutions to keep your building's emergency communication system up to code and ready when it matters most.

Health emergencies



I Emergency Operations I Emergency Preparedness Health Security Preparedness The Health Security Preparedness mission is to enable countries to apply evidence-based data and ...



Basic Emergency Care

The Basic Emergency Care Course (BEC) is a joint WHO/ICRC/IFEM learning programme for first contact health workers who care for patients with acute illness or injury. BEC teaches a ...

[Designing Fire And EMS Stations: A Comprehensive Guide](#)

Fire and emergency services organizations have two methods for justifying the need for a new station that are based on service delivery and response time. The first method is time and distance.



[When Emergency Responder Communication Enhancement Systems ...](#)

Because of this, building and fire codes require that buildings be evaluated to ensure that the building construction will not interfere with radio communications, and if it does, special systems ...

WHO's Health Emergency Appeal 2025



WHO's health emergency appeal identifies the critical priorities and resources required to address 42 ongoing health emergencies, including 17 Grade 3 crises - the most ...



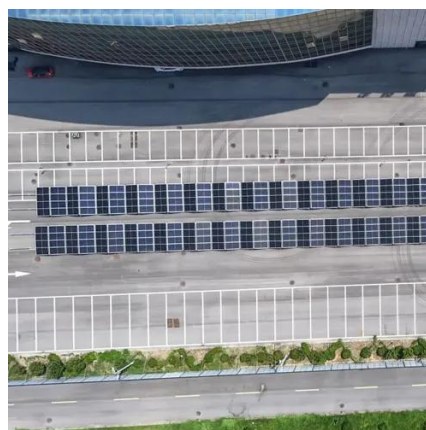
[World Health Organization Emergencies Programme](#)

National health emergency alert and response framework This multi-hazard Health Emergency Alert and Response Framework provides guidance for coordinating emergency ...



Emergency care

Emergency care is powerfully aligned with the primary health care agenda as it provides first contact clinical care for those who are acutely ill or injured. Pre-hospital and ...



WHO's Health Emergency Appeal 2025

Increasingly intense and prolonged humanitarian crises require urgent action to protect the world's most vulnerable. In 2025, an estimated 305 million people will require ...



Fire Communications



Describe the purpose and uses of department computers, cell phones and landlines. This section covers the communication principals and equipment that are utilized during emergency and non-emergency ...



[Progress on emergency, critical and operative care](#)

WHA 76.2 "Integrated emergency, critical and operative care for universal health coverage and protection from health emergencies," passed with unanimous support during the ...



[How departments use this system to improve fire station communication](#)

Calls transmitted via IP-based alerting are typically received in less than one second, and fire crews can be alerted in three different ways - over the station network using the Phoenix G2



[Fourth meeting of the International Health Regulations \(2005\) ...](#)

Concurring with the advice unanimously expressed by the Committee during the meeting, the WHO Director-General determined that the upsurge of mpox 2024 continues to ...



[Firefighter & EMS Radios: Solutions for First Responders](#)



From first alert to final dispatch and acknowledgment, our technology and solutions help improve your station's speed, efficiency and safety of your first responders.





Contact Us

For catalog requests, pricing, or partnerships, please visit:

<https://www.iwap.com.pl>

Phone: +34 919 456 782

Email: info@iwap.com.pl

Scan the QR code to access our WhatsApp.

