



# External communication base station wind power





## Overview

---

The wind/PV/storage power supply system for communication base station groups can not only effectively integrate wind and photovoltaic power but also achieve energy scheduling and mutual assistance among various wind/PV/storage power supply systems within. The wind/PV/storage power supply system for communication base station groups can not only effectively integrate wind and photovoltaic power but also achieve energy scheduling and mutual assistance among various wind/PV/storage power supply systems within. 5G base stations (BSs), which are the essential parts of the 5G network, are important user-side flexible resources in demand response (DR) for electric power system. Improved Model of Base Station Power System for the. The optimization of PV and ESS setup according to local conditions has a. Under the “dual carbon” goals, enhancing the energy supply for communication base stations is crucial for energy conservation and emission reduction. An individual base station with wind/photovoltaic (PV)/storage system exhibits limited scalability, resulting in poor economy and reliability. To. The invention provides a communication base station, which comprises: the omnidirectional antenna is fixedly arranged on the wind driven generator and is electrically connected with an internal circuit of the wind driven generator; the wind driven generator provides a vertical mounting support for. The Large-scale Outdoor Communication Base Station is a state-of-the-art, container-type energy solution for communication base stations, smart cities, transportation networks, and other crucial edge sites. If all of the channel capacity of a BS is occupied, a user cannot access this BS and must instead access another BS that is farther away. Can. The telecommunication services included in this review are those that have demonstrated to be more sensitive to nearby wind turbines: weather, air traffic control and marine radars, radio navigation systems, terrestrial television and fixed radio links. How can wind energy help a telecom tower?



## External communication base station wind power

---



### [Wind power construction of communication base stations](#)

We investigate the use of wind turbine-mounted base stations (WTBSs) as a cost-effective solution for regions with high wind energy potential, since it could replace or even outperform

### [What type of wind turbine should be selected for communication base](#)

In summary, communication base stations should be equipped with wind turbines that offer strong wind resistance, moderate power output, high stability and reliability, as well as durability and ease of ...



### [SMALL TELECOMMUNICATION BASE STATION WIND POWER AND](#)

Cd-05 wireless communication base station battery The voltage of this series of batteries is 48V, and it is suitable for the backup power supply of various communication equipment, such as base stations, ...

### [The connection between communication base station and ...](#)

Discover how hybrid energy systems, combining solar, wind, and battery storage, are transforming telecom base station power, reducing costs, and boosting sustainability.



### CN111836120A

The invention relates to the technical field of communication, in particular to a communication base station.



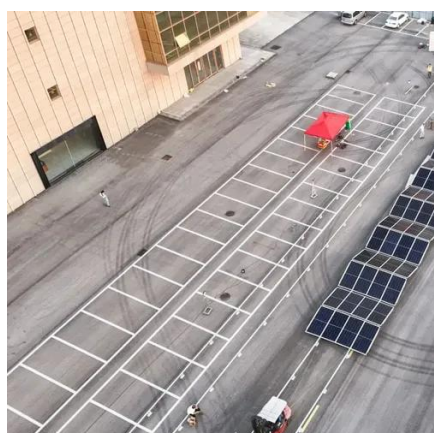
### Research on Capacity Optimization Configuration of Wind/PV

An individual base station with wind/photovoltaic (PV)/storage system exhibits limited scalability, resulting in poor economy and reliability. To address this, a collaborative power supply ...



### Large-scale Outdoor Communication Base Station, Reliable

Discover the Large-scale Outdoor Communication Base Station, designed for smart cities, communication networks, and power systems. Integrated with solar, wind, and energy storage ...



### Wind-solar hybrid for outdoor communication base stations



Integrated Solar-Wind Power Container for Communications This large-capacity, modular outdoor base station seamlessly integrates photovoltaic, wind power, and energy storage to provide a stable ...



### [New base station for wind power communication](#)

Our study introduces a communications and power coordination planning (CPCP) model that encompasses both distributed energy resources and base stations to improve communication quality ...

### [Near and far points of wind power for communication base stations](#)

Wind power is one of the fastest-growing technologies for renewable energy generation. Unfortunately, in the recent years some cases of degradation on certain telecommunication systems have arisen.





## Contact Us

---

For catalog requests, pricing, or partnerships, please visit:

<https://www.iwap.com.pl>

Phone: +34 919 456 782

Email: [info@iwap.com.pl](mailto:info@iwap.com.pl)

Scan the QR code to access our WhatsApp.

