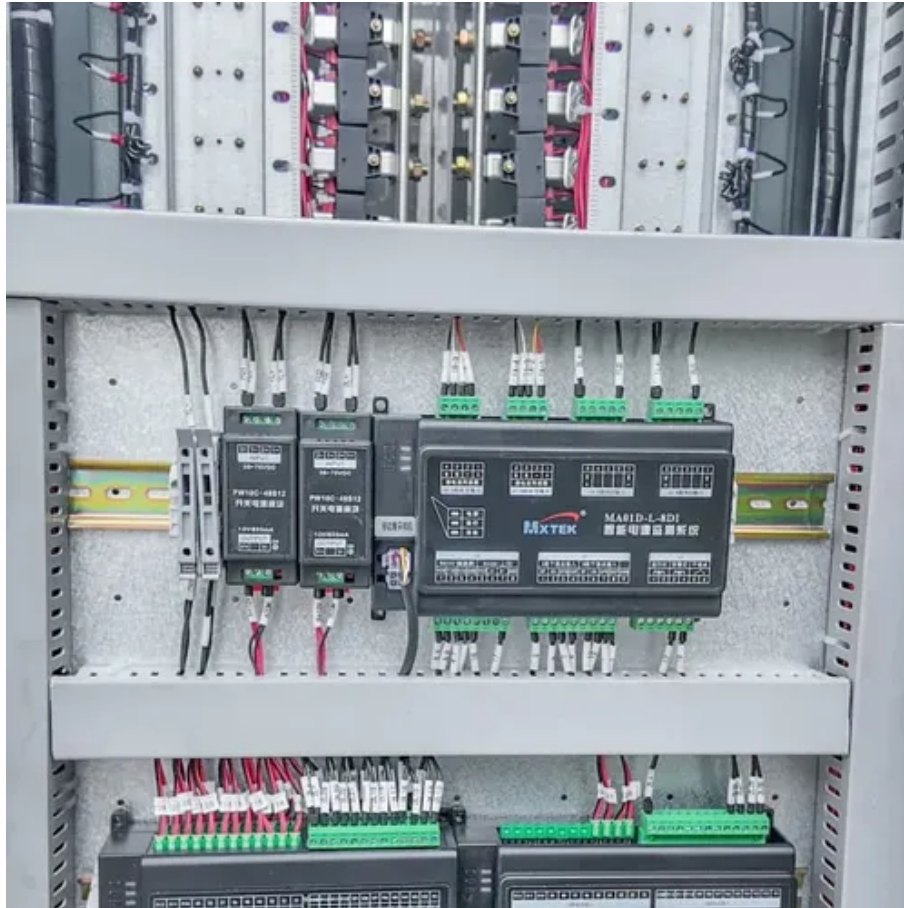




Fengjun 7 generator fault code





Overview

Reset the controller and restart the generator. If the generator does not start after two automatic attempts, please check to ensure the gas to your generator is turned on. If your handle is lined across the pipe, the , or a malfunctioning governor. These codes are typically displayed as a combination of letters and numbers and can be easily deciphered by outage after crank disconnect. Discover what Kohler Generator Code 21 means, its common causes, and how to fix it. Get quick troubleshooting tips to resolve this error and keep your. When your generator displays an error code, it's trying to tell you something. Generators are built to provide reliable backup power, but occasional issues can arise.



Fengjun 7 generator fault code



[Error Code MTU ADEC ECU 7 , PDF , Power Supply , Coolant](#)

The document discusses fault codes and messages that may appear on the SAM display for genset applications. It provides a table that lists possible fault codes, their designations, meanings, ...

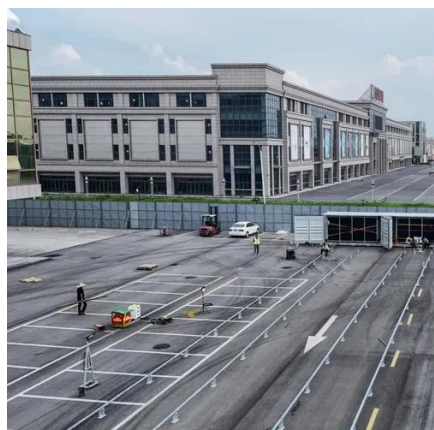
Understanding Generator Error Codes

Generator giving you an error code? We explain what they mean and how you can resolve it in this guide. Read more about generator error codes here.



[How to disassemble and assemble the Fengjun 7 generator](#)

How to disassemble and assemble the Fengjun 7 generator. Because when you need your Generator, you need it working now! The guide will take you step-by-step to get it fixed fast! Includes ...



[Common Generator Fault Codes & What To Do](#)

The fault lamp illuminates yellow and the alarm horn sounds when the battery voltage drops below a preset level for more than 90 seconds. The local display shows Low Battery Warning.



Fengjun 7 generator fault code

To solve the fault code 37 on Onan generator, just check and follow the steps below: - Step #1: Check Summer/Winter Setting - Step #2: Check Regulator for Altitude - Step #3: Check



[Most Common Generator Error Codes & Meanings . Hoffmann Brothers](#)

Discover what SPN 157 FMI 7 error code means for your Cummins generator, including common causes and step-by-step fixes. Resolve the issue quickly with our expert guide.



Generator Error Codes

When they do, your generator will display an error code to help diagnose the problem. Below, we've outlined common Kohler, Generac, and Cummins generator error codes, what they mean, and how ...



[Where can I find a list of portable generator fault codes and basic](#)



This article provides a guide to portable generator fault codes, their meanings, and basic troubleshooting. It discusses the function of the Malfunction Indicator Lamp (MIL), shut-down fault ...



UNDERSTANDING GENERATOR ERROR CODES

Reset the controller and restart the generator. If the generator does not start after two automatic attempts, please check to ensure the gas to your generator is turned on.

Fengjun 7 generator fault code

Some of the most common codes and their meanings include: This fault code indicates that the generator is running at a frequency that is too low. This may be caused by a variety of issues, ...





Contact Us

For catalog requests, pricing, or partnerships, please visit:

<https://www.iwap.com.pl>

Phone: +34 919 456 782

Email: info@iwap.com.pl

Scan the QR code to access our WhatsApp.

