



GCL 455w photovoltaic panel size





Overview

The GCL 450W photovoltaic panel size measures 2,172mm × 1,303mm × 35mm (about 85.4"), making it slightly larger than your average 400W panel but packing 12. See the table below for available information we have about GCL System Integration Technology Co. GCL-NT12R/48GDF-455 solar panels. Think of it like upgrading from economy to premium economy - same basic shape, but way more legroom for energy. >Excellent UV resistance and aging resistance. >Made-to-order backsheet with width up to 1300mm. >Unique split junction box design to minimize the loss caused by. 455W Monocrystalline Solar Panel is 455W monocrystalline module with 144 (6×24) cells. Designed for commercial and industrial applications, this panel utilizes A Grade mono PERC cells and robust anodized aluminum framing, ensuring.



GCL 455w photovoltaic panel size



[Gcl 455W 450W 445W 166mm Solar Panels Silicon Material High ...](#)

Brand Name: GCL Solar Model Number: GCL-M8-450W-72H Place of Origin: Anhui, China Cell size: 166mmx166mm Type: PERC, Half Cell Panel Dimensions: 2108*1048*35MM Panel Efficiency: 20.4% ...

[GCL-NT12R/48GDF-455 455W Solar Panel Information](#)

We have an image for GCL System Integration Technology Co. Ltd. GCL-NT12R/48GDF-455 - See below for a reference of what this panel may look like (can differ depending on date and manufacturer).



455W 48v Solar Panel

Its anodized aluminum frame makes it easily applicable to coplanar structures, its dimensions are 2094 X 1038 X 35 mm and its weight is 23.8kg. It incorporates the necessary connections for connection, ...

[Monocrystalline solar panel NT12R/48BGDF GCL-NT12R/48BGDF ...](#)

Technical Datas Module Type:GCL-NT12R/48BGDF
455W Maximum Power (Pmax):455W Open-



Canadian_Solar-Datasheet

Please be kindly advised that PV modules should be handled and installed by qualified people who have professional skills and please carefully read the safety and installation instructions before using our ...



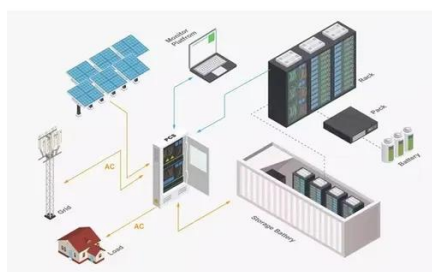
[GCL Solar Module 440w 445w 450w 455w 460w Solar Panels ...](#)

Type: PERC, Half Cell Panel Dimensions: 2108*1048*35mm Certificate: CE Warranty: 25 years Product name: GCL Solar Module Solar cell: Monocrystalline Junction Box: IP68 Rated Frame: Anodized ...



455W 48v Solar Panel

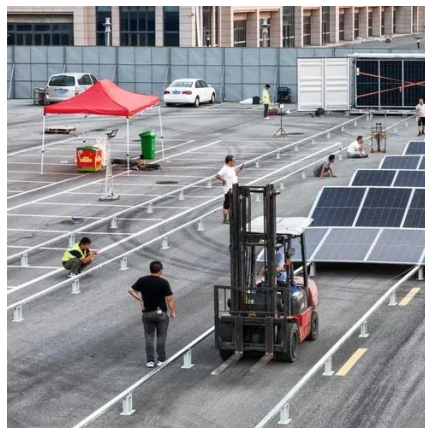
Its anodized aluminum frame makes it easily applicable to ...



[GCL System Integration Technology Co. Ltd. Solar Panel Information](#)



See the table below for available information we have about GCL System Integration Technology Co. Ltd. solar panels. We do our best to provide information such as the panel dimensions, datasheet, ...



[Tier 1 Brand Gcl Longi 440W 450W 455W Half Cell Mono Solar Panel ...](#)

Our company's solar panel 390 w, Half Cell Module, 320w solar cell are not only rich in categories, but also of high quality. We have a good reputation among new and old customers.

[GCL 450W Photovoltaic Panel Size: What You Need to Know Before](#)

The GCL 450W photovoltaic panel size measures 2,172mm x 1,303mm x 35mm (about 85.5" x 51.3" x 1.4"), making it slightly larger than your average 400W panel but packing 12.5% more power.



[Yingli GCL 440w 445w 450w 455w Solar Panel Photovoltaic 166mm ...](#)

Premium Material Quality: Built with A Grade 166mm mono PERC solar cells and a robust anodized aluminum alloy frame, this solar panel ensures durability and longevity even under harsh ...





Contact Us

For catalog requests, pricing, or partnerships, please visit:

<https://www.iwap.com.pl>

Phone: +34 919 456 782

Email: info@iwap.com.pl

Scan the QR code to access our WhatsApp.

