



# Generator exhaust shaft dimensions





## Overview

---

Select pipe diameter: Aim for gas velocity between 20–35 m/s. Lower velocities reduce noise but require larger pipe. Provide factory-built exhaust system that is tested, listed and labeled by the Underwriters' Laboratories, Inc. for use with burning gas or liquid as described in NFPA-37 and NFPA-211, which produce exhaust flue gas temperatures not exceeding 1400oF under continuous operating conditions. Modular pre-engineered chimney systems that are factory-fabricated and UL listed have eliminated the need for field-welded. PowerStack is a state-of-the-art twin-walled exhaust system designed to convey power generator exhaust. 22 internal diameters ranging from 4 inch (100mm) to 48 inch (1200mm). Outer jacket of 304 polished stainless steel. Low points in horizontal runs of piping should be provided with condensation traps, as well as condensation drains. offers silencers rated for hospital, critical, residential, and industrial applications and stainless steel flexible exhaust connectors for unboxed generator sets.



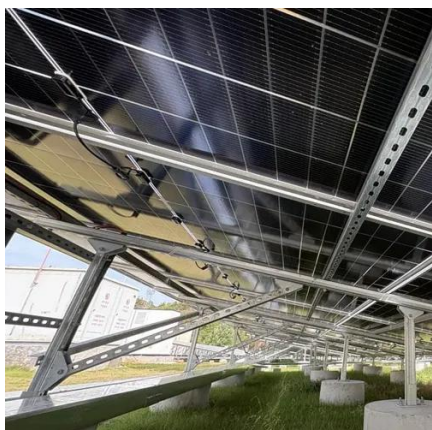
## Generator exhaust shaft dimensions

---



### Powerstack EPS2

PowerStack is a state-of-the-art twin-walled exhaust system designed to convey power generator exhaust. 22 internal diameters ranging from 4 inch (100mm) to 48 inch (1200mm). Outer jacket of ...



### [D-193\\_DuraStack\\_Spec\\_Generator Exhaust\\_06-09-17.docx](#)

Each DIS section shall be made of two steel cylinders separated by 2 inch of high temperature fiber insulation. The published clearance of 1 inch to combustibles shall be the result of UL/ULC standard. ...

### [Diesel Generator Exhaust System Design Guide - ...](#)

Design safe, quiet exhaust systems for diesel generators. Control noise, back-pressure, and heat with proper sizing, routing, and silencer selection.



### Powerstack EPS2

PowerStack is a state-of-the-art twin-walled exhaust system designed to convey ...



### Industrial Generator Set Accessories

Use the illustrations on the following pages to select the available silencer type and exhaust system configuration best suited for your application. Consult with your authorized distributor/dealer for ...

### [Generator Exhaust Venting Systems , Schebler Chimney Systems](#)

Our factory-fabricated generator exhaust systems typically come with one to four inches of insulation, reducing building cooling loads and mechanical room temperatures. Our systems can also be ...



### Generator Exhaust Systems

Generator exhaust systems need to be properly designed to ensure correct engine performance and safe operation. System design has become more complex with the desire to keep emissions low, ...

### Section 15575



The inner diameter of the exhaust system shall be verified by the manufacturer's computations. The computations used shall be technically sound, follow ASHRAE calculation methods and shall ...



### Spec Sheet: Model IPS generator exhaust

The prefabricated exhaust system shall be installed according to the manufacturer's installation instructions, clearances to combustibles, factory submittal drawing, and shall conform to all ...



### GENERIC GENERATOR INSTALLATION MANUAL

The exhaust back pressure of the generator when measured at full load must not exceed the manufacturer's recommendations. The size of exhaust pipe, number and type of ends and fittings ...



### [Generator Exhaust Systems -- Airside Industries](#)

During the initial exhaust system design, our engineers evaluate gas flow and maximum back pressure specifications from your generator manufacturer to determine the correct exhaust pipe sizing.





## Contact Us

---

For catalog requests, pricing, or partnerships, please visit:

<https://www.iwap.com.pl>

Phone: +34 919 456 782

Email: [info@iwap.com.pl](mailto:info@iwap.com.pl)

Scan the QR code to access our WhatsApp.

