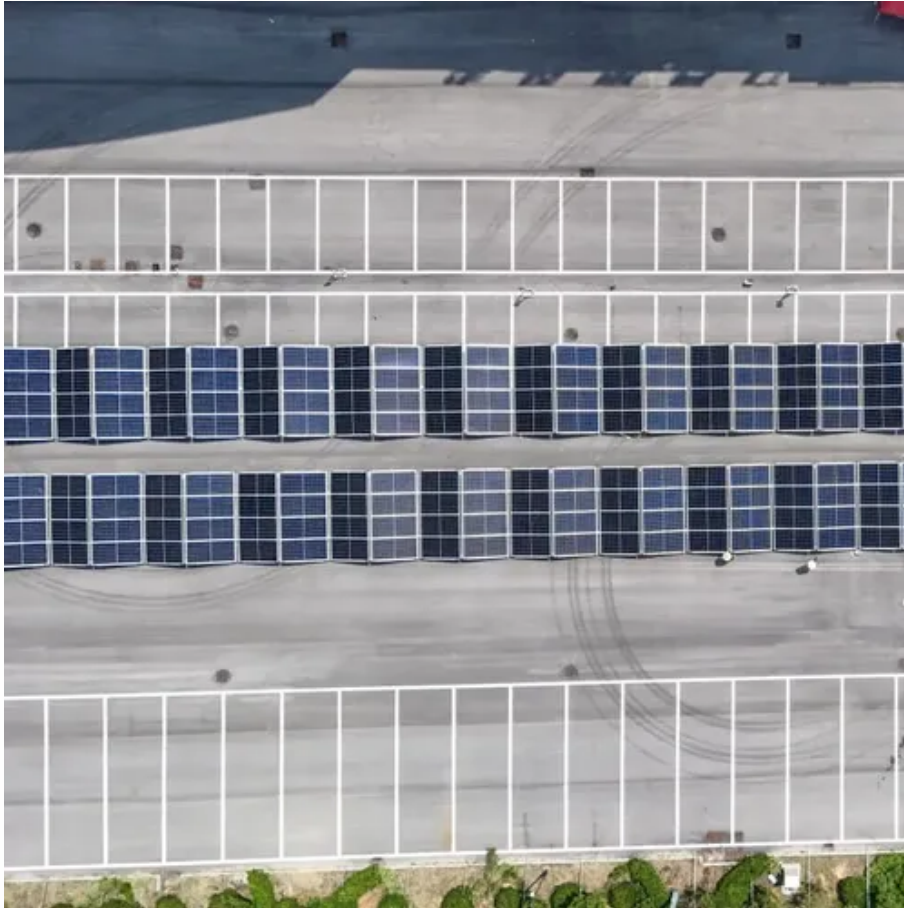




# Harare solar-powered communication cabinet inverter is connected to the grid





## Harare solar-powered communication cabinet inverter is connected to



### [The difference between grid connected cabinets and AC](#)

Grid connected cabinet, also known as inverter cabinet, is a key equipment for converting direct current generated by solar panels into alternating current. It mainly includes inverters, distribution protection, ...

### [Solar container communication station inverter grid ...](#)

Solar container communication station inverter grid-connected control board What is a grid-connected microgrid & a photovoltaic inverter? Grid-connected microgrids, wind energy systems, and ...



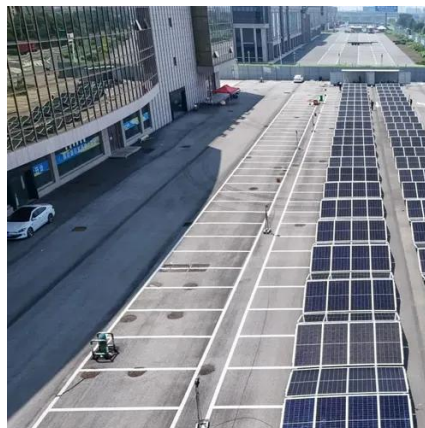
### [HARARE ISLAND ENERGY STORAGE POWER STATION](#)

Wind power communication equipment base station energy storage cabinet Base station energy cabinet: a highly integrated and intelligent hybrid power system that combines multi-input power modules ...



### [Power Line Communication in Solar Applications](#)

Another option to distinguish is communication from solar panels towards the inverters and the communication towards the grid. Communication between an inverter and MLPE is used for ...



### [Public solar container communication station inverter grid ...](#)



The integrated containerized photovoltaic inverter station centralizes the key equipment required for grid-connected solar power systems -- including AC/DC distribution, inverters, ...

### **Where are the inverters container communication connected to the grid ...**

Grid-connected PV inverters have traditionally been thought as active power sources with an emphasis on maximizing power extraction from the PV modules. While maximizing power transfer remains a ...



### [Grid-connected Photovoltaic Inverter and Battery System for ...](#)

Discover how a grid-connected photovoltaic inverter and battery system enhances telecom cabinet efficiency, reduces costs, and supports eco-friendly operations.



### [Overview of grid cabinet-key equipment connecting renewable ...](#)

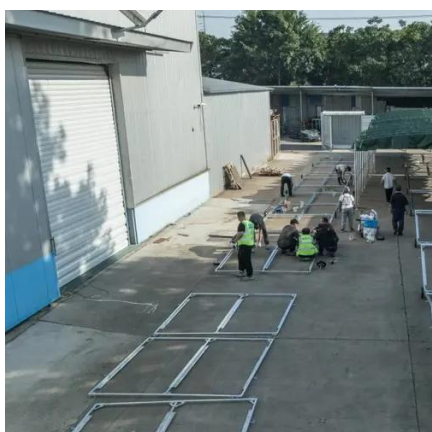


The grid-connected cabinet is a device used in the power system to connect power generation equipment (such as solar power generation, wind power generation or other types of generators) to ...



### [HLBWG Photovoltaic Grid-Connected Cabinet](#)

HLBWG Photovoltaic Grid-Connected Cabinet It can be used in solar photovoltaic power generation systems, and can also be used to convert, distribute and control electrical energy between ...



### [What communication green base station does Harare use](#)

We specialize in photovoltaic projects, solar products, solar industry solutions, photovoltaic inverters, energy storage systems, lithium batteries, residential off-grid power generation, industrial solar ...





## Contact Us

---

For catalog requests, pricing, or partnerships, please visit:

<https://www.iwap.com.pl>

Phone: +34 919 456 782

Email: [info@iwap.com.pl](mailto:info@iwap.com.pl)

Scan the QR code to access our WhatsApp.

