



# Heishan Positive Energy solar Panel Size





## Overview

---

The standard residential solar photovoltaic panel size you'll see most often is based on a 60-cell configuration, typically measuring about 67 inches long by 40 inches wide. This size offers the best balance between power output, handling ease, and fitting standard roof dimensions. Example: 5kW solar system is comprised of 50 100-watt solar panels. Alright, your roof square footage is 1000 sq ft. Can you put a 5kW solar system on your roof?

For that, you will need to know what size is a typical 100-watt solar panel, right?

To bridge that gap of very useful knowledge needed. What is a mobile solar PV container?

High-efficiency Mobile Solar PV Container with foldable solar panels, advanced lithium battery storage (100-500kWh) and smart energy management. Fast deployment in all climates. What is HJ. Panel "Size" vs Physical Dimensions: The most critical distinction for homeowners is that solar panel "size" refers to electrical output (measured in watts), not physical measurements. A 400W panel has the same physical footprint whether it produces 350W or 450W - the difference lies in cell. Using a solar panel size chart can help you choose the best types of solar panels for your home or application.



## Heishan Positive Energy solar Panel Size



### [Solar Panels Size & Weight \(Including Commercial Dimensions\)](#)

Individual PV solar cells are thin slices of silicon that typically measure 6 inches long by 6 inches wide. Multiple solar cells are assembled together to form a rectangular shaped panel. The ...

### [The Ultimate Guide to Solar Panel Size, Weight & Wattage \(2025\)](#)

Find the exact solar panel size & weight in our 2025 guide. Our complete chart compares models by ft/cm and lbs/kg to help you plan your installation.



### [Solar Panel Dimensions and Sizes: Complete Guide](#)

There are three main sizes of solar panels to know: 60-cell, 72-cell, and 96-cell. For commercial and residential solar panels, the 60-cell and 72-cell solar panels size are most commonly used as the 96 ...



## HEISHAN PHOTOVOLTAIC ENERGY STORAGE

...

What is a mobile solar PV container? High-efficiency Mobile Solar PV Container with foldable solar panels, advanced lithium battery storage (100-500kWh) and smart energy management. Ideal ...



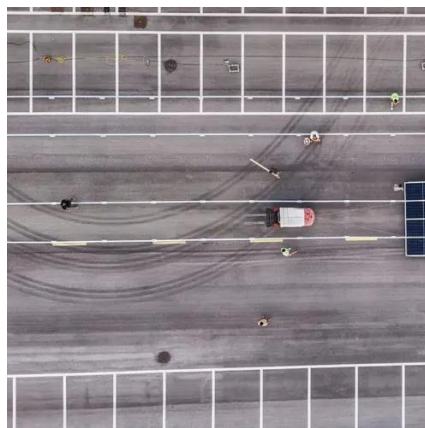
### [standard solar photovoltaic panel sizes explained](#)

Both panels have the same standard solar panel sizes, yet Panel B delivers 75 watts more power. For a homeowner with limited roof space, choosing a smaller, higher-efficiency panel is ...



### [Solar Panel Size & Dimensions Guide 2025 . Complete Specs](#)

In this comprehensive guide, you'll learn everything you need to know about solar panel sizing, from standard dimensions to weight considerations, helping you determine the perfect solar ...



### **HEISHAN PHOTOVOLTAIC ENERGY STORAGE PRODUCTION ENTERPRISE , EQACC SOLAR**

What is a mobile solar PV container? High-efficiency Mobile Solar PV Container with foldable solar panels, advanced lithium battery storage (100-500kWh) and smart energy management. Ideal for ...



### [Solar Panel Sizes, Dimensions & Wattage for Businesses , GSE](#)



Solar panel size refers to the power output (typically ranging between 450W and 600W per panel for commercial-grade modules) while solar panel dimensions refer to the physical height and ...



### [Solar Panel Size and Weight: How Big Are Solar Panels?](#)

Residential solar panels consist of around 60 solar cells and are roughly 5.5 feet long and 3 feet wide. Solar panels usually weigh about 40 to 50 pounds. Commercial solar panels are generally ...



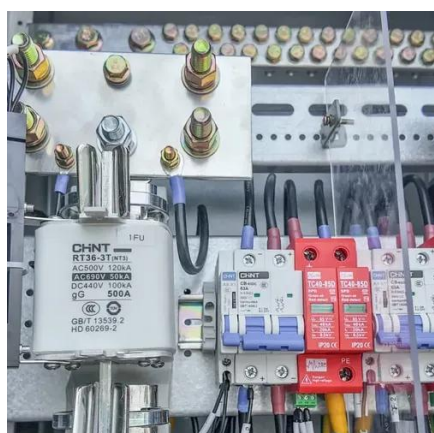
### [Solar Panel Size and Wattage Chart: Standard Sizes & Uses for Each](#)

Using a solar panel size chart can help you choose the best types of solar panels for your home or application. Because the size of a standard solar panel can vary, a chart that outlines the ...



### [Standard Solar Panel Sizes And Wattages \(100W-500W Dimensions\)](#)

The goal here is to get to the average solar panel size by wattage. You can find typical dimensions of 100W, 150W, 170W, 200W, 200W, 220W, 300W, 350W, 400W, and 500W solar panels summarized ...





## Contact Us

---

For catalog requests, pricing, or partnerships, please visit:

<https://www.iwap.com.pl>

Phone: +34 919 456 782

Email: [info@iwap.com.pl](mailto:info@iwap.com.pl)

Scan the QR code to access our WhatsApp.

