



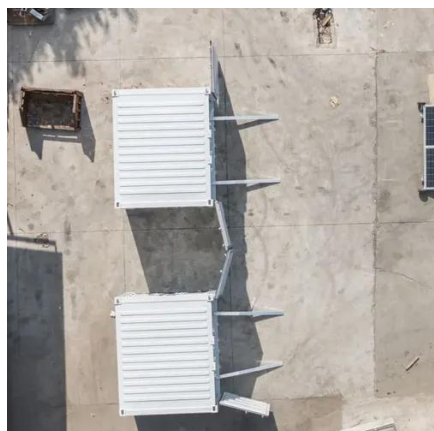
# How big a battery should I use with an inverter





## How big a battery should I use with an inverter

---



### [How to Size and Pair a Battery with Your Inverter in 2025: Advanced](#)

Learn how to size and pair a battery with your solar inverter in 2025. Discover key ratios, examples, and Growatt solutions for optimal solar + storage system design.

### [Determining the Solar and Inverter Size Needed to Charge a Battery](#)

This guide will walk you through everything you need to know to calculate the optimal size of your solar and inverter setup to charge batteries effectively and safely.



### [Calculate Battery Size For Any Size Inverter \(Using Our Calculator\)](#)

So I have made it easy for you, use the calculator below to calculate the battery size for 200 watt, 300 watt, 500 watt, 1000 watt, 2000 watt, 3000 watt, 5000-watt inverter



### [1000W Inverter: How Many Batteries Do You Really ...](#)

To safely run a 1000W inverter on a 12-volt system, you'll need four 12V 100Ah lead-acid batteries connected in parallel.



### [How to Calculate Solar Panel, Battery, and Inverter Size](#)

By accurately calculating your energy needs, desired backup time, and considering factors like system efficiency and future expansion, you can determine the appropriate sizes for your ...



### [Inverter Sizing: Can Your Inverter Be Too Big For Your Battery Bank](#)

For a balanced system, the inverter size should ideally be within 20% of the battery bank capacity. This ensures efficient operation and allows for fluctuations in power demand.



### [Sizing Your Solar Inverter for Optimal Battery Runtime](#)

Choosing the right size inverter is not just about meeting your power demands; it is a critical decision that directly impacts how long your batteries will last during a power outage. An ...



[Calculate Battery Size for Inverter Calculator](#)



By inputting critical parameters such as power consumption, inverter efficiency, and desired usage time, this calculator provides a precise battery size recommendation tailored to your ...



### [Which Battery Capacity Is Best for Inverter](#)

The best battery capacity for your inverter depends on your power needs, but 150Ah to 200Ah is ideal for most homes. Bigger isn't always better--efficiency matters. Many assume a larger ...

### [Can an Inverter Be Too Big for Your Battery System?](#)

A 30% buffer between inverter demand and battery output is ideal. Lithium batteries forgive minor mismatches, but lead-acid systems require strict adherence to C-rates."





## Contact Us

---

For catalog requests, pricing, or partnerships, please visit:

<https://www.iwap.com.pl>

Phone: +34 919 456 782

Email: [info@iwap.com.pl](mailto:info@iwap.com.pl)

Scan the QR code to access our WhatsApp.

