



How big a solar panel should a 48ah lithium iron phosphate battery be used with





Overview

Here's a chart about what size solar panel you need to charge different capacity 48v lead-acid & Lithium (LiFePO4) batteries in 6 peak sun hours using an MPPT charge controller. A Solar Panel and Battery Sizing Calculator is an invaluable tool designed to help you determine the optimal size of solar panels and batteries required to meet your energy needs. By inputting specific details about your energy consumption, this calculator provides tailored insights into the solar. In this article, we'll explain the step-by-step process to calculate solar panel requirements for 12V, 24V, and 48V batteries. You need around 800-1000 watts of solar panels to charge most of the 48V lead-acid batteries from 50% depth of discharge. This article offers a comprehensive, step-by-step overview of the intricate process of calculating energy consumption, sizing solar PV system capacity, selecting appropriately-sized inverters, and configuring Lithium Iron Phosphate (LFP) battery storage tailored for residential settings. A correctly sized battery ensures you have reliable power when you need it, extends the lifespan of your investment, and maximizes the return from your solar. I found out the hard way that sizing solar panels for a 48V lithium battery isn't just about doing a quick calculation—it can determine whether your off-grid cabin stays lit, your EV charger keeps working, or your network gear stays online without interruption. During my first winter in the Pacific.



How big a solar panel should a 48ah lithium iron phosphate battery b

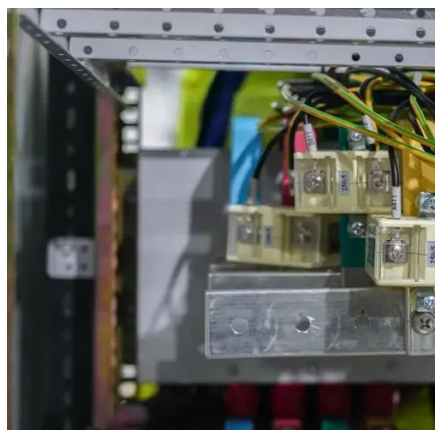


[Myth vs. Reality: Sizing Lithium Iron Phosphate Batteries](#)

Properly sizing a Lithium Iron Phosphate (LiFePO4) battery bank is the foundation of a reliable off-grid power system. Get it right, and you'll enjoy consistent, dependable energy. Get it ...

Solar Panel Size Calculator

This article offers a comprehensive, step-by-step overview of the intricate process of calculating energy consumption, sizing solar PV system capacity, selecting appropriately-sized ...



[Solar Panel and Battery Sizing Calculator](#)

With 300-watt panels, the calculator suggests 20 panels for California and 16 for Texas for optimal efficiency.

[How Many Solar Panels Do I Need to Charge a 48V Lithium Battery?](#)

For my 48V 100Ah battery (4,800Wh), I set a goal of recharging fully in 4-6 hours. Start by dividing total watt-hours by your desired charge time:
 $4,800\text{Wh} \div 4\text{h} = 1,200\text{W}$. Then, account for ...



[Solar Panel Size Calculator: What Size Panel Do I Need?](#)

Many battery manufacturers recommend a maximum charge current of for lithium iron phosphate batteries with this capacity. To maximize your battery's lifespan, consider using a smaller ...



[How Many Solar Panels to Charge a Battery? \(12V, 24V & 48V ...\)](#)

In this article, we'll explain the step-by-step process to calculate solar panel requirements for 12V, 24V, and 48V batteries. We'll also compare lithium vs lead-acid batteries, and even show ...



Solar Panel Size Calculator and Charts

To maximize your battery's lifespan, consider using a smaller solar panel or a bigger battery. Or increase your desired charge time. To determine how many solar panels you need with ...



[How Many Solar Panels Do I Need to Charge a 48V Lithium Battery?](#)



From cabin blackouts to RV trips, I've seen 5-8 panels (250-300W) charge a 48V 100-200Ah lithium battery in 4-6 hours. Match array to capacity, chemistry, and sun, optimize with ...

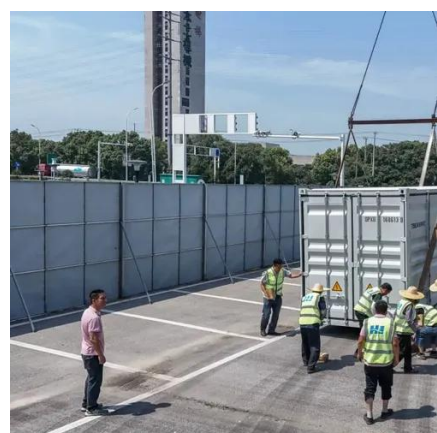


[The Ultimate LiFePO4 Battery Sizing Calculator Guide](#)

Size your LiFePO4 battery perfectly with our calculator guide. Follow simple steps to calculate your solar energy storage needs, avoid costly errors, and ensure reliable power.

Solar Panel Size Calculator

Use our solar panel size calculator to find out the ideal solar panel size to charge your lead acid or lithium battery of any capacity and voltage. For example, 50ah, 100ah, 200ah, 120ah.



The Complete Sizing Guide for Residential LFP Batteries, PV Panels, ...

This article offers a comprehensive, step-by-step overview of the intricate process of calculating energy consumption, sizing solar PV system capacity, selecting appropriately-sized ...



Contact Us

For catalog requests, pricing, or partnerships, please visit:

<https://www.iwap.com.pl>

Phone: +34 919 456 782

Email: info@iwap.com.pl

Scan the QR code to access our WhatsApp.

