



# How big an inverter can drive a 3kW water pump





## Overview

---

The inverter's 150% overload capacity (for 1 minute) handles startup surges, ensuring smooth operation even with temporary high demand. Pipe length, water pressure, and pump type matter. A 3KW INVERTER from SHUYI typically suits water pumps with power ratings of 2. For more about our products, please [click here](#).  
Why Not Larger Pumps?

Pumps above 3kW demand more. To determine the appropriate size of the inverter needed to run a pump, it is necessary to calculate the power requirements of the pump. The power requirements can be calculated using the following formula: Power (Watts) = Voltage (Volts) x Current (Amps) First, you need to identify the voltage and. How to determine what size inverter I need?

Before we go any further, we highly recommend that you choose a pure sine wave inverter. This type of inverter delivers high-quality electricity, similar to your utility company. But understand that not all 2000w inverters are equal.



## How big an inverter can drive a 3kW water pump



### [The Only Inverter Size Chart You'll Ever Need](#)

How to Determine What Size Inverter I Need? What Are The Two Types of Power loads? Inverter Size Chart What Will A 300W Inverter Run? What Will A 500W Inverter Run? What Will A 700W Inverter Run? What Will A 1000W Inverter Run? What Will A 1500W Inverter Run? What Will A 2000W Inverter Run? What Will A 3000W Inverter Run? We have summarized the appliances that inverters from 300W to 3000W can run depending on their rated maximum power. Note to our readers: Use the above formula to determine how many appliances each inverter size can run simultaneously. See more on [climatebiz The Inverter Store](#)

### **What Size Inverter Do I Need? - Inverter Size Calculator**

Finding the proper inverter size for your needs is as simple as adding together the necessary wattages of the items that you're looking to power.

### [3KW INVERTER: What Size Water Pump Does It Suit?](#)

A 3KW INVERTER from SHUYI typically suits water pumps with power ratings of 2.2kW to 3kW. This range ensures the inverter handles the pump's load without overworking, balancing efficiency and ...



### [The Only Inverter Size Chart You'll Ever Need](#)

We have created a comprehensive inverter size chart to help you select the correct inverter to power your appliances.



### What Size Inverter Do I Need To Run A Pump?

Inverters come in various sizes, typically measured in watts (W) or kilowatts (kW). The size of the inverter should be equal to or slightly larger than the calculated power requirements of the ...



### Water Pump and Inverter Compatibility: The Ultimate Guide

Centrifugal Pumps: Centrifugal pumps generally **\*\*can run on inverters\*\***. However, it is crucial to ensure that the inverter's output frequency and voltage are compatible with the pump's ...

### How big an inverter can drive a 3kw water pump

In selecting a 3-phase 380V solar water pump inverter, ranging from 0.37kW to 250kW, it's critical to understand both the key considerations for choosing an inverter and the diverse application ...



### What inverter size would run this well pump



I have a 1/3Hp jet pump that pumps from a tank in my cabin, the MPP2724 inverter (2700 Watts, 24 volt) runs this jet pump effortlessly with a 304Ah battery and 150A BMS, on 150A DC ...

### [Choosing the Right Size and Capacity in Water Pump Inverters](#)

Capacity, measured in gallons per minute (GPM), represents the volume of water the inverter can deliver. This is especially crucial for high-flow applications, such as irrigation systems or firefighting ...

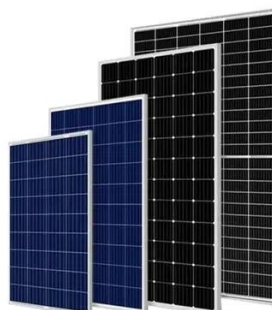


### **3KW Solar Powered Water Pump System**

A standard 3KW solar water pumping system typically includes a 4.2-4.5kWp photovoltaic array, a 3KW solar pump inverter, and a matching 3KW water pump. The system operates by converting solar ...

### [Inverter power for water pumps: the ultimate guide to keep your home](#)

With the increasing popularity of alternative energy sources, the question of whether a water pump can run on an inverter has become a topic of interest. This blog post aims to provide a ...



### **What Size Inverter Do I Need?**



Finding the proper inverter size for your needs is as simple as adding together the necessary wattages of the items that you're looking to power.



## Contact Us

---

For catalog requests, pricing, or partnerships, please visit:

<https://www.iwap.com.pl>

Phone: +34 919 456 782

Email: [info@iwap.com.pl](mailto:info@iwap.com.pl)

Scan the QR code to access our WhatsApp.

