



How big an inverter can the original battery be used for





How big an inverter can the original battery be used for



[Calculate Battery Size For Any Size Inverter \(Using Our Calculator\)](#)

Learn how to size and pair a battery with your solar inverter in 2025. Discover key ratios, examples, and Growatt solutions for optimal solar + storage system design.

[Can a Battery Be Too Big for an Inverter?](#)

Yes, a battery can be too big for an inverter, leading to inefficiencies and potential safety issues. Oversized batteries may not discharge correctly or could exceed the inverter's capacity, ...



- 50KW/100KWH
- HIGHER POWER OUTPUT IN OFF-GRID MODE
- CONVENIENT OPERATION & MAINTENANCE
- PRE-WIRED

[Which Battery Capacity Is Best for Inverter](#)

The best battery capacity for your inverter depends on your power needs, but 150Ah to 200Ah is ideal for most homes. Bigger isn't always better--efficiency matters.



- PV / DG Application
- APP Intelligent Control
- Multi-Unit Parallel Expansion
- 98.8% Max. Efficiency

[Can an Inverter Be Too Big for Your Battery System?](#)

Lithium-ion batteries tolerate higher discharge rates (up to 1C) compared to lead-acid (0.5C). A 100Ah LiFePO4 battery can safely power a 1200W inverter, while lead-acid should cap at 600W.



[How Much Battery Capacity Do You Need With a 12V Inverter?](#)

Quick answer: Add up your daily watt-hours, double the figure for wiggle room, divide by 12 to get amp-hours, then double again if you plan to use only half the battery. That's the minimum ...

[What Size Inverter Do I Need? A Comprehensive Guide to Inverter ...](#)

Proper inverter sizing affects energy efficiency, system longevity, and whether your inverter works well with your battery setup. This inverter sizing guide will take you through the ...



[Battery and Inverter Sizing Guide 2025: How to Match Solar Storage](#)

Learn how to size and pair a battery with your solar inverter in 2025. Discover key ratios, examples, and Growatt solutions for optimal solar + storage system design.



[Inverter Sizing: Can Your Inverter Be Too Big for Your Battery Bank?](#)



Using an inverter that is too large for the battery bank can lead to inefficient performance and reduced battery lifespan. An oversized inverter may draw more power than the battery bank can ...

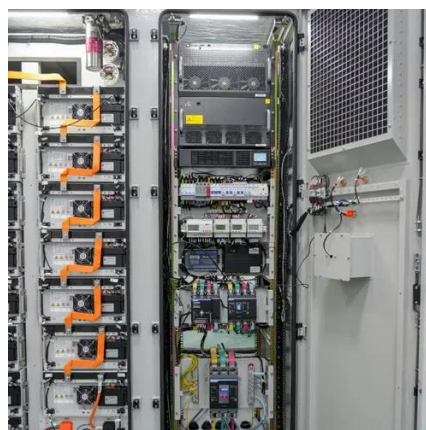


[What Inverter Size is Best for a 100Ah Battery?](#)

Rule of Thumb: A 12V 100Ah battery can reasonably power an inverter up to 1000W-1200W for short periods. For continuous loads, 500W-800W is more efficient and battery-friendly.

[Calculate Battery Size for Inverter Calculator](#)

By inputting critical parameters such as power consumption, inverter efficiency, and desired usage time, this calculator provides a precise battery size recommendation tailored to your ...



[Calculate Battery Size For Any Size Inverter \(Using Our Calculator\)](#)

So I have made it easy for you, use the calculator below to calculate the battery size for 200 watt, 300 watt, 500 watt, 1000 watt, 2000 watt, 3000 watt, 5000-watt inverter



Contact Us

For catalog requests, pricing, or partnerships, please visit:

<https://www.iwap.com.pl>

Phone: +34 919 456 782

Email: info@iwap.com.pl

Scan the QR code to access our WhatsApp.

