



How big an inverter should I use for a 7 4v lithium battery





How big an inverter should I use for a 7 4v lithium battery



[Can an Inverter Be Too Big for Your Battery System?](#)

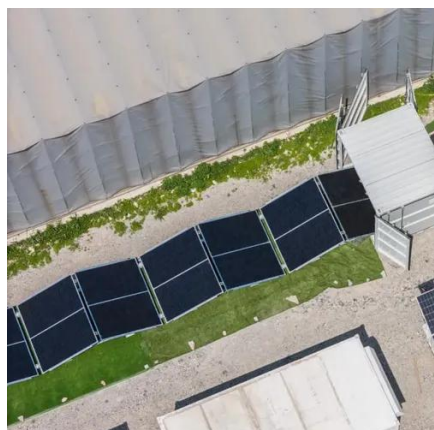
Why Battery Chemistry Matters in Inverter Sizing
Lithium-ion batteries tolerate higher discharge rates (up to 1C) compared to lead-acid (0.5C). A 100Ah LiFePO4 battery can safely power a 1200W

...

[The Ultimate Guide to Matching Your Lithium Battery and Inverter](#)

For that 2000W inverter, you need a battery setup that can happily deliver over 157A without breaking a sweat. That gives you two main options: a single, high-output battery pack like our

...



[How to Choose the Right Inverter Size for Lithium Batteries: A ...](#)

Selecting the perfect inverter size for lithium batteries is like picking the right engine for your car--it needs enough power to handle your needs without wasting energy. This guide breaks down critical ...

[Determining the Solar and Inverter Size Needed to Charge a Battery](#)

These systems use the grid as backup, so your solar and inverter Size doesn't need to cover 100% of daily demand--but should still handle peak production efficiently. Off-Grid Systems All ...



ESS



[How to Choose the Right Inverter for a Lithium Battery System](#)

Learn how to select the right inverter for lithium battery systems, covering LiFePO4 compatibility, sizing, safety, solar integration, and long-term performance use.

[The Only Inverter Size Chart You'll Ever Need](#)

We created a comprehensive inverter size chart to help you select the correct inverter to power your appliances. The need for an inverter size chart first became apparent when researching ...



[Calculate Battery Size For Any Size Inverter \(Using Our Calculator\)](#)

So I have made it easy for you, use the calculator below to calculate the battery size for 200 watt, 300 watt, 500 watt, 1000 watt, 2000 watt, 3000 watt, 5000-watt inverter

[How to Select the Right Inverter for Your Lithium Battery Pack](#)



A definitive inverter selection guide for lithium battery systems. Learn the crucial differences between AC and DC coupling, key compatibility factors, and system design principles to ...



WORKING PRINCIPLE



[Battery and Inverter Sizing Guide 2025: How to Match Solar ...](#)

Learn how to size and pair a battery with your solar inverter in 2025. Discover key ratios, examples, and Growatt solutions for optimal solar + storage system design.

[How big an inverter should I use for a 7.4v lithium battery](#)

Bottom line, if you want to run large inverter loads above 1000w on a lithium battery, make sure you choose an lithium battery that is designed for larger inverters or a system that can be paralleled ...





Contact Us

For catalog requests, pricing, or partnerships, please visit:

<https://www.iwap.com.pl>

Phone: +34 919 456 782

Email: info@iwap.com.pl

Scan the QR code to access our WhatsApp.

