



How big is 1 kilowatt of solar energy





Overview

A 1kW solar panel system typically produces around 1,000 watts of DC direct current power. The standard dimensions for a residential solar panel are 66×40 inches for the panel, about 1. Many people ask how much it costs and what it can run., 3×370 W) is around 6–7 m² (including spacing). Whether you are a homeowner looking to reduce electricity bills or a business aiming to portray an eco-friendly image, understanding the dimensions and space.



How big is 1 kilowatt of solar energy

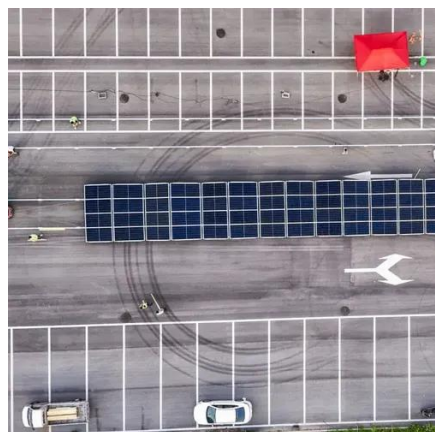


[kW vs kWh: The Beginner's Guide to Solar Sizing](#)

Understanding the difference between kilowatts (kW) and kilowatt-hours (kWh) forms the bedrock of choosing the right solar system for your energy independence goals. kW defines the ...

1kW Solar System: All You Need to Know

How Much Power Can a 1kW Solar System Generate? In most areas: A 1kW solar system can produce around 4 to 5 kWh a day. In a month, this adds up to about 120 to 150 kWh. Over a ...



[1kW Solar System: Price, Load Capacity, How Big, and More](#)

How Big is a 1 kW Solar System? Since each solar panel has a footprint of 17 square feet, and you will need at least 3 panels for a 1kW system, the total footprint of the system will be ...

[1kW Solar System Information - Facts & Figures](#)

Did you know that 1kW solar power systems can consist of a different number of panels depending on the size of the solar panels? Here are some common panel sizes which could make up a 1kW ...



1kW Solar Panel Size

Dimensions: Standard solar panels for residential and small commercial use typically measure around 1.6 meters in length and 1 meter in width. Installation Space: Each panel generally ...



[What Is A Kilowatt? \(And Answers to Other Solar Questions\)](#)

A kilowatt-hour (kWh) is a unit of energy that measures the total amount of electricity consumed. If you run an electric appliance rated at 1 kilowatt (1,000 watts) for 1 hour, it consumes 1 ...



[Solar Panel Dimensions \(Size\): 300W, 400W, 1 kW. How Big Is It?](#)

Lastly, a 1 kW solar panel system (3-4 panels, 350-400W each) measures ~6-7 m² (including spacing) and weighs approximately 60-80 kg. The wattage of a solar panel is usually indicated on the side of ...



[How Big Is A 1Kw Solar Panel? \[Updated: February 2026\]](#)



How Big Is A 1Kw Solar Panel? A 1kW solar panel typically requires up to 100 square feet of space and produces an estimated 150 watts of power.



[KW vs. KWh: Home Solar Systems Explained \(2026\) , ConsumerAffairs®](#)



Kilowatts are measurements of energy flow. A kilowatt is 1,000 watts. A kilowatt-hour is how much energy can be collected or used steadily for an hour. A 5-kW solar system, for instance,

Solar Panel Sizes and Wattage Explained

To calculate the required system size, multiply the number of panels by the output. For example, a 6.6 kW solar system typically consists of 20 panels each delivering 330W of power. Solar ...





Contact Us

For catalog requests, pricing, or partnerships, please visit:

<https://www.iwap.com.pl>

Phone: +34 919 456 782

Email: info@iwap.com.pl

Scan the QR code to access our WhatsApp.

