



How big is a typical solar power station





Overview

Most solar parks are developed at a scale of at least 1 MW p. As of 2018, the world's largest operating photovoltaic power stations surpassed 1 gigawatt. At the end of 2019, about 9,000 solar farms were larger than 4 MW AC (utility scale), with a combined capacity of over. There is no standardized chart that will tell you, for example, “A typical 300-watt solar panel is this long and this wide. Example: 5kW solar system is comprised of. A photovoltaic power station, also known as a solar park, solar farm, or solar power plant, is a large-scale grid-connected photovoltaic power system (PV system) designed for the supply of merchant power. These farms typically consist of thousands of solar panels, mounted on trackers or fixed frames, which convert sunlight into electrical energy. Solar power stations can have various capacities depending on several factors, including technology and location, 2.



How big is a typical solar power station



[Solar Panel Dimensions: Complete 300W, 400W, and 1kW Size Guide](#)

Generally speaking, a typical solar panel has a power output ranging from 250 to 400 watts, with an average size of about 40 square feet. The actual amount of power generated depends on the location of the panel, the ...

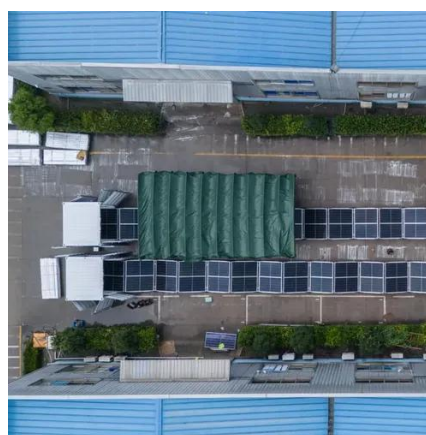


[Standard Solar Panel Sizes And Wattages \(100W-500W Dimensions\)](#)

You can find typical dimensions of 100W, 150W, 170W, 200W, 220W, 300W, 350W, 400W, and 500W solar panels summarized in the chart below. But, just to emphasize the problem, let's have a look at how the ...

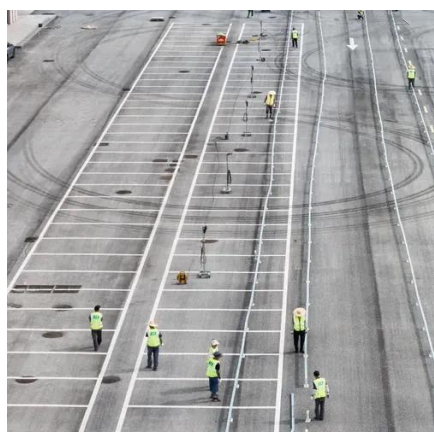
Most U.S. utility-scale solar photovoltaic power plants are 5 megawatts

Most of these power plants are relatively small and collectively account for 2.5% of utility-scale electric generating capacity and 1.7% of annual electricity generation, based on data through November 2018.



Power plants: average capacity?

But the average coal plant is 380MW with 50% utilization, while the average solar plant is 11MW with 20% load factor. So "replacing" 1 typical coal plant with 1 grid connection requires c100 solar plants with c100 grid ...



[What is the capacity of a typical solar power plant?](#)

Capacity: Residential solar installations typically range from 2 ...

[What is the capacity of a solar power station? . NenPower](#)

Solar installations can range from small, residential rooftops producing a few kilowatts to expansive utility-scale farms with capacities in the hundreds or even thousands of megawatts.



[What is the capacity of a typical solar power plant?](#)

Capacity: Residential solar installations typically range from 2 kilowatts (kW) to 10 kW, although larger systems are also possible for homes with higher electricity consumption.

[A Guide to Large Photovoltaic Powerplant Design](#)



Designing a photovoltaic power plant on a megawatt-scale is an endeavor that requires expert technical knowledge and ...



Photovoltaic power station

As of 2018, the world's largest operating photovoltaic power stations surpassed 1 gigawatt. At the end of 2019, about 9,000 solar farms were larger than 4 MW AC (utility scale), with a combined capacity of over 220 GW ...



[Sizing Up the Sun: Unpacking the Scale of a 1 MW Solar Farm](#)

In the context of solar energy, a 1 MW solar farm is capable of producing 1,000,000 watts of electricity. To put this into perspective, a typical residential solar panel system is around 5-10 kilowatts ...



Photovoltaic power station

OverviewHistorySiting and land useTechnologyThe business of developing solar parksEconomics and financeGeographySee also

A photovoltaic power station, also known as a solar park, solar farm, or solar power plant, is a large-scale grid-connected photovoltaic power system (PV system) designed for the supply of merchant power. They are different from most building-mounted and other decentralized solar power because they supply power at the utility level, rather than to a local user or users. Utility-





scale solar is sometimes used to describe this ty...

Power plants: average capacity?

But the average coal plant is 380MW with 50% utilization, while the ...



[Solar Panel Size & Dimensions Guide 2025](#), [Complete Specs](#)

In this comprehensive guide, you'll learn everything you need to know about solar panel sizing, from standard dimensions to weight considerations, helping you determine the perfect solar solution for your ...

[How to Size a Solar System \[Step-by-Step Guide\]](#)

When sizing a solar system, follow these steps to find out exactly what will cover your energy needs. If you'd just like a quick estimate without having to work through the math, feel free to use our solar calculator ...





Contact Us

For catalog requests, pricing, or partnerships, please visit:

<https://www.iwap.com.pl>

Phone: +34 919 456 782

Email: info@iwap.com.pl

Scan the QR code to access our WhatsApp.

