



How big is the 400-gauge solar panel





Overview

A standard 400 watt solar panel typically measures around 65 inches by 39 inches (approximately 1.65 meters by 1 meter) and has a thickness of about 1. As solar technology continues to advance, more people are considering solar panels as a viable energy source. Knowing the dimensions of a 400 watt panel helps. Knowing the size of a 400-watt solar panel can help you determine how many panels you might need for your energy goals, the space required for installation, and the potential return on investment. 5") aren't arbitrary - they represent the. The dimensions of 96-cell solar panels are as follows: 41. This form is a bit shorter but wider.



How big is the 400-gauge solar panel



[Exploring the Size of a 400 Watt Solar Panel](#)

Understanding the size of a 400 watt solar panel is essential for anyone considering solar energy solutions. With dimensions that typically measure around 65 inches by 39 inches, these ...

[Jinji Lake Pavilion , Bjarke Ingels Group](#)

Like a little sister to the Suzhou Museum of Contemporary Art, the Jinji Lake Pavilion seeks to reimagine the future architecture and landscape of the Lake District rooted in the rich heritage of Suzhou's ...



How Big Is A 400 Watt Solar Panel?

However, most 400-watt panels are typically around 6.5 feet (2 meters) in length and 3.3 feet (1 meter) in width. This translates to approximately 78 inches by 39 inches or 2,028 square ...



AARhus Residences , Bjarke Ingels Group

Alberte Danvig Aleksander Wadas Anna Wisborg
Ariel Joy Norback Wallner Brigitta Gulyás Claes
Robert Jansson Frederike Werner Ioana Fartadi
Scurtu Jesafa Templo Katarina Mácková Katerina

...



Careers , Bjarke Ingels Group

BIG has grown globally since 2005, with 60+ buildings in 10+ countries. Join our 700+ person team shaping the future of architecture and design challenges.



The Plus , Bjarke Ingels Group

Bjarke Ingels - Founder & Creative Director, BIG
From all four sides of the buildings, visitors and staff will be invited to hike around the facility and end their walk on the roof.



[Standard Solar Panel Sizes And Wattages \(100W-500W Dimensions\)](#)

It takes up 6.07 sq ft of area. If you have a 1000 sq ft roof, and you can use 75% of that roof area for solar panels, you can theoretically put 123 100-watt solar panels on a 1000 sq ft roof. A typical 300 ...



BIG , Bjarke Ingels Group



BIG has grown organically over the last two decades from a founder, to a family, to a force of 700. Our latest transformation is the BIG LEAP: Bjarke Ingels Group of Landscape, ...

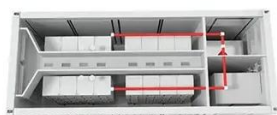


[Solar Panel Size & Dimensions Guide 2025 . Complete Specs](#)

In this comprehensive guide, you'll learn everything you need to know about solar panel sizing, from standard dimensions to weight considerations, helping you determine the perfect solar ...

[What Size is a 400 Watt Solar Panel? Myths and Facts](#)

While the general size of a 400 watt solar panel is around 65 inches by 39 inches, it's important to note that different manufacturers may produce panels with slightly varying dimensions.



How Big Is a 400 Watt Solar Panel?

Typically, a 400 Watt solar panel measures around 66-72 inches long and 39-41 inches wide, but variations exist based on the manufacturer, cell type, and panel efficiency.

People , Bjarke Ingels Group



Meet the team at Bjarke Ingels Group (BIG). Explore our partners, architects, and specialists shaping the future of architecture and design.

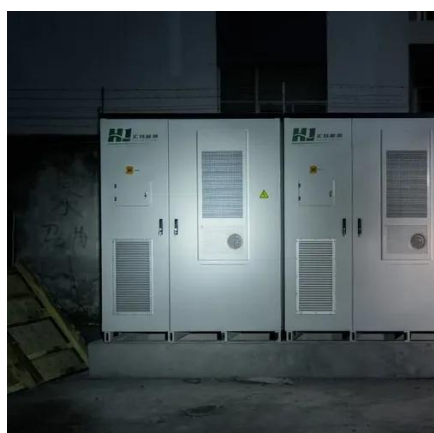


How Big Is a 400 Watt Solar Panel?

Modern 400W solar panels typically occupy a physical space that allows for efficient installation on standard rooftops. A common length for these high-output panels is approximately 65 ...

BIG HQ , Bjarke Ingels Group

At the foot of BIG HQ, BIG's Landscape team has transformed a former parking area into a 1,500 m2 public park and promenade, inspired by the sandy beaches and the coastal forests of Denmark.



CityWave , Bjarke Ingels Group

Designed by BIG-Bjarke Ingels Group with Atelier Verticale, CityWave is constructed on the last two plots of the CityLife masterplan, a major new business district in a prestigious area of Milan, within ...

[Hamburg State Opera , Bjarke Ingels Group](#)



Shaped by the movement of the water, the surrounding park is designed by BIG Landscape and manages storm surges through sloping terraces, vegetated dunes, and wetland gardens that slow ...



Google Bay View , Bjarke Ingels Group

We hope Bay View will provide a quantum leap in the evolution of the workplace, elevate the benchmark for sustainable design, and inspire the next generations of users and visitors to the building." Leon ...



How Big Is a 400W Solar Panel?

Understanding the dimensions of a 400w solar panel is crucial for planning your solar installation, whether for residential or commercial use. Typically, a 400w solar panel measures ...



[How Big is a 400W Solar Panel? Key Facts and Insights](#)

A typical 400-watt solar panel measures approximately 1.7 meters by 1 meter (or about 67 inches by 39 inches). However, dimensions can differ slightly based on the manufacturer and the ...

[400-Watt Solar Panels: Cost, Size, Power Output & Best Uses ...](#)



How Big is a 400-Watt Solar Panel? A 400-watt solar panel is generally larger than smaller solar panels such as 100 watt or 300 watt panels, but not as large as high-output options like ...





Contact Us

For catalog requests, pricing, or partnerships, please visit:

<https://www.iwap.com.pl>

Phone: +34 919 456 782

Email: info@iwap.com.pl

Scan the QR code to access our WhatsApp.

