



How big is the maximum square meter of photovoltaic panel



GEL Battery



Lithium Battery



Container storage system



Power Battery





Overview

Solar cell dimensions are typically around 189 x 100 x 3. Can you put a 5kW solar system on your roof?

For that, you will need to know what size is a typical 100-watt solar panel, right?

To bridge that gap of very useful knowledge needed, we have compared and averaged the sizes of 100-watt to 500-watt solar. Roof Load Capacity is Rarely a Limiting Factor: Solar panels add only 3-4 pounds per square foot to roof load, well within the 20+ pound capacity of most residential roofs. The real constraints are typically usable roof space after accounting for required 3-foot setbacks and obstruction clearances. Solar panel sizes and wattage range from 250W to 450W, taking up 1.6 to 2 square metres per panel. 9 inches and a width range of 39 to 51. Lower wattage panels tend to be on the smaller end of these ranges, while higher wattage panels tend to be larger.



How big is the maximum square meter of photovoltaic panel



[How many square meters is a photovoltaic solar panel?](#)

Larger, commercial solar panels can extend up to 2.5 square meters, facilitating greater power production. This size enables them to cater to more expansive spaces, maximizing energy ...

[How Many Square Meters Are Photovoltaic Panels? A...](#)

Ever wondered how much roof space you'd need to become your own power plant? Let's break down the spatial requirements of solar panels. A standard 320W photovoltaic panel measures about ...



[We Analyzed 100 Solar Panels: Dimensions, Efficiency, & Load](#)

Solar panel width generally varies between 39.0 inches and 51.3 inches. A common width range of 39.1 to 41.5 inches encompasses many models across different wattages. Wider panels, such as those ...

[Average dimensions of photovoltaic panels](#)

Generally speaking, the length of residential solar panels is between 65 inches (1.65 meters) and 79 inches (2 meters). Their width is between 39 and 41 inches (around 1 meter). The ...



[Standard Solar Panel Sizes And Wattages \(100W-500W Dimensions\)](#)

If you want to calculate how many solar panels you can put on your roof, you will obviously need to know the size of a solar panel. Example: 5kW solar system is comprised of 50 100-watt solar panels. ...



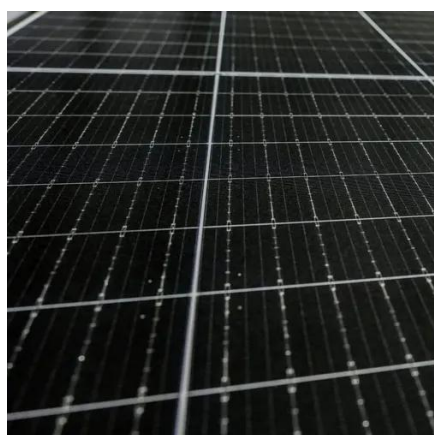
[Guide to Solar Panel Sizes & Dimensions \(October 2025\)](#)

Solar panel sizes and wattage range from 250W to 450W, taking up 1.6 to 2 square metres per panel. One of the most important things to consider when getting solar panels for your ...



[standard solar photovoltaic panel sizes explained](#)

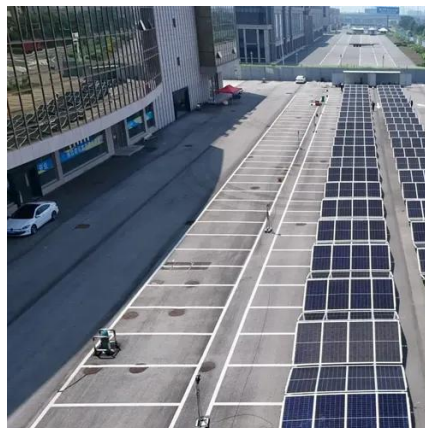
Residential solar photovoltaic panel sizes typically adhere to a standard 60-cell format, resulting in dimensions around 65 inches by 39 inches (or approximately 1.65 meters by 1 meter).



[Solar Panel Size & Dimensions Guide 2025 . Complete Specs](#)



In this comprehensive guide, you'll learn everything you need to know about solar panel sizing, from standard dimensions to weight considerations, helping you determine the perfect solar ...



[How many square meters are photovoltaic solar panels?](#)

A typical solar panel measures about 1.6 to 1.7 square meters, depending on the manufacturer and efficiency design. Most panels are rectangular, which allows for efficient ...

[How Many Square Meters Is One Solar Panel?](#)

This article will delve into the average size of a solar panel in square meters. We will explore the standard dimensions, the typical energy output associated with these sizes, and how ...





Contact Us

For catalog requests, pricing, or partnerships, please visit:

<https://www.iwap.com.pl>

Phone: +34 919 456 782

Email: info@iwap.com.pl

Scan the QR code to access our WhatsApp.

