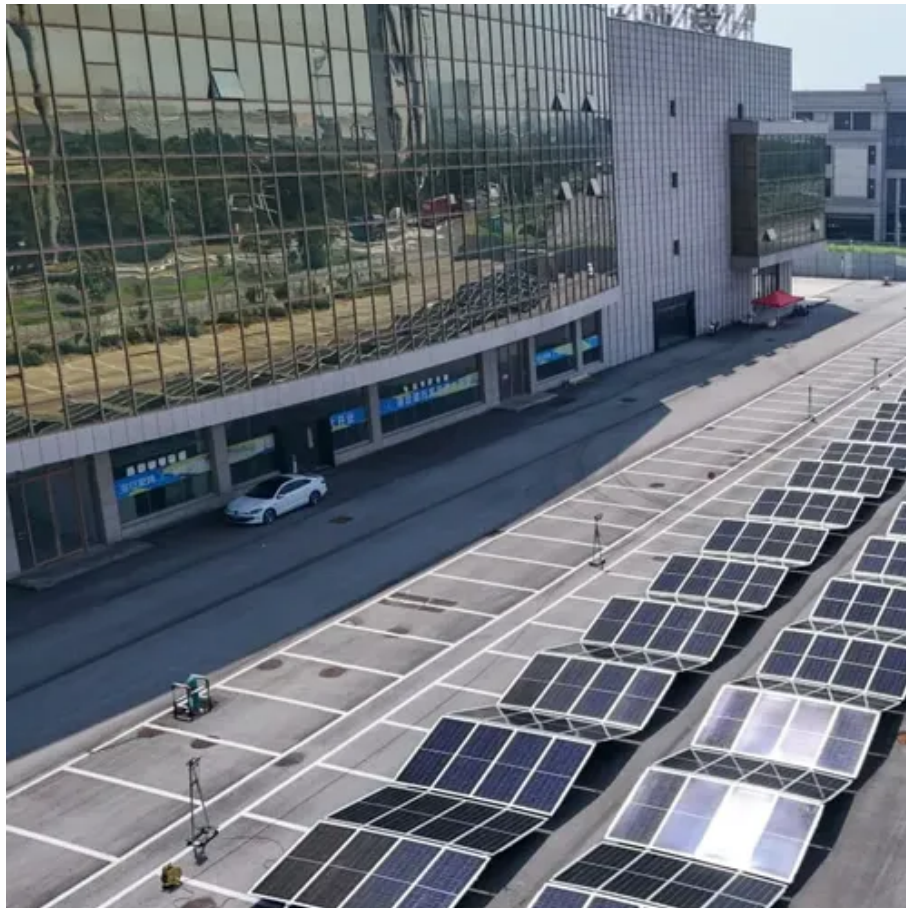




How high is the height difference requirement for photovoltaic panels





Overview

Solar panels should be mounted at a height of 3.25" from the roof's surface to ensure optimal performance. This measurement takes into account the seam of the SSMR, typically 1.5" to 3" in height, the mounting hardware, adding approximately 3/4" and the module frame. Solar, or photovoltaic (PV) panels as they're referred to in NFPA 1, Fire Code, are becoming more and more common on one- and two-family dwelling and townhouse roofs. Since the 2016 edition of NFPA 1, access pathways have been required on roofs to facilitate fire service access as well as egress. Why Height Matters in Solar Panel Installation When installing rooftop photovoltaic panels, the elevation is a critical factor. Discover how proper height optimization impacts solar efficiency, safety, and regulatory compliance. Proper panel spacing not only enhances energy efficiency but also extends the system's lifespan. Height difference (H) = Panel width * Tilt (sin of tilted degrees) Step 2: Module row spacing With height difference and solar angle, we can find the module row spacing using the following formula:



How high is the height difference requirement for photovoltaic panels



Residential Solar Panel Requirements

When the panels cover 33 percent or less of the plan view roof area, the panels must be set back from the ridge at least 18 in. (457 mm). When the panels cover more than 33 percent of the ...

How High Off The Roof Should Solar Panels Be Mounted?

Solar panels should be mounted at a height of 3.75' to 5.25' from the roof's surface to ensure optimal performance. This measurement takes into account the seam of the SSMR, typically 1.5' to 3' in ...



Standard Specifications for Photovoltaic Panel Height from Ground

What are the design and engineering requirements for solar panels? These requirements vary depending on the type of installation, such as rooftop or ground-mounted systems, as well as the ...



Height Standards for Rooftop Solar Panels: Key Factors and Best

Discover how proper height optimization impacts solar efficiency, safety, and regulatory compliance. Learn why 18-36 inches has become the industry's golden range for rooftop PV installations.



[What Is the Average Height of Ground Mounted Solar Panels?](#)

Choosing the appropriate height for ground-mounted solar panels is not just about meeting installation requirements; it significantly impacts the efficiency and ease of maintaining the ...



[How high is the height difference requirement for photovoltaic panels](#)

Whenever the height of the ground mounted solar panel exceeds the height permitted for a fence wall in LAMC Section 12.22.C.20(f), LADBS will evaluate the installation to ensure the



[Photovoltaic Panel Height Standards: What You Need to Know in 2025](#)

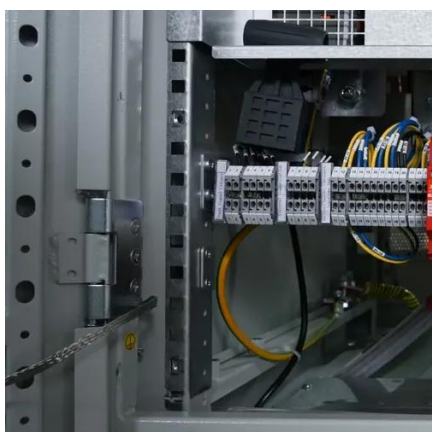
The answer lies in photovoltaic panel height standards - the unsung hero of solar efficiency. Recent data from the International Renewable Energy Agency shows properly elevated PV systems yield 18% ...



[Determining Module Inter-Row Spacing](#), [Greentech Renewables](#)



The first step in calculating the inter-row spacing for your modules is to calculate the height difference from the back of the module to the surface. To do that, follow this calculation below:



[How to Calculate the Minimum Distance Between PV Panels?](#)

Height Restrictions: Local building codes specify that the height of solar panels must not exceed a certain range, especially for rooftop installations, generally not more than 30 to 50 ...

[Solar Panel Height Above Roof: Optimal Clearance and Installation](#)

Several variables guide the ideal solar panel height above roof: roof type, local climate, wind exposure, desired tilt angle, and maintenance needs. Each project must balance these factors ...





Contact Us

For catalog requests, pricing, or partnerships, please visit:

<https://www.iwap.com.pl>

Phone: +34 919 456 782

Email: info@iwap.com.pl

Scan the QR code to access our WhatsApp.

