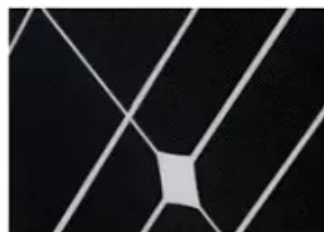
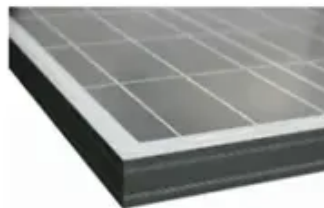




How long is the wind blade for power generation





Overview

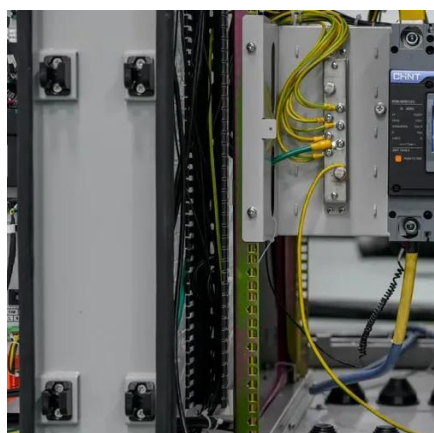
But how long are the blades on a wind turbine in actual numbers?

Modern onshore wind turbines typically have blades ranging between 40 and 70 meters in length. Offshore turbines, often built at a grander scale, can exceed 80 meters per blade. Wind energy has undergone a massive transformation, represented by the colossal blades propelling turbines into the future of renewable power. Unicomposite, an ISO-certified pultrusion specialist, supplies the spar caps and stiffeners that let those mega-structures stay light, stiff, and reliable — giving. How long are modern wind turbine blades, and what incredible advancements are pushing their sizes to astonishing new heights?

Discover the future of wind power! Modern wind turbine blades can amaze you with their size, ranging from 84 meters for onshore models to over 107 meters for offshore.



How long is the wind blade for power generation



[How Long Are the Blades on a Wind Turbine: Mind-Blowing Facts](#)

Modern onshore wind turbines typically have blades ranging between 40 and 70 meters in length. Offshore turbines, often built at a grander scale, can exceed 80 meters per blade. To put that in ...

[How Long Are Wind Turbine Blades? Factors & Size Explained](#)

The length of wind turbine blades varies considerably, depending on whether they are intended for onshore or offshore installations and their power capacity. Modern onshore wind ...



How Long Is a Wind Turbine Blade? The Shocking Size of Modern Wind Power!

The growing size of wind turbine blades considerably boosts their power generation capabilities. With an average rotor diameter of 438 feet and blades averaging 210 feet long, the ...

[How Long Are Wind Turbine Blades: Size Specifications Guide](#)

Did you know that the average length of a modern wind turbine blade is over 170 feet? As the demand for renewable energy grows, understanding wind turbine blade size becomes crucial for ...



[How Long Are Wind Turbine Blades? Sizes, Materials & Trends](#)

What is the practical maximum length for onshore wind turbine blades today? Most OEMs cap onshore blades around 85 m because of transport limits, though segmented solutions can ...



[How Long are Wind Turbine Blades: The Quick Guide to Their ...](#)

Wind energy has undergone a massive transformation, represented by the colossal blades propelling turbines into the future of renewable power. From modest beginnings with blades a ...



[Wind Turbine Blade Size: How Big Are They and Why?](#)

According to The United States Department of Energy, most modern land-based wind turbines have blades of over 170 feet (52 meters). This means that their total rotor diameter is longer ...



[How Long Are Wind Turbine Blades? Explore Impressive Dimensions](#)



Did you know that the longest wind turbine blades now measure an astonishing 115.5 meters, nearly as tall as the Statue of Liberty? This impressive dimension is not just a feat of ...

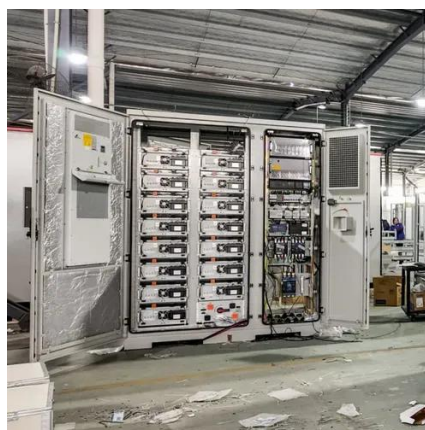


How Long Is a Wind Turbine Blade?

The length of a wind turbine blade varies widely, but modern utility-scale wind turbine blades commonly range from 40 to over 100 meters (131 to over 328 feet).

How Long are Wind Turbine Blades?

Forty years ago, wind turbine blades were only 26 feet long and made of fiberglass and resin [3]. Today, blades can be 351 feet, longer than the height of the Statue of Liberty, and produce ...



How Long are Wind Turbine Blades?

The length of wind turbine blades varies considerably, depending on whether they are intended for onshore or offshore installations and their power capacity. Modern onshore wind ...



Contact Us

For catalog requests, pricing, or partnerships, please visit:

<https://www.iwap.com.pl>

Phone: +34 919 456 782

Email: info@iwap.com.pl

Scan the QR code to access our WhatsApp.

